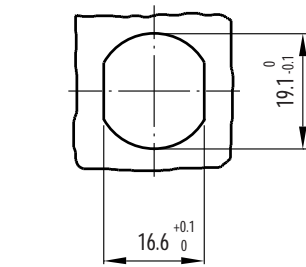
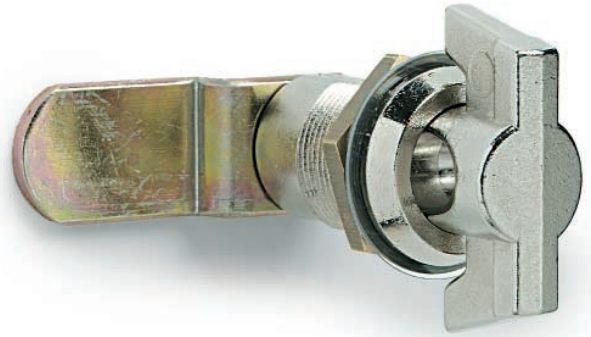


CM/L

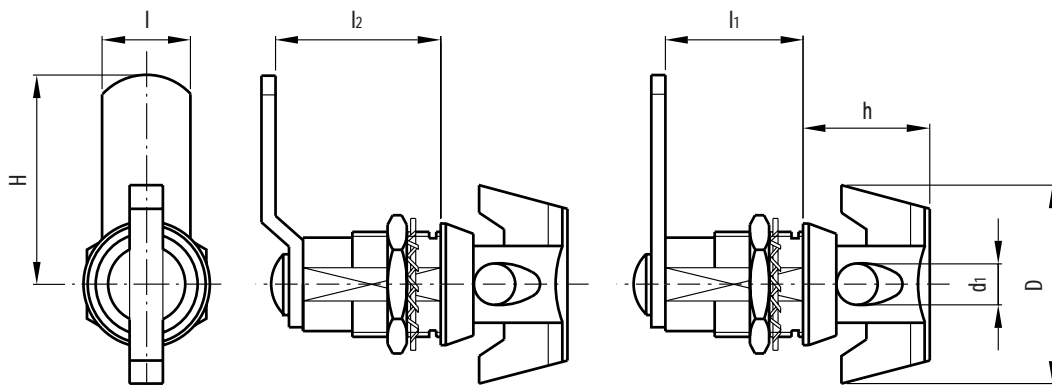
Latches with knob and padlock

- Nickel-plated zinc alloy **body**.
- Nickel-plated zinc alloy **wing nut** with machined hole to insert a padlock with 5 to 7 mm Ø hook.
- Assembly with **brass nut** M19x1, galvanised steel spring washer and PVC washer.
- **90° right rotation**.
- Galvanised and tropicalised steel **closing lever**, 2.5 mm thickness. Levers with other dimensions on request and for sufficient quantities.

Galvanised steel threaded extension for lever advanced positioning on request.



Drilling template



Standard elements		Main dimensions							Weight
Code	Description	D	h	l	l ₁	l ₂	d ₁	H	grams
421221	CM/L-32	36	23	16	25	-	7.5	32	74
421223	CM/L-36-30	36	23	16	25	30	7.5	35.5	76