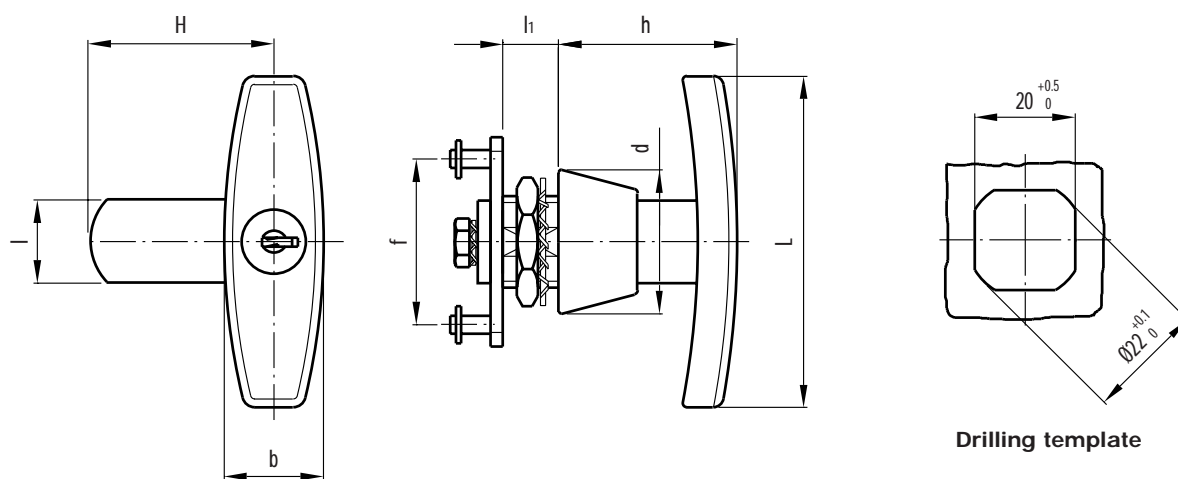




## T handle with lock

- Glossy chrome-plated zinc alloy **handle and stator**.
- Brass-plated zinc alloy **rotor** and stainless steel **front plate**.
- Assembly with brass nut M22x1.5 and galvanised steel spring washer.
- **90° right rotation**.
- Two nickel-plated brass keys, removable in two positions at 180°.
- Galvanised and tropicalised steel **closing levers** (flat and two-point), 3 mm thickness.  
Lever with other dimensions on request and for sufficient quantities.
- **Version CS/M** lock with different numbers (400 different combinations).
- **Version CSU/M** lock with same numbering.

Galvanised steel threaded extension for lever advanced positioning on request and for sufficient quantities.



Standard elements		Main dimensions								Weight
Code	Description	L	b	h	d	l	l <sub>1</sub>	H	f	grams
421511	CS/M-50	80	24	43	35	20	13.5	50	42	240
421513	CSU/M-50									