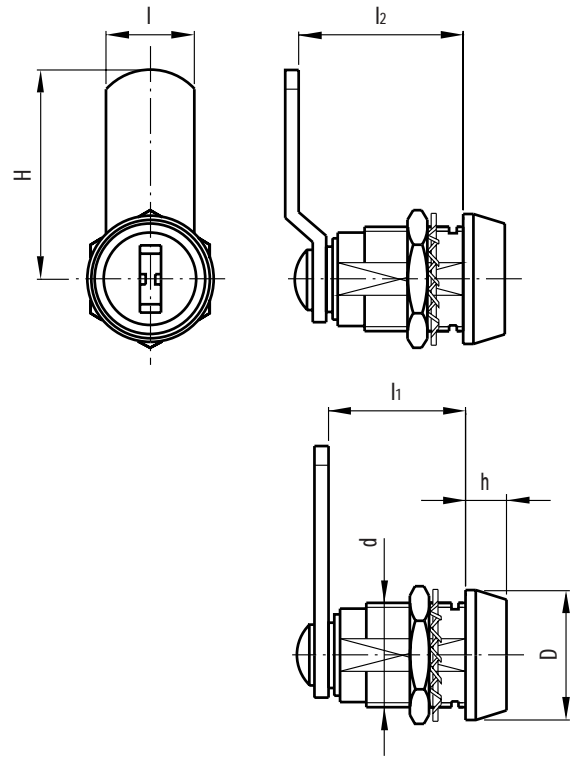
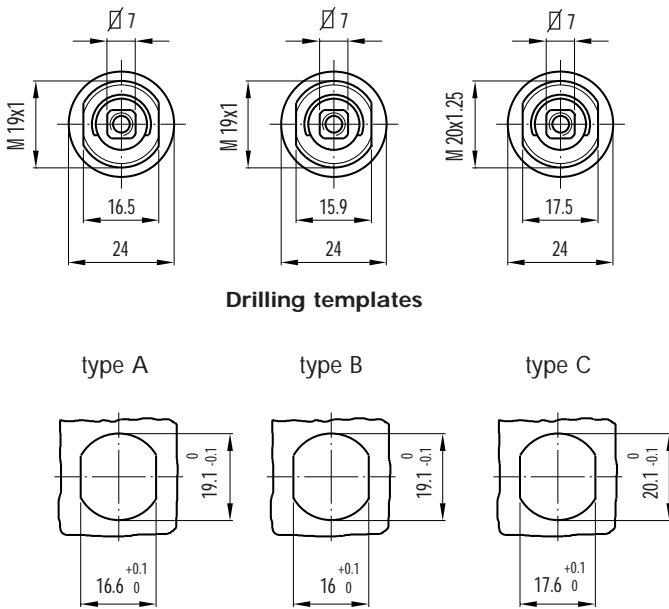


## Latches with safety lock

- **Lock** with opposing blades and double-track key with internal profile, 15.660 different codes.
- Green passivated zinc alloy **rotor**, drill-proof hardened steel plate and stainless steel front plate. Glossy chrome-plated zinc alloy **stator**.
- Assembly with **brass nut** M19x1 (type A and B), M20x1.25 (type C) and galvanised steel spring washer.
- **Degree of protection IP 65** (see page 385).
- **180° rotation.**
- Two, nickel-plated brass **reversible keys**, removable in two positions at 180°.
- Galvanised and tropicalised steel **closing lever**, 2.5 mm thickness. Levers with other dimensions on request and for sufficient quantities.
- **Version CX.** lock with different numbers (15.660 different combinations).
- **Version CXU.** lock with same numbering.

Galvanised steel threaded extension for lever advanced positioning on request.



Standard elements		Main dimensions							Weight
Code	Description	D	d	h	l	h1	l2	H	grams
421611	CX/A-32	24	M19x1	7	16	22.5	-	32	60
421613	CXU/A-32						-	32	60
421615	CX/A-36-28						27.5	35.5	62
421617	CXU/A-36-28						27.5	35.5	62
421619	CX/B-32	24	M19x1	7	16	22.5	-	32	60
421621	CXU/B-32						-	32	60
421623	CX/B-36-28						27.5	35.5	62
421625	CXU/B-36-28						27.5	35.5	62
421627	CX/C-32	24	M20x1.25	7	16	22.5	-	32	61
421629	CXU/C-32						-	32	61
421631	CX/C-36-28						27.5	35.5	63
421633	CXU/C-36-28						27.5	35.5	63