

## Adjustable handles with threaded stud

- **Glass-fibre reinforced polyamide based (PA) technopolymer lever body.**

Resistant to solvents, oils, greases and other chemical agents.

- **Grey-black** standard colour with matte finish.

- Comfortable technopolymer **push button**, in one of the Ergostyle colours, with glossy finish.

- Technopolymer **tightening element** with knurling on the projecting part to make initial tightening easier. Number of teeth  $z$  indicated in the table.

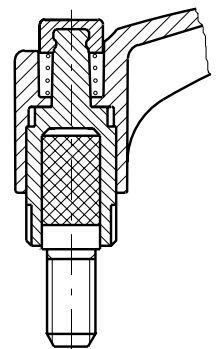
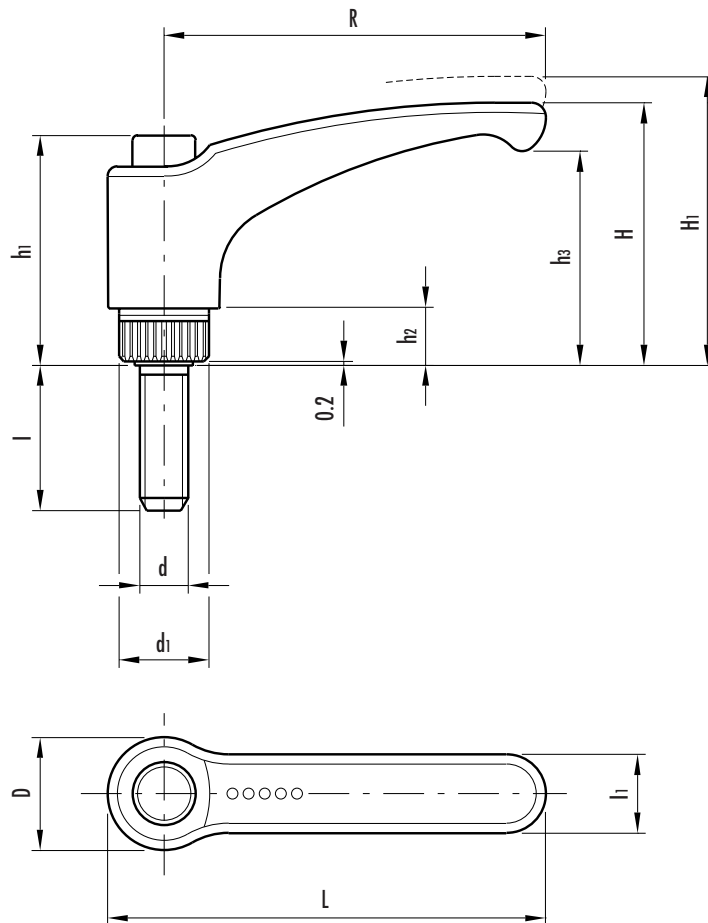
- Zinc-plated steel threaded **stud** with chamfered end according to UNI 947: ISO 4753 table.

- Technopolymer **axial retaining pin**. AISI 302 stainless steel return spring.

Particularly suitable when lever turning angle is limited owing to lack of space.

To adjust during clamping, lift the lever to disengage clamping device toothing and bring it back to start position. By releasing the lever, the return spring automatically engages toothing once again.

The slightly arched shape of the handle with the ergonomic terminal enlargement gives the operator a comfortable and safe grip, while the thumb rests naturally on the push button.



## Stress resistance

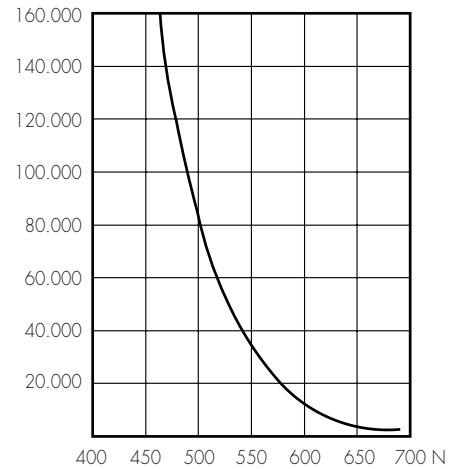
Adjustable handles are normally used for repetitive and sometimes very high-frequency clamping operations.

Therefore, the stress resistance (i.e. the resistance to repeated tightening cycles) of the handle unit is particularly important and, in particular, the strength of the toothed element through which the tightening force is applied to the handle is transmitted to the threaded element (insert or stud).

In fact, the results of numerous laboratory tests, performed with a special instrument that simulates the most severe use conditions, have shown that the adjustable handle ERX.78 can withstand more than 100.000 tightening cycles without yielding, under the action of an applied force of 490 N.

Thanks to the materials used and the rational dimensions of the various elements comprising the ELESA adjustable handles, the stress resistance values are much higher than the real stress that is generated under normal working conditions.

NUMBER OF TIGHTENINGS



When ordering please complete the code and the description of the element needed specifying the colour of the push button (see the available colours shown above the dimensions table).

Sample order:  
234101 - C2 ERX.44 p-M5x10 - C2  
Adjustable handle with orange push button

C 1: RAL 7021 C 2: RAL 2004 C 3: RAL 7035 C 4: RAL 1021 C 5: RAL 5024 C 6: RAL 3000



Standard elements		Main dimensions										Threaded stud		Teeth no.	Weight											
Code ▲	Description ▲	R	L	D	H	H1	h1	h2	h3	d1	l1	d 6g	l	z	grams											
234101 -	ERX.44 p-M5x10 -	44	52	15.5	32.5	36	29.5	6	25	12	11	M5	10	18	11											
234106 -	ERX.44 p-M5x16 -											M5	16		12											
234111 -	ERX.44 p-M5x20 -											M5	20		13											
234121 -	ERX.44 p-M6x16 -											M6	16		14											
234126 -	ERX.44 p-M6x20 -											M6	20		15											
234131 -	ERX.44 p-M6x25 -											M6	25		16											
234136 -	ERX.44 p-M6x30 -											M6	30		17											
234146 -	ERX.44 p-M6x40 -	M6	40	19																						
234306 -	ERX.63 p-M6x16 -	63	73.5	19	43	47	37.5	8	34.5	15	13.5	M6	16	20	29											
234311 -	ERX.63 p-M6x20 -											M6	20		30											
234321 -	ERX.63 p-M6x30 -											M6	30		32											
234336 -	ERX.63 p-M8x20 -											M8	20		32											
234341 -	ERX.63 p-M8x25 -											M8	25		34											
234346 -	ERX.63 p-M8x30 -											M8	30		36											
234351 -	ERX.63 p-M8x35 -											M8	35		38											
234356 -	ERX.63 p-M8x40 -											M8	40		40											
234366 -	ERX.63 p-M8x50 -											M8	50		43											
234371 -	ERX.63 p-M8x60 -											M8	60		46											
234516 -	ERX.78 p-M10x20 -	78	90.5	23	54	58	47	12	44	19	16	M10	20	24	58											
234521 -	ERX.78 p-M10x25 -											M10	25		61											
234526 -	ERX.78 p-M10x30 -											M10	30		64											
234536 -	ERX.78 p-M10x40 -											M10	40		70											
234541 -	ERX.78 p-M10x50 -											M10	50		76											
234546 -	ERX.78 p-M10x60 -											M10	60		82											
234566 -	ERX.78 p-M12x25 -											M12	25		71											
234571 -	ERX.78 p-M12x30 -											M12	30		74											
234576 -	ERX.78 p-M12x40 -											M12	40		76											
234586 -	ERX.78 p-M12x50 -											M12	50		78											
234591 -	ERX.78 p-M12x60 -											M12	60		81											
234726 -	ERX.95 p-M12x30 -											95	109		26.5	64.5	69	54.5	13	53	21.5	18	M12	30	26	86
234741 -	ERX.95 p-M12x50 -																						M12	50		90
234751 -	ERX.95 p-M12x70 -	M12	70	94																						
234901 -	ERX.95 p-M16x30 -	M16	30	104																						
234911 -	ERX.95 p-M16x50 -	M16	50	110																						
234921 -	ERX.95 p-M16x70 -	M16	70	116																						

▲ Complete the code and the description of the standard item needed specifying the index of the colour of the push button.