

## Adjustable handles

- **Glass-fibre reinforced polyamide based (PA) technopolymer lever body.**

Resistant to solvents, oils, greases and other chemical agents.

- **Grey-black** standard colour with matte finish.

- **Zinc alloy toothed element** to couple to the clamping element.

- **Black oxide steel clamping element**, with threaded hole and tothing to couple to the lever body. Number of teeth  $z$  shown in the table.

- Black oxide steel **set screw** and retaining spring.

**The internal teeth of the handle are formed in a zinc alloy element moulded into the technopolymer lever.** The engagement of these teeth with the central insert is completely metallic offering great strength and allowing easy modifications in order to create special versions.

Particularly suitable when the lever turning angle is limited owing to lack of space.

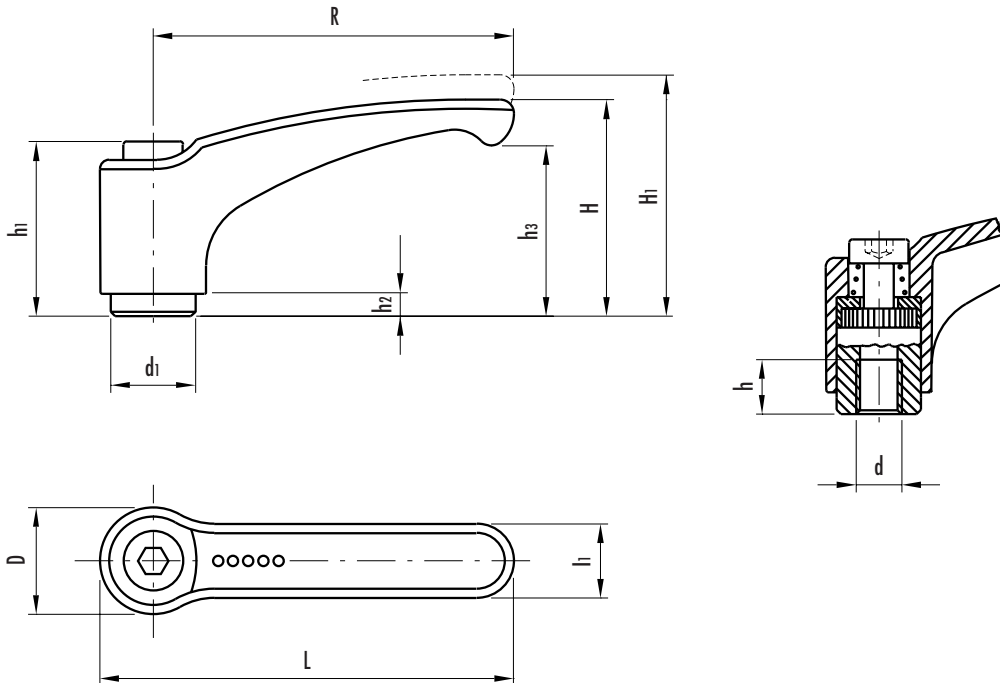
To adjust during clamping, lift the lever to disengage clamping device tothing and bring it back to start position. By releasing the lever, the return spring automatically engages tothing once again.

The slightly arched shape of the handle with the ergonomic terminal enlargement gives the operator a comfortable and safe grip, while the thumb rests naturally on the push button.

Sample order:

237104 ERZ.44 A-M6

Adjustable handle with insert



Standard elements		Main dimensions										Mounting hole		Teeth no.	Weight	
Code	Description	R	L	D	H	H1	h1	h2	h3	d1	l1	d 6H	h	z	grams	
237102	ERZ.44 A-M4	44	52	15.5	30.5	34	24.5	3.5	22.5	10	11	M4	8	18	16	
237103	ERZ.44 A-M5											M5	8			16
237104	ERZ.44 A-M6											M6	8			15
237134	ERZ.63 A-M6	63	73.5	19	38.5	42	31	3.5	30	13.5	13.5	M6	10	24	36	
237135	ERZ.63 A-M8											M8	10		34	
237155	ERZ.78 A-M8	78	90.5	23	46.5	50.5	36	3.5	36.5	16	16	M8	14	26	55	
237156	ERZ.78 A-M10											M10	14		61	
237175	ERZ.95 A-M10	95	109	26.5	56.5	61.5	43	5	45	19	18	M10	17	28	93	
237176	ERZ.95 A-M12											M12	17		86	