

## Adjustable handles with threaded stud

- **Glass-fibre reinforced polyamide based (PA) technopolymer lever body.**

Resistant to solvents, oils, greases and other chemical agents.

- **Grey-black** standard colour with matte finish.

- **Zinc alloy toothed element** to couple to the clamping element.

- **Black oxide steel clamping element**, with stud and toothing to couple to the lever body. Stud with chamfered end according to UNI 947: ISO 4753 table. Number of teeth  $z$  shown in the table.

- Black oxide steel **set screw** and retaining spring.

**The internal teeth of the handle are formed in a zinc alloy element moulded into the technopolymer lever.**

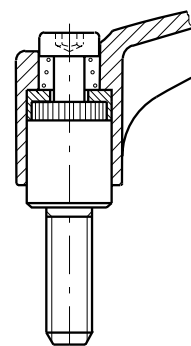
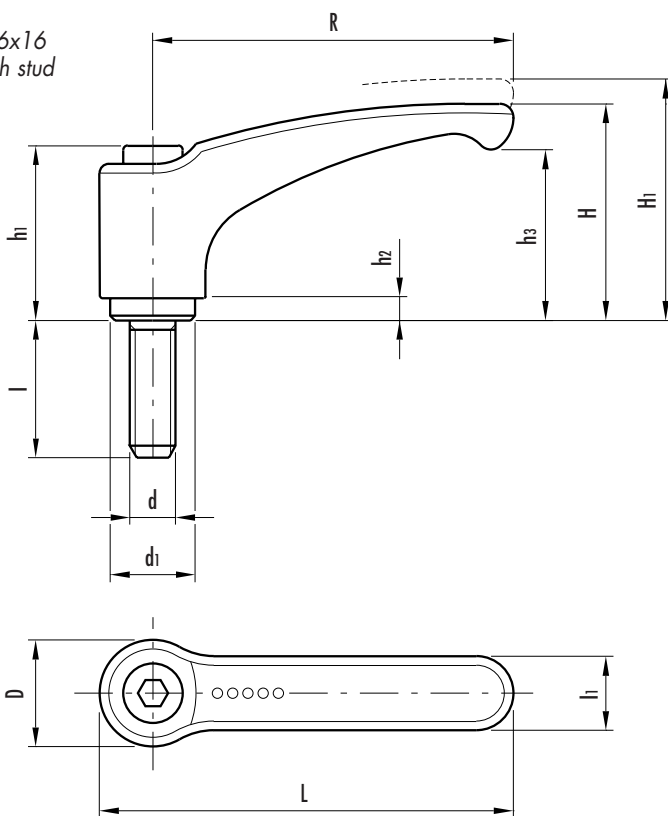
The engagement of these teeth with the central insert is completely metallic offering great strength and allowing easy modifications in order to create special versions.



Sample order:

238155 ERZ.44 p-M6x16

Adjustable handle with stud



Standard elements		Main dimensions										Threaded stud		Teeth no.	Weight
Code	Description	R	L	D	H	H <sub>1</sub>	h <sub>1</sub>	h <sub>2</sub>	h <sub>3</sub>	d <sub>1</sub>	l <sub>1</sub>	d 6g	l	z	grams
238103	ERZ.44 p-M4x12											M4	12		15
238105	ERZ.44 p-M4x16											M4	16		16
238107	ERZ.44 p-M4x20											M4	20		17
238109	ERZ.44 p-M4x25											M4	25		18
238111	ERZ.44 p-M4x32											M4	32		19
238133	ERZ.44 p-M5x12											M5	12		17
238135	ERZ.44 p-M5x16											M5	16		18
238137	ERZ.44 p-M5x20											M5	20		19
238139	ERZ.44 p-M5x25											M5	25		20
238141	ERZ.44 p-M5x32	44	52	15.5	30.5	34	24.5	3.5	22.5	10	11	M5	32	18	21
238143	ERZ.44 p-M5x40											M5	40		22
238145	ERZ.44 p-M5x50											M5	50		23
238153	ERZ.44 p-M6x12											M6	12		19
238155	ERZ.44 p-M6x16											M6	16		20
238157	ERZ.44 p-M6x20											M6	20		21
238159	ERZ.44 p-M6x25											M6	25		22
238161	ERZ.44 p-M6x32											M6	32		23
238163	ERZ.44 p-M6x40											M6	40		24
238165	ERZ.44 p-M6x50											M6	50		25

Standard elements		Main dimensions										Threaded stud		Teeth no.	Weight
Code	Description	R	L	D	H	H1	h1	h2	h3	d1	l1	d 6g	l	z	grams
238333	ERZ.63 p-M6x12											M6	12		47
238335	ERZ.63 p-M6x16											M6	16		49
238337	ERZ.63 p-M6x20											M6	20		55
238339	ERZ.63 p-M6x25											M6	25		57
238341	ERZ.63 p-M6x32											M6	32		61
238343	ERZ.63 p-M6x40											M6	40		68
238345	ERZ.63 p-M6x50											M6	50		77
238347	ERZ.63 p-M6x63											M6	63		39
238351	ERZ.63 p-M8x12											M8	12		40
238353	ERZ.63 p-M8x16											M8	16		41
238355	ERZ.63 p-M8x20											M8	20		42
238357	ERZ.63 p-M8x25	63	73.5	19	38.5	42	31	3.5	30	13.5	13.5	M8	25	24	43
238359	ERZ.63 p-M8x32											M8	32		44
238361	ERZ.63 p-M8x40											M8	40		46
238363	ERZ.63 p-M8x50											M8	50		48
238365	ERZ.63 p-M8x63											M8	63		41
238373	ERZ.63 p-M10x20											M10	20		42
238375	ERZ.63 p-M10x25											M10	25		43
238377	ERZ.63 p-M10x32											M10	32		45
238379	ERZ.63 p-M10x40											M10	40		47
238381	ERZ.63 p-M10x50											M10	50		52
238383	ERZ.63 p-M10x63											M10	63		53
238385	ERZ.63 p-M10x80											M10	80		57
238533	ERZ.78 p-M8x16											M8	16		70
238535	ERZ.78 p-M8x20											M8	20		73
238537	ERZ.78 p-M8x25											M8	25		76
238539	ERZ.78 p-M8x32											M8	32		81
238541	ERZ.78 p-M8x40											M8	40		86
238543	ERZ.78 p-M8x50											M8	50		88
238545	ERZ.78 p-M8x63											M8	63		94
238547	ERZ.78 p-M8x80											M8	80		102
238551	ERZ.78 p-M10x16											M10	16		82
238553	ERZ.78 p-M10x20	78	90.5	23	46.5	50.5	36	3.5	36.5	16	16	M10	20	26	85
238555	ERZ.78 p-M10x25											M10	25		91
238557	ERZ.78 p-M10x32											M10	32		98
238559	ERZ.78 p-M10x40											M10	40		108
238561	ERZ.78 p-M10x50											M10	50		120
238563	ERZ.78 p-M10x63											M10	63		64
238565	ERZ.78 p-M10x80											M10	80		67
238573	ERZ.78 p-M12x25											M12	25		70
238575	ERZ.78 p-M12x32											M12	32		73
238577	ERZ.78 p-M12x40											M12	40		75
238579	ERZ.78 p-M12x50											M12	50		79
238581	ERZ.78 p-M12x63											M12	63		85
238583	ERZ.78 p-M12x80											M12	80		88
238723	ERZ.95 p-M10x16											M10	16		111
238725	ERZ.95 p-M10x20											M10	20		113
238727	ERZ.95 p-M10x25											M10	25		115
238729	ERZ.95 p-M10x32											M10	32		118
238731	ERZ.95 p-M10x40											M10	40		121
238733	ERZ.95 p-M10x50											M10	50		128
238735	ERZ.95 p-M10x63											M10	63		133
238737	ERZ.95 p-M10x80											M10	80		141
238747	ERZ.95 p-M12x16											M12	16		113
238749	ERZ.95 p-M12x20											M12	20		117
238751	ERZ.95 p-M12x25	95	109	26.5	56.5	61.5	43	5	45	19	18	M12	25	28	122
238753	ERZ.95 p-M12x32											M12	32		125
238755	ERZ.95 p-M12x40											M12	40		131
238757	ERZ.95 p-M12x50											M12	50		138
238759	ERZ.95 p-M12x63											M12	63		148
238761	ERZ.95 p-M12x80											M12	80		160
238773	ERZ.95 p-M16x25											M16	25		139
238775	ERZ.95 p-M16x32											M16	32		146
238777	ERZ.95 p-M16x40											M16	40		154
238779	ERZ.95 p-M16x50											M16	50		171
238781	ERZ.95 p-M16x63											M16	63		184
238783	ERZ.95 p-M16x80											M16	80		199