



## Adjustable handles

- **Glass-fibre reinforced polyamide based (PA) technopolymer lever body.**  
Resistant to solvents, oils, greases and other chemical agents.
- **Grey-black** standard colour with matte finish.
- **Zinc alloy toothed element** to couple to the clamping element.
- **AISI 303 stainless steel clamping element**, with threaded hole and tothing to couple to the lever body. Number of teeth  $z$  shown in the table.
- **AISI 303 stainless steel set screw** and retaining spring.

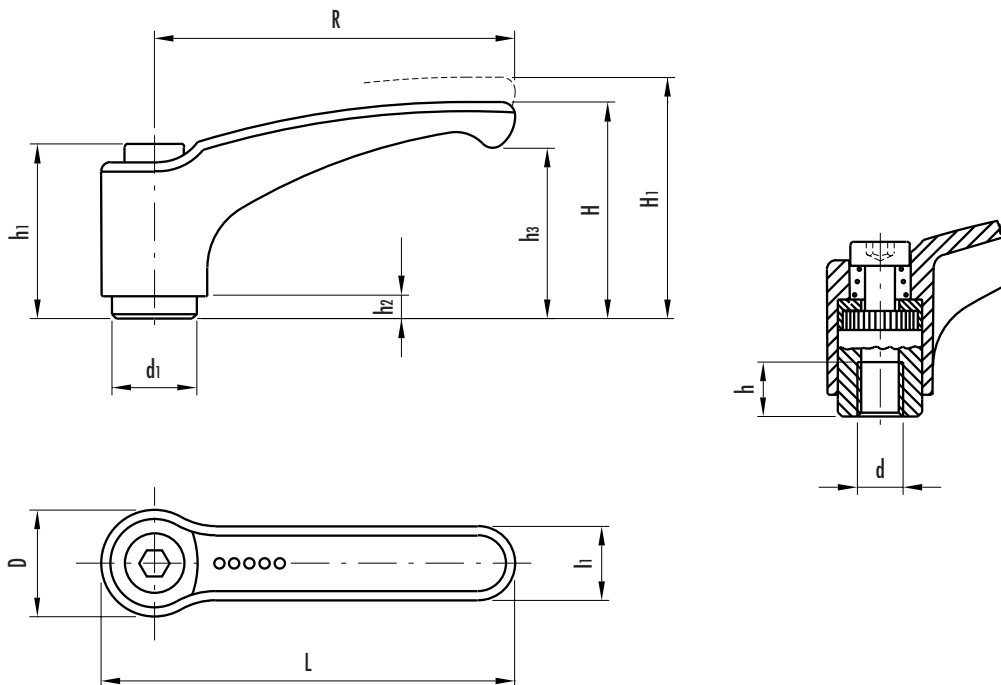
**The internal teeth of the handle are formed in a zinc alloy element moulded into the technopolymer lever.** The engagement of these teeth with the central insert is completely metallic offering great strength and allowing easy modifications in order to create special versions.

Particularly suitable when the lever turning angle is limited owing to lack of space.

To adjust during clamping, lift the lever to disengage clamping device tothing and bring it back to start position. By releasing the lever, the return spring automatically engages tothing once again.

The slightly arched shape of the handle with the ergonomic terminal enlargement gives the operator a comfortable and safe grip, while the thumb rests naturally on the push button.

Sample order:  
239106 ERZ.44 SST-M6  
Adjustable handle with stainless steel insert



Standard elements		Main dimensions										Mounting hole		Teeth no.	Weight
Code	Description	R	L	D	H	H1	h1	h2	h3	d1	l1	d 6H	h	z	grams
239105	ERZ.44 SST-M5	44	52	15.5	30.5	34	24.5	3.5	22.5	10	11	M5	8	18	16
239106	ERZ.44 SST-M6											M6	8		
239135	ERZ.63 SST-M6	63	73.5	19	38.5	42	31	3.5	30	13.5	13.5	M6	10	24	36
239136	ERZ.63 SST-M8											M8	10		
239155	ERZ.78 SST-M8	78	90.5	23	46.5	50.5	36	3.5	36.5	16	16	M8	14	26	61
239156	ERZ.78 SST-M10											M10	14		
239175	ERZ.95 SST-M10	95	109	26.5	56.5	61.5	43	5	45	19	18	M10	17	28	93
239176	ERZ.95 SST-M12											M12	17		