

# LS.A - LV.A - LV.F

ELESA original design

## Bases without no-slip disk

- **Glass-fibre reinforced polyamide-based (PA) technopolymer.**  
Resistant to solvents, oils, greases and other chemical agents.
- **Black** standard colour with matte finish.

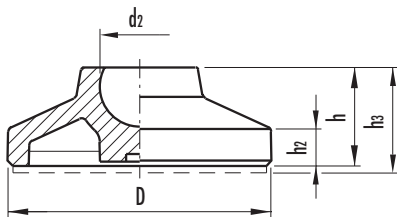
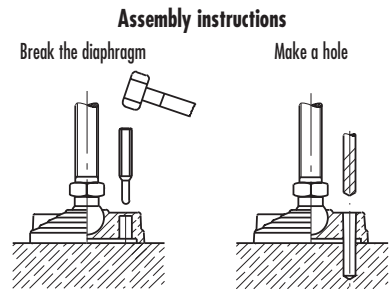
LS.A version (D = 25 - 32 - 40 - 50 mm)  
base without ground mounting.  
LV.A version (D = 60 - 70 - 80 - 100 - 125 mm)  
base without ground mounting.  
LV.F version (D = 80 - 100 - 125 mm)  
base with ground mounting system.



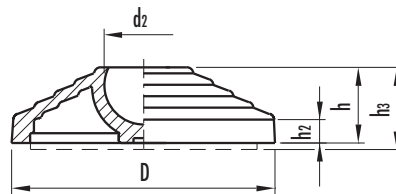
## Bases with no-slip disk

- **Glass-fibre reinforced polyamide-based (PA) technopolymer base.**  
Resistant to solvents, oils, greases and other chemical agents.
- **Black** standard colour with matte finish.
- **No-slip disk** in NBR rubber hardness 70 Shore A. The particular configuration of bases and no-slip disks assures a strong assembly, preventing them from disjunction, also in case of strong impact or adhesion with the floor.

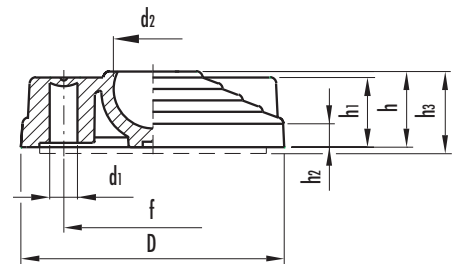
LS.A version (D = 25 - 32 - 40 - 50 mm)  
base without ground mounting.  
LV.A version (D = 60 - 70 - 80 - 100 - 125 mm)  
base without ground mounting.  
LV.F version (D = 80 - 100 - 125 mm)  
base with ground mounting system.



Base LS.A



Base LV.A



Base LV.F

without no-slip disk		with no-slip disk		Main dimensions								Max limit static load*	Ground mounting	Weight	
Code	Description	Code	Description	D	d2	h	h3#	h2	h1	d1	f	[N]		g	g#
340121	LS.A-25-14	340221	LS.A-25-14-AS	25	14	12	15	4	-	-	-	5000	-	4	6
340125	LS.A-32-14	340225	LS.A-32-14-AS	32	14	15	18	5	-	-	-	7000	-	8	12
340131	LS.A-40-14	340231	LS.A-40-14-AS	40	14	17	20	5.5	-	-	-	10000	-	13	20
340135	LS.A-50-14	340235	LS.A-50-14-AS	50	14	19	22	6.5	-	-	-	10000	-	19	31
301241	LV.A-60-14	301741	LV.A-60-14-AS	60	14	24	27	9	-	-	-	14000	-	32	51
301242	LV.A-60-24	301742	LV.A-60-24-AS	60	24	24	27	9	-	-	-	18000	-	29	48
301246	LV.A-70-14	301746	LV.A-70-14-AS	70	14	19	22	7	-	-	-	14000	-	30	50
301251	LV.A-80-14	301751	LV.A-80-14-AS	80	14	24	27	9	-	-	-	16000	-	53	79
301252	LV.A-80-24	301752	LV.A-80-24-AS	80	24	24	27	9	-	-	-	18000	-	49	75
301262	LV.A-100-24	301762	LV.A-100-24-AS	100	24	24	27	9	-	-	-	25000	-	81	135
301272	LV.A-125-24	301772	LV.A-125-24-AS	125	24	46	49	15	-	-	-	28000	-	190	315
301331	LV.F-80-14	301831	LV.F-80-14-AS	80	14	24	27	9	21	8.5	54	16000	●	55	81
301332	LV.F-80-24	301832	LV.F-80-24-AS	80	24	24	27	9	21	8.5	54	18000	●	79	75
301342	LV.F-100-24	301842	LV.F-100-24-AS	100	24	24	27	9	21	12.5	70	25000	●	85	139
301352	LV.F-125-24	301852	LV.F-125-24-AS	125	24	46	49	15	23	12.5	95	28000	●	200	325

\* "Max. limit static load" means the value over which the applied load to the element, in certain conditions of use, may cause plastic material deformation.

# Data with no-slip disk mounted.