

LS.A-25 LS.A-25-AS

Levelling elements

- **Glass-fibre reinforced polyamide-based (PA) technopolymer base.**
Resistant to solvents, oils, greases and other chemical agents.
- **Black** standard colour with matte finish.
- Zinc-plated steel **articulated and threaded stem.**
- **LS.A type: levelling element without no-slip disk.**
- **LS.A-AS type: levelling element with NBR rubber no-slip disk hardness 70 Shore A supplied assembled.**
The particular configuration of bases and no-slip disks assures a strong assembly, preventing separation in case of strong impact or adhesion with the floor.
- Zinc-plated steel **nut** (to be ordered separately see page 512).

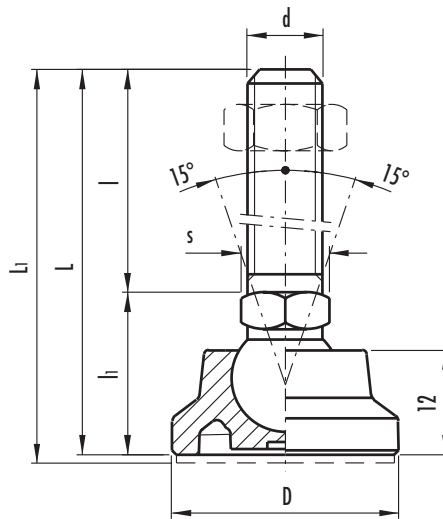


To order bases and stems separately, see codes on page 512.

The levelling element is **supplied disassembled** to make the carriage and the storage easier; the components are in separated packing: less taken volume and best protection from scratches, dirt and corrosion.

10
482

Technical components



without no-slip disk		with no-slip disk		Main dimensions				Threaded stem		Articulation	Wrench	Max limit static load*	Weight	
Code	Description	Code	Description	D	L	L1#	l1	d	l	Ø	s	[N]	g	g#
341121	LS.A-25-14-M8x43	346121	LS.A-25-14-AS-M8x43	25	67	70	24	M8	43	14	14	5000	32	34
341125	LS.A-25-14-M8x68	346125	LS.A-25-14-AS-M8x68		92	95		M8	68				42	44
341221	LS.A-25-14-M10x43	346221	LS.A-25-14-AS-M10x43	25	67	70	24	M10	43	14	14	5000	42	44
341225	LS.A-25-14-M10x68	346225	LS.A-25-14-AS-M10x68		92	95		M10	68				54	56
341231	LS.A-25-14-M10x98	346231	LS.A-25-14-AS-M10x98		122	125		M10	98				68	70
341321	LS.A-25-14-M12x43	346321	LS.A-25-14-AS-M12x43	25	67	70	24	M12	43	14	14	5000	52	54
341325	LS.A-25-14-M12x68	346325	LS.A-25-14-AS-M12x68		92	95		M12	68				69	71
341331	LS.A-25-14-M12x98	346331	LS.A-25-14-AS-M12x98		122	125		M12	98				90	92
341521	LS.A-25-14-M16x68	346521	LS.A-25-14-AS-M16x68	25	92	95	24	M16	68	14	16	5000	113	115
341525	LS.A-25-14-M16x108	346525	LS.A-25-14-AS-M16x108		132	135		M16	108				162	164
341541	LS.A-25-14-M16x148	346541	LS.A-25-14-AS-M16x148		172	175		M16	148				214	216
341561	LS.A-25-14-M16x168	346561	LS.A-25-14-AS-M16x168		192	195		M16	168				240	242

* "Max. limit static load" means the value over which the applied load to the element, in certain conditions of use, may cause plastic material deformation.

Data with no-slip disk mounted.



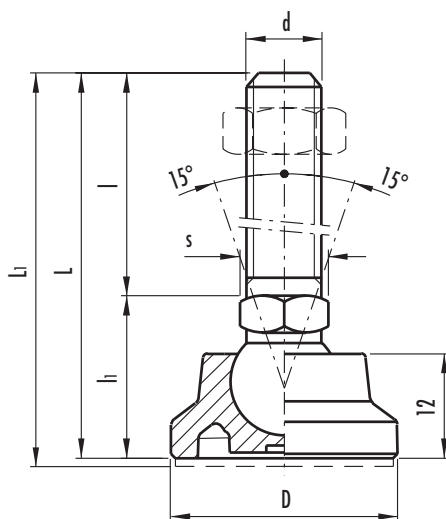
Levelling elements

- **Glass-fibre reinforced polyamide-based (PA) technopolymer base.**
Resistant to solvents, oils, greases and other chemical agents.
- **Black** standard colour with matte finish.
- **AISI 304 stainless steel articulated and threaded stem.**
- **LS.A type: levelling element without no-slip disk.**
- **LS.A-AS type: levelling element with NBR rubber no-slip disk hardness 70 Shore A supplied assembled.**
The particular configuration of bases and no-slip disks assures a strong assembly, preventing separation in case of strong impact or adhesion with the floor.
- Stainless steel AISI 304 **nut** (to be ordered separately see page 512).

To order bases and stems separately, see codes on page 512.

The levelling element is **supplied disassembled** to make the carriage and the storage easier; the components are in separated packing: less taken volume and best protection from scratches and dirt.

The metal parts built with stainless steel AISI 304, thanks to its low sulphur contents (less than 0.030%) make these elements suitable for use on medical machines, equipment for the food and pharmaceutical industry and wherever hygienic, climatic and environmental factors or laws make it mandatory to use corrosion resistant materials.



without no-slip disk		with no-slip disk		Main dimensions				Threaded stem		Articulation	Wrench	Max limit static load*	Weight	
Code	Description	Code	Description	D	L	L1#	l1	d	l	Ø	s	[N]	g	g#
351121	LS.A-25-14-SST-M8x43	356121	LS.A-25-14-AS-SST-M8x43	25	67	70	24	M8	43	14	14	5000	33	35
351125	LS.A-25-14-SST-M8x68	356125	LS.A-25-14-AS-SST-M8x68		92	95		M8	68				43	45
351221	LS.A-25-14-SST-M10x43	356221	LS.A-25-14-AS-SST-M10x43	25	67	70	24	M10	43	14	14	5000	43	45
351225	LS.A-25-14-SST-M10x68	356225	LS.A-25-14-AS-SST-M10x68		92	95		M10	68				56	58
351231	LS.A-25-14-SST-M10x98	356231	LS.A-25-14-AS-SST-M10x98		122	125		M10	98				70	72
351321	LS.A-25-14-SST-M12x43	356321	LS.A-25-14-AS-SST-M12x43	25	67	70	24	M12	43	14	14	5000	53	55
351325	LS.A-25-14-SST-M12x68	356325	LS.A-25-14-AS-SST-M12x68		92	95		M12	68				71	73
351331	LS.A-25-14-SST-M12x98	356331	LS.A-25-14-AS-SST-M12x98		122	125		M12	98				93	95
351521	LS.A-25-14-SST-M16x68	356521	LS.A-25-14-AS-SST-M16x68	25	92	95	24	M16	68	14	16	5000	116	118
351525	LS.A-25-14-SST-M16x108	356525	LS.A-25-14-AS-SST-M16x108		132	135		M16	108				167	169
351541	LS.A-25-14-SST-M16x148	356541	LS.A-25-14-AS-SST-M16x148		172	175		M16	148				220	222
351561	LS.A-25-14-SST-M16x168	356561	LS.A-25-14-AS-SST-M16x168		192	195		M16	168				247	249

* "Max. limit static load" means the value over which the applied load to the element, in certain conditions of use, may cause plastic material deformation.

Data with no-slip disk mounted.

LS.A-32 LS.A-32-AS

Levelling elements

- **Glass-fibre reinforced polyamide-based (PA) technopolymer base.**
Resistant to solvents, oils, greases and other chemical agents.
- **Black** standard colour with matte finish.
- Zinc-plated steel **articulated and threaded stem.**
- **LS.A type: levelling element without no-slip disk.**
- **LS.A-AS type: levelling element with NBR rubber no-slip disk hardness 70 Shore A supplied assembled.**
The particular configuration of bases and no-slip disks assures a strong assembly, preventing separation in case of strong impact or adhesion with the floor.
- Zinc-plated steel **nut** (to be ordered separately see page 512).

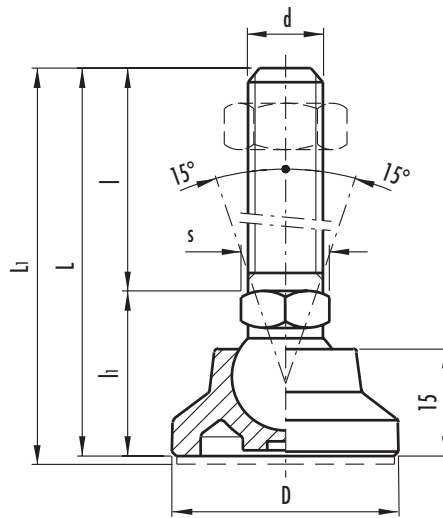


To order bases and stems separately, see codes on page 512.

The levelling element is **supplied disassembled** to make the carriage and the storage easier; the components are in separated packing: less taken volume and best protection from scratches, dirt and corrosion.

10
484

Technical components



without no-slip disk		with no-slip disk		Main dimensions				Threaded stem		Articulation	Wrench	Max limit static load*	Weight	
Code	Description	Code	Description	D	L	L1#	l1	d	l	Ø	s	[N]	g	g#
342121	LS.A-32-14-M8x43	347121	LS.A-32-14-AS-M8x43	32	68	71	25	M8	43	14	14	7000	37	41
342125	LS.A-32-14-M8x68	347125	LS.A-32-14-AS-M8x68		93	96		M8	68				47	51
342221	LS.A-32-14-M10x43	347221	LS.A-32-14-AS-M10x43	32	68	71	25	M10	43	14	14	7000	47	51
342225	LS.A-32-14-M10x68	347225	LS.A-32-14-AS-M10x68		93	96		M10	68				59	63
342231	LS.A-32-14-M10x98	347231	LS.A-32-14-AS-M10x98		123	126		M10	98				73	77
342321	LS.A-32-14-M12x43	347321	LS.A-32-14-AS-M12x43	32	68	71	25	M12	43	14	14	7000	57	61
342325	LS.A-32-14-M12x68	347325	LS.A-32-14-AS-M12x68		93	96		M12	68				74	78
342331	LS.A-32-14-M12x98	347331	LS.A-32-14-AS-M12x98		123	126		M12	98				95	99
342521	LS.A-32-14-M16x68	347521	LS.A-32-14-AS-M16x68	32	93	96	25	M16	68	14	16	7000	118	122
342525	LS.A-32-14-M16x108	347525	LS.A-32-14-AS-M16x108		133	136		M16	108				170	174
342541	LS.A-32-14-M16x148	347541	LS.A-32-14-AS-M16x148		173	176		M16	148				222	226
342561	LS.A-32-14-M16x168	347561	LS.A-32-14-AS-M16x168		193	196		M16	168				248	252

* "Max. limit static load" means the value over which the applied load to the element, in certain conditions of use, may cause plastic material deformation.

Data with no-slip disk mounted.



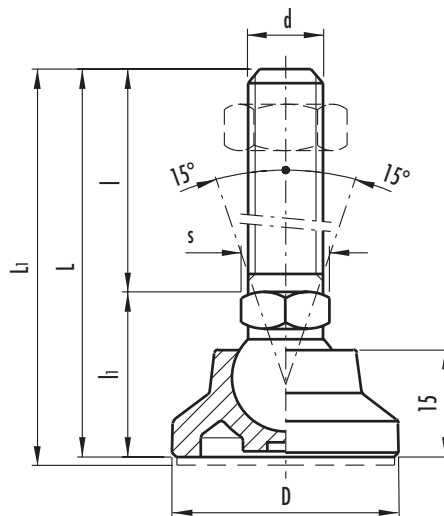
Levelling elements

- **Glass-fibre reinforced polyamide-based (PA) technopolymer base.**
Resistant to solvents, oils, greases and other chemical agents.
- **Black** standard colour with matte finish.
- **AISI 304 stainless steel articulated and threaded stem.**
- **LS.A type: levelling element without no-slip disk.**
- **LS.A-AS type: levelling element with NBR rubber no-slip disk hardness 70 Shore A supplied assembled.**
The particular configuration of bases and no-slip disks assures a strong assembly, preventing separation in case of strong impact or adhesion with the floor.
- **Stainless steel AISI 304 nut** (to be ordered separately see page 512).

To order bases and stems separately, see codes on page 512.

The levelling element is **supplied disassembled** to make the carriage and the storage easier; the components are in separated packing: less taken volume and best protection from scratches and dirt.

The metal parts built with stainless steel AISI 304, thanks to its low sulphur contents (less than 0.030%) make these elements suitable for use on medical machines, equipment for the food and pharmaceutical industry and wherever hygienic, climatic and environmental factors or laws make it mandatory to use corrosion resistant materials.



without no-slip disk		with no-slip disk		Main dimensions				Threaded stem	Articulation	Wrench	Max limit static load*	Weight		
Code	Description	Code	Description	D	L	L1#	l1	d	l	Ø	s	[N]	g	g#
352121	LS.A-32-14-SST-M8x43	357121	LS.A-32-14-AS-SST-M8x43	32	68	71	25	M8	43	14	14	7000	38	42
352125	LS.A-32-14-SST-M8x68	357125	LS.A-32-14-AS-SST-M8x68		93	96		M8	68				48	52
352221	LS.A-32-14-SST-M10x43	357221	LS.A-32-14-AS-SST-M10x43	32	68	71	25	M10	43	14	14	7000	48	52
352225	LS.A-32-14-SST-M10x68	357225	LS.A-32-14-AS-SST-M10x68		93	96		M10	68				61	65
352231	LS.A-32-14-SST-M10x98	357231	LS.A-32-14-AS-SST-M10x98		123	126		M10	98				75	79
352321	LS.A-32-14-SST-M12x43	357321	LS.A-32-14-AS-SST-M12x43	32	68	71	25	M12	43	14	14	7000	58	62
352325	LS.A-32-14-SST-M12x68	357325	LS.A-32-14-AS-SST-M12x68		93	96		M12	68				78	82
352331	LS.A-32-14-SST-M12x98	357331	LS.A-32-14-AS-SST-M12x98		123	126		M12	98				98	102
352521	LS.A-32-14-SST-M16x68	357521	LS.A-32-14-AS-SST-M16x68	32	93	97	25	M16	68	14	16	7000	121	125
352525	LS.A-32-14-SST-M16x108	357525	LS.A-32-14-AS-SST-M16x108		133	137		M16	108				175	179
352541	LS.A-32-14-SST-M16x148	357541	LS.A-32-14-AS-SST-M16x148		173	176		M16	148				228	232
352561	LS.A-32-14-SST-M16x168	357561	LS.A-32-14-AS-SST-M16x168		193	196		M16	168				255	259

* "Max. limit static load" means the value over which the applied load to the element, in certain conditions of use, may cause plastic material deformation.

Data with no-slip disk mounted.

LS.A-40 LS.A-40-AS

Levelling elements

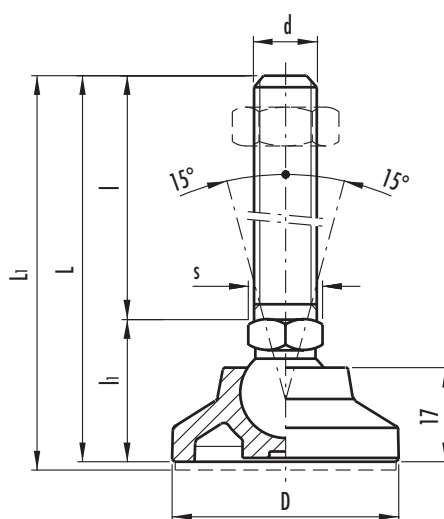
- **Glass-fibre reinforced polyamide-based (PA) technopolymer base.**
Resistant to solvents, oils, greases and other chemical agents.
- **Black** standard colour with matte finish.
- Zinc-plated steel **articulated and threaded stem.**
- **LS.A type: levelling element without no-slip disk.**
- **LS.A-AS type: levelling element with NBR rubber no-slip disk hardness 70 Shore A supplied assembled.**

The particular configuration of bases and no-slip disks assures a strong assembly, preventing separation in case of strong impact or adhesion with the floor.

- Zinc-plated steel **nut** (to be ordered separately see page 512).

To order bases and stems separately, see codes on page 512.

The levelling element is **supplied disassembled** to make the carriage and the storage easier; the components are in separated packing: less taken volume and best protection from scratches, dirt and corrosion.



without no-slip disk		with no-slip disk		Main dimensions				Threaded stem		Articulation	Wrench	Max limit static load*	Weight	
Code	Description	Code	Description	D	L	L1#	l1	d	l	Ø	s	[N]	g	g#
343121	LS.A-40-14-M8x43	348121	LS.A-40-14-AS-M8x43	40	68	71	25	M8	43	14	14	10000	41	48
343125	LS.A-40-14-M8x68	348125	LS.A-40-14-AS-M8x68		93	96		M8	68				51	58
343221	LS.A-40-14-M10x43	348221	LS.A-40-14-AS-M10x43	40	68	71	25	M10	43	14	14	10000	51	58
343225	LS.A-40-14-M10x68	348225	LS.A-40-14-AS-M10x68		93	96		M10	68				63	70
343231	LS.A-40-14-M10x98	348231	LS.A-40-14-AS-M10x98		123	126		M10	98				77	84
343321	LS.A-40-14-M12x43	348321	LS.A-40-14-AS-M12x43	40	68	71	25	M12	43	14	14	10000	61	68
343325	LS.A-40-14-M12x68	348325	LS.A-40-14-AS-M12x68		93	96		M12	68				78	85
343331	LS.A-40-14-M12x98	348331	LS.A-40-14-AS-M12x98		123	126		M12	98				99	106
343521	LS.A-40-14-M16x68	348521	LS.A-40-14-AS-M16x68	40	93	96	25	M16	68	14	16	10000	122	129
343525	LS.A-40-14-M16x108	348525	LS.A-40-14-AS-M16x108		133	136		M16	108				174	181
343541	LS.A-40-14-M16x148	348541	LS.A-40-14-AS-M16x148		173	176		M16	148				226	233
343561	LS.A-40-14-M16x168	348561	LS.A-40-14-AS-M16x168		193	196		M16	168				252	259

* "Max. limit static load" means the value over which the applied load to the element, in certain conditions of use, may cause plastic material deformation.

Data with no-slip disk mounted.



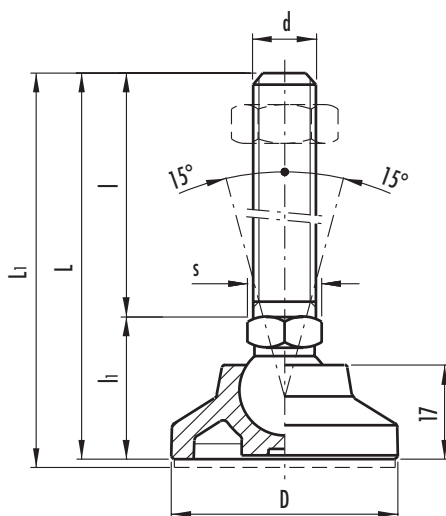
Levelling elements

- **Glass-fibre reinforced polyamide-based (PA) technopolymer base.**
Resistant to solvents, oils, greases and other chemical agents.
- **Black** standard colour with matte finish.
- **AISI 304 stainless steel articulated and threaded stem.**
- **LS.A type: levelling element without no-slip disk.**
- **LS.A-AS type: levelling element with NBR rubber no-slip disk hardness 70 Shore A supplied assembled.**
The particular configuration of bases and no-slip disks assures a strong assembly, preventing separation in case of strong impact or adhesion with the floor.
- **Stainless steel AISI 304 nut** (to be ordered separately see page 512).

To order bases and stems separately, see codes on page 512.

The levelling element is **supplied disassembled** to make the carriage and the storage easier; the components are in separated packing: less taken volume and best protection from scratches and dirt.

The metal parts built with stainless steel AISI 304, thanks to its low sulphur contents (less than 0.030%) make these elements suitable for use on medical machines, equipment for the food and pharmaceutical industry and wherever hygienic, climatic and environmental factors or laws make it mandatory to use corrosion resistant materials.



without no-slip disk		with no-slip disk		Main dimensions				Threaded stem		Articulation	Wrench	Max limit static load*	Weight	
Code	Description	Code	Description	D	L	L1#	l1	d	l	Ø	s	[N]	g	g#
353121	LS.A-40-14-SST-M8x43	358121	LS.A-40-14-AS-SST-M8x43	40	68	71	25	M8	43	14	14	10000	42	49
353125	LS.A-40-14-SST-M8x68	358125	LS.A-40-14-AS-SST-M8x68		93	96		M8	68				52	59
353221	LS.A-40-14-SST-M10x43	358221	LS.A-40-14-AS-SST-M10x43	40	68	71	25	M10	43	14	14	10000	52	59
353225	LS.A-40-14-SST-M10x68	358225	LS.A-40-14-AS-SST-M10x68		93	96		M10	68				65	72
353231	LS.A-40-14-SST-M10x98	358231	LS.A-40-14-AS-SST-M10x98		123	126		M10	98				79	86
353321	LS.A-40-14-SST-M12x43	358321	LS.A-40-14-AS-SST-M12x43	40	68	71	25	M12	43	14	14	10000	62	69
353325	LS.A-40-14-SST-M12x68	358325	LS.A-40-14-AS-SST-M12x68		93	96		M12	68				80	87
353331	LS.A-40-14-SST-M12x98	358331	LS.A-40-14-AS-SST-M12x98		123	126		M12	98				102	109
353521	LS.A-40-14-SST-M16x68	358521	LS.A-40-14-AS-SST-M16x68	40	93	96	25	M16	68	14	16	10000	125	132
353525	LS.A-40-14-SST-M16x108	358525	LS.A-40-14-AS-SST-M16x108		133	136		M16	108				179	186
353541	LS.A-40-14-SST-M16x148	358541	LS.A-40-14-AS-SST-M16x148		173	176		M16	148				232	239
353561	LS.A-40-14-SST-M16x168	358561	LS.A-40-14-AS-SST-M16x168		193	196		M16	168				259	266

* "Max. limit static load" means the value over which the applied load to the element, in certain conditions of use, may cause plastic material deformation.

Data with no-slip disk mounted.

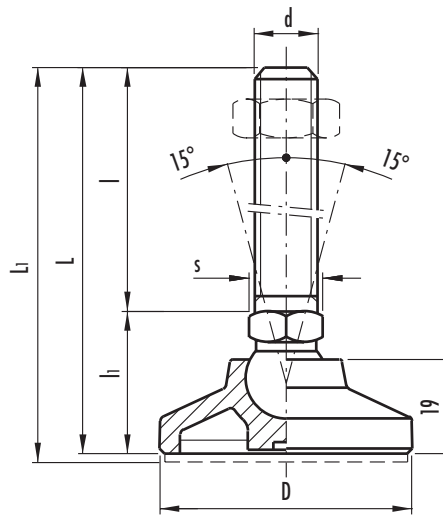
LS.A-50 LS.A-50-AS

Levelling elements

- **Glass-fibre reinforced polyamide-based (PA) technopolymer base.**
Resistant to solvents, oils, greases and other chemical agents.
- **Black** standard colour with matte finish.
- Zinc-plated steel **articulated and threaded stem.**
- **LS.A type: levelling element without no-slip disk.**
- **LS.A-AS type: levelling element with NBR rubber no-slip disk hardness 70 Shore A supplied assembled.**
The particular configuration of bases and no-slip disks assures a strong assembly, preventing separation in case of strong impact or adhesion with the floor.
- Zinc-plated steel **nut** (to be ordered separately see page 512).

To order bases and stems separately, see codes on page 512.

The levelling element is **supplied disassembled** to make the carriage and the storage easier; the components are in separated packing: less taken volume and best protection from scratches, dirt and corrosion.



without no-slip disk		with no-slip disk		Main dimensions				Threaded stem		Articulation	Wrench	Max limit static load*	Weight	
Code	Description	Code	Description	D	L	L1#	l1	d	l	Ø	s	[N]	g	g#
344121	LS.A-50-14-M8x43	349121	LS.A-50-14-AS-M8x43	50	70	73	27	M8	43	14	14	10000	48	60
344125	LS.A-50-14-M8x68	349125	LS.A-50-14-AS-M8x68		95	98		M8	68				58	70
344221	LS.A-50-14-M10x43	349221	LS.A-50-14-AS-M10x43	50	70	73	27	M10	43	14	14	10000	58	70
344225	LS.A-50-14-M10x68	349225	LS.A-50-14-AS-M10x68		95	98		M10	68				70	82
344231	LS.A-50-14-M10x98	349231	LS.A-50-14-AS-M10x98		125	128		M10	98				84	96
344321	LS.A-50-14-M12x43	349321	LS.A-50-14-AS-M12x43	50	70	73	27	M12	43	14	14	10000	68	80
344325	LS.A-50-14-M12x68	349325	LS.A-50-14-AS-M12x68		95	98		M12	68				85	97
344331	LS.A-50-14-M12x98	349331	LS.A-50-14-AS-M12x98		125	128		M12	98				106	118
344521	LS.A-50-14-M16x68	349521	LS.A-50-14-AS-M16x68	50	95	98	27	M16	68	14	16	10000	129	141
344525	LS.A-50-14-M16x108	349525	LS.A-50-14-AS-M16x108		135	138		M16	108				181	193
344541	LS.A-50-14-M16x148	349541	LS.A-50-14-AS-M16x148		175	178		M16	148				233	245
344561	LS.A-50-14-M16x168	349561	LS.A-50-14-AS-M16x168		195	198		M16	168				259	271

* "Max. limit static load" means the value over which the applied load to the element, in certain conditions of use, may cause plastic material deformation.

Data with no-slip disk mounted.



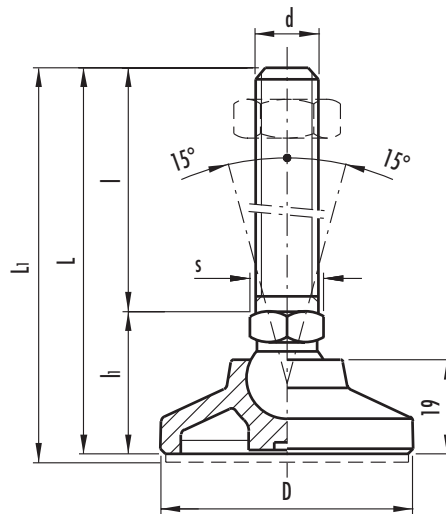
Levelling elements

- **Glass-fibre reinforced polyamide-based (PA) technopolymer base.**
Resistant to solvents, oils, greases and other chemical agents.
- **AISI 304 stainless steel articulated and threaded stem.**
- **LS.A type: levelling element without no-slip disk.**
- **LS.A-AS type: levelling element with NBR rubber no-slip disk hardness 70 Shore A supplied assembled.**
The particular configuration of bases and no-slip disks assures a strong assembly, preventing separation in case of strong impact or adhesion with the floor.
- **Stainless steel AISI 304 nut** (to be ordered separately see page 512).

To order bases and stems separately, see codes on page 512.

The levelling element is **supplied disassembled** to make the carriage and the storage easier; the components are in separated packing: less taken volume and best protection from scratches and dirt.

The metal parts built with stainless steel AISI 304, thanks to its low sulphur contents (less than 0.030%) make these elements suitable for use on medical machines, equipment for the food and pharmaceutical industry and wherever hygienic, climatic and environmental factors or laws make it mandatory to use corrosion resistant materials.



without no-slip disk		with no-slip disk		Main dimensions				Threaded stem		Articulation	Wrench	Max limit static load*	Weight	
Code	Description	Code	Description	D	L	L1#	l1	d	l	Ø	s	[N]	g	g#
354121	LS.A-50-14-SST-M8x43	359121	LS.A-50-14-AS-SST-M8x43	50	70	73	27	M8	43	14	14	10000	49	61
354125	LS.A-50-14-SST-M8x68	359125	LS.A-50-14-AS-SST-M8x68		95	98		M8	68				59	71
354221	LS.A-50-14-SST-M10x43	359221	LS.A-50-14-AS-SST-M10x43	50	70	73	27	M10	43	14	14	10000	59	71
354225	LS.A-50-14-SST-M10x68	359225	LS.A-50-14-AS-SST-M10x68		95	98		M10	68				72	84
354231	LS.A-50-14-SST-M10x98	359231	LS.A-50-14-AS-SST-M10x98		125	128		M10	98				86	98
354321	LS.A-50-14-SST-M12x43	359321	LS.A-50-14-AS-SST-M12x43	50	70	73	27	M12	43	14	14	10000	69	81
354325	LS.A-50-14-SST-M12x68	359325	LS.A-50-14-AS-SST-M12x68		95	98		M12	68				87	99
354331	LS.A-50-14-SST-M12x98	359331	LS.A-50-14-AS-SST-M12x98		125	128		M12	98				109	121
354521	LS.A-50-14-SST-M16x68	359521	LS.A-50-14-AS-SST-M16x68	50	95	98	27	M16	68	14	16	10000	132	144
354525	LS.A-50-14-SST-M16x108	359525	LS.A-50-14-AS-SST-M16x108		135	138		M16	108				185	197
354541	LS.A-50-14-SST-M16x148	359541	LS.A-50-14-AS-SST-M16x148		175	178		M16	148				239	251
354561	LS.A-50-14-SST-M16x168	359561	LS.A-50-14-AS-SST-M16x168		195	198		M16	168				266	278

* "Max. limit static load" means the value over which the applied load to the element, in certain conditions of use, may cause plastic material deformation.
Data with no-slip disk mounted.