

LV.A-ELK

ELESA original design

Levelling elements

• Base

Glass-fibre reinforced polyamide-based (PA) technopolymer. Resistant to solvents, oils, greases and other chemical agents.

• Colour

Black with matte finish.

• Stud with built-in adjustment knob

Articulated zinc-plated steel threaded stud. Adjustment knob type ELK. In technopolymer (see Elesa General Catalogue on page 33).

• Screw and retaining washer (M4x10)

Burnished steel.

• LV.A execution

Levelling element without no-slip disk.

• LV.A-AS

Levelling elements with NBR rubber hardness 70 shore A no-slip disk supplied assembled.

• Nut

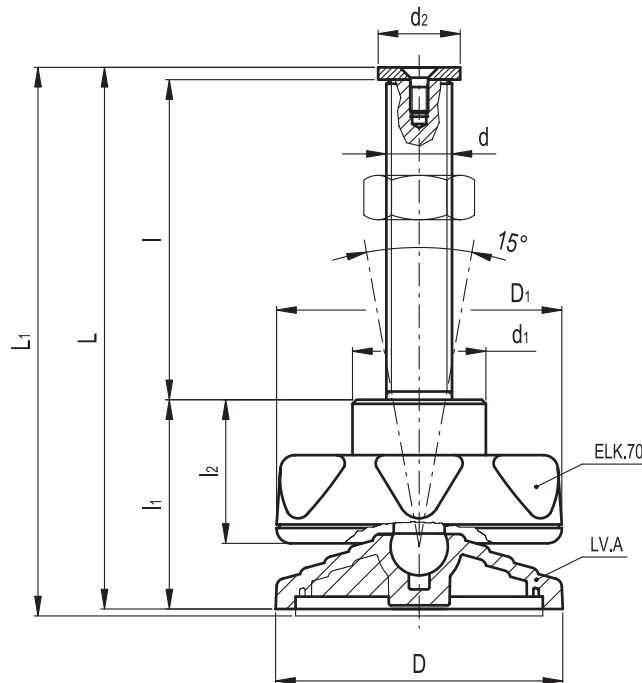
Zinc-plated steel nuts are available. To be ordered separately (see Elesa Technical Components catalogue on page 40).

Threaded studs with built-in knob SM-14-M16x78-ELK (code 302581) are also available sold separately to fit to other bases with hole for articulation with diameter 14 mm. Bases in different sizes can be ordered separately (see Elesa Technical Components catalogue on page 39).



Characteristics

The built-in base knob type ELK, enables the operator to adjust manually the stud without the use of any tools or keys.



| Standard elements | | | | Main dimensions | | | | | | Threaded stem | | Articulation | Max limit static load* | Weight | | | |
|----------------------|-----------------------|-------------------|--------------------------|-----------------|----|-----|-----|----|----|---------------|----|--------------|------------------------|--------|-------|-----|-----|
| Without no-slip disk | | With no-slip disk | | D | D1 | L | L1# | l1 | l2 | d1 | d2 | d | l | Ø | [N] | g | g# |
| Code | Description | Code | Description | | | | | | | | | | | | | | |
| 304118 | LV.A-70-14-M16x78-ELK | 308118 | LV.A-70-14-AS-M16x78-ELK | 70 | 70 | 132 | 135 | 51 | 35 | 33 | 20 | M16 | 78 | 14 | 14000 | 332 | 352 |
| 304581 | LV.A-80-14-M16x78-ELK | 308581 | LV.A-80-14-AS-M16x78-ELK | 80 | | 137 | 140 | 56 | | | | | | | | 330 | 356 |

Data with no-slip disk mounted.

* "Max limit static load" means the value over which the applied load to the element, in certain conditions of use, may cause plastic material deformation.