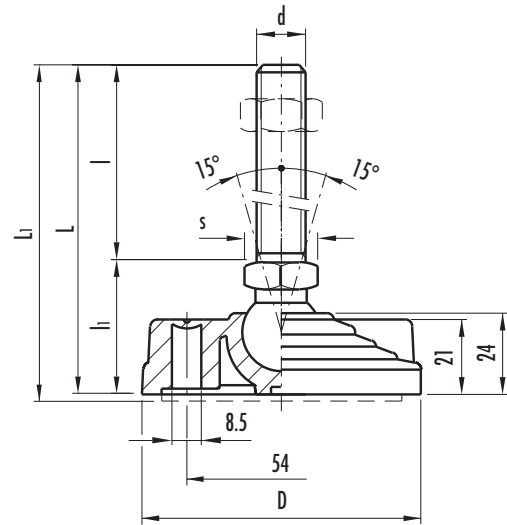


LV.F-80 LV.F-80-AS

ELESA original design

Levelling elements for ground mounting

- **Glass-fibre reinforced polyamide-based (PA) technopolymer base.**
Resistant to solvents, oils, greases and other chemical agents.
- **Black** standard colour with matte finish.
- Zinc-plated steel **articulated and threaded stem.**
- **LV.F type: levelling element without no-slip disk.**
- **LV.F-AS type: levelling element with NBR rubber no-slip disk hardness 70 Shore A supplied assembled.**
The particular configuration of bases and no-slip disks assures a strong assembly, preventing separation in case of strong impact or adhesion with the floor.
- **Two holes** at 180° for ground mounting, covered by breakable plastic diaphragms which can be removed easily by a metal tool. They avoid all unhealthy deposit of dirt and dust when the ground mounting is not required (see assembly instructions on page 497).
The levelling elements are **supplied disassembled** in separated packing: less taken volume and best protection from scratches, dirt and corrosion.
- Zinc-plated steel **nut** (to be ordered separately see page 512).



To order bases and stems separately, see codes on page 512.

The light V knurling under the lower lip of the levelling element provides excellent **stability and grip** when using the levelling element without the no-slip disk even on surfaces that are not perfectly flat.

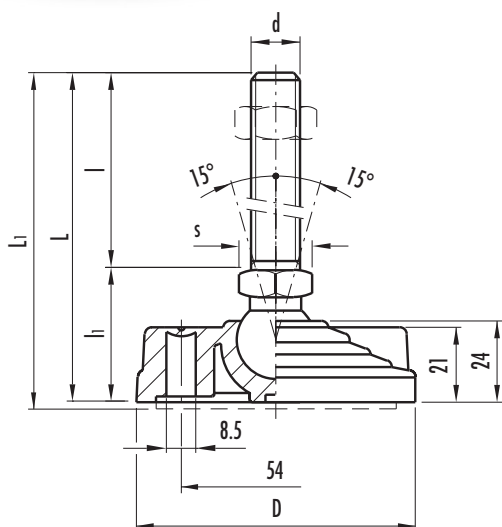
10
496

Technical components

without no-slip disk		with no-slip disk		Main dimensions				Threaded stem		Articulation	Wrench	Max limit static load*	Weight	
Code	Description	Code	Description	D	L	L1#	l1	d	l	Ø	s	[N]	g	g#
311121	LV.F-80-14-M8x43	314121	LV.F-80-14-AS-M8x43	80	76	79	33	M8	43	14	14	16000	85	111
311125	LV.F-80-14-M8x68	314125	LV.F-80-14-AS-M8x68		101	104		M8	68				97	123
311221	LV.F-80-14-M10x43	314221	LV.F-80-14-AS-M10x43	80	76	79	33	M10	43	14	14	16000	94	120
311225	LV.F-80-14-M10x68	314225	LV.F-80-14-AS-M10x68		101	104		M10	68				106	132
311231	LV.F-80-14-M10x98	314231	LV.F-80-14-AS-M10x98		131	134		M10	98				120	146
311321	LV.F-80-14-M12x43	314321	LV.F-80-14-AS-M12x43	80	76	79	33	M12	43	14	14	16000	104	130
311325	LV.F-80-14-M12x68	314325	LV.F-80-14-AS-M12x68		101	104		M12	68				121	147
311331	LV.F-80-14-M12x98	314331	LV.F-80-14-AS-M12x98		131	134		M12	98				142	168
311521	LV.F-80-14-M16x68	314521	LV.F-80-14-AS-M16x68	80	101	104	33	M16	68	14	16	16000	165	191
311525	LV.F-80-14-M16x108	314525	LV.F-80-14-AS-M16x108		141	144		M16	108				217	243
311541	LV.F-80-14-M16x148	314541	LV.F-80-14-AS-M16x148		181	184		M16	148				269	295
311561	LV.F-80-14-M16x168	314561	LV.F-80-14-AS-M16x168		201	204		M16	168				295	321
311621	LV.F-80-24-M16x58	314621	LV.F-80-24-AS-M16x58	80	101	104	43	M16	58	24	24	18000	227	253
311625	LV.F-80-24-M16x98	314625	LV.F-80-24-AS-M16x98		141	144		M16	98				278	304
311641	LV.F-80-24-M16x138	314641	LV.F-80-24-AS-M16x138		181	184		M16	138				328	354
311661	LV.F-80-24-M16x158	314661	LV.F-80-24-AS-M16x158		201	204		M16	158				355	381
311725	LV.F-80-24-M20x98	314725	LV.F-80-24-AS-M20x98	80	141	144	43	M20	98	24	24	18000	348	374
311741	LV.F-80-24-M20x138	314741	LV.F-80-24-AS-M20x138		181	184		M20	138				427	453
311761	LV.F-80-24-M20x158	314761	LV.F-80-24-AS-M20x158		201	204		M20	158				466	492
311781	LV.F-80-24-M20x198	314781	LV.F-80-24-AS-M20x198		241	244		M20	198				549	575
311825	LV.F-80-24-M24x98	314825	LV.F-80-24-AS-M24x98	80	141	144	43	M24	98	24	24	18000	446	472
311861	LV.F-80-24-M24x158	314861	LV.F-80-24-AS-M24x158		201	204		M24	158				618	644
311881	LV.F-80-24-M24x198	314881	LV.F-80-24-AS-M24x198		241	244		M24	198				736	762

* "Max. limit static load" means the value over which the applied load to the element, in certain conditions of use, may cause plastic material deformation.

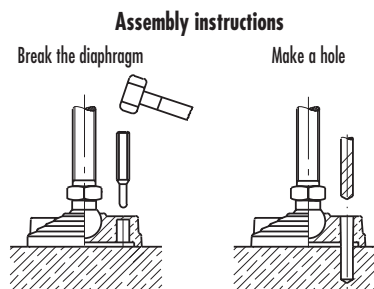
Data with no-slip disk mounted.



Levelling elements for ground mounting

- **Glass-fibre reinforced polyamide-based (PA) technopolymer base.**
Resistant to solvents, oils, greases and other chemical agents.
- **AISI 304 stainless steel articulated and threaded stem.**
- **LV.F type: levelling element without no-slip disk.**
- **LV.F-AS type: levelling element with NBR rubber no-slip disk hardness 70 Shore A supplied assembled.**
The particular configuration of bases and no-slip disks assures a strong assembly, preventing separation in case of strong impact or adhesion with the floor.
- **Two holes** at 180° for ground mounting, covered by breakable plastic diaphragms which can be removed easily by a metal tool. They avoid all unhealthy deposit of dirt and dust when the ground mounting is not required (see assembly instructions).
- **AISI 304 stainless steel nut** (to be ordered separately see page 512).

To order bases and stems separately, see codes on page 512.



without no-slip disk		with no-slip disk		Main dimensions				Threaded stem	Articulation	Wrench	Max limit static load*	Weight			
Code	Description	Code	Description	D	L	L1#	l1	d	l	Ø	s	[N]	g	g#	
331121	LV.F-80-14-SST-M8x43	334121	LV.F-80-14-AS-SST-M8x43	80	76	79	33	M8	43	14	14	16000	86	112	
331125	LV.F-80-14-SST-M8x68	334125	LV.F-80-14-AS-SST-M8x68		101	104		104	M8				68	98	124
331221	LV.F-80-14-SST-M10x43	334221	LV.F-80-14-AS-SST-M10x43	80	76	79	33	M10	43	14	14	16000	95	121	
331225	LV.F-80-14-SST-M10x68	334225	LV.F-80-14-AS-SST-M10x68		101	104		104	M10				68	108	134
331231	LV.F-80-14-SST-M10x98	334231	LV.F-80-14-AS-SST-M10x98		131	134		134	M10				98	122	148
331321	LV.F-80-14-SST-M12x43	334321	LV.F-80-14-AS-SST-M12x43	80	76	79	33	M12	43	14	14	16000	105	131	
331325	LV.F-80-14-SST-M12x68	334325	LV.F-80-14-AS-SST-M12x68		101	104		104	M12				68	123	149
331331	LV.F-80-14-SST-M12x98	334331	LV.F-80-14-AS-SST-M12x98		131	134		134	M12				98	145	171
331521	LV.F-80-14-SST-M16x68	334521	LV.F-80-14-AS-SST-M16x68	80	101	104	33	M16	68	14	16	16000	168	194	
331525	LV.F-80-14-SST-M16x108	334525	LV.F-80-14-AS-SST-M16x108		141	144		144	M16				108	222	248
331541	LV.F-80-14-SST-M16x148	334541	LV.F-80-14-AS-SST-M16x148		181	184		184	M16				148	275	301
331561	LV.F-80-14-SST-M16x168	334561	LV.F-80-14-AS-SST-M16x168		201	204		204	M16				168	302	328
331621	LV.F-80-24-SST-M16x58	334621	LV.F-80-24-AS-SST-M16x58	80	101	104	43	M16	58	24	24	18000	230	256	
331625	LV.F-80-24-SST-M16x98	334625	LV.F-80-24-AS-SST-M16x98		141	144		144	M16				98	282	308
331641	LV.F-80-24-SST-M16x138	334641	LV.F-80-24-AS-SST-M16x138		181	184		184	M16				138	333	359
331661	LV.F-80-24-SST-M16x158	334661	LV.F-80-24-AS-SST-M16x158		201	204		204	M16				158	361	387
331725	LV.F-80-24-SST-M20x98	334725	LV.F-80-24-AS-SST-M20x98	80	141	144	43	M20	98	24	24	18000	354	380	
331741	LV.F-80-24-SST-M20x138	334741	LV.F-80-24-AS-SST-M20x138		181	184		184	M20				138	434	460
331761	LV.F-80-24-SST-M20x158	334761	LV.F-80-24-AS-SST-M20x158		201	204		204	M20				158	474	500
331781	LV.F-80-24-SST-M20x198	334781	LV.F-80-24-AS-SST-M20x198		241	244		244	M20				198	559	585
331825	LV.F-80-24-SST-M24x98	334825	LV.F-80-24-AS-SST-M24x98	80	141	144	43	M24	98	24	24	18000	454	480	
331861	LV.F-80-24-SST-M24x158	334861	LV.F-80-24-AS-SST-M24x158		201	204		204	M24				158	629	655
331881	LV.F-80-24-SST-M24x198	334881	LV.F-80-24-AS-SST-M24x198		241	244		244	M24				198	750	776

* "Max. limit static load" means the value over which the applied load to the element, in certain conditions of use, may cause plastic material deformation.

Data with no-slip disk mounted.

LV.F-100 LV.F-100-AS

ELESA original design

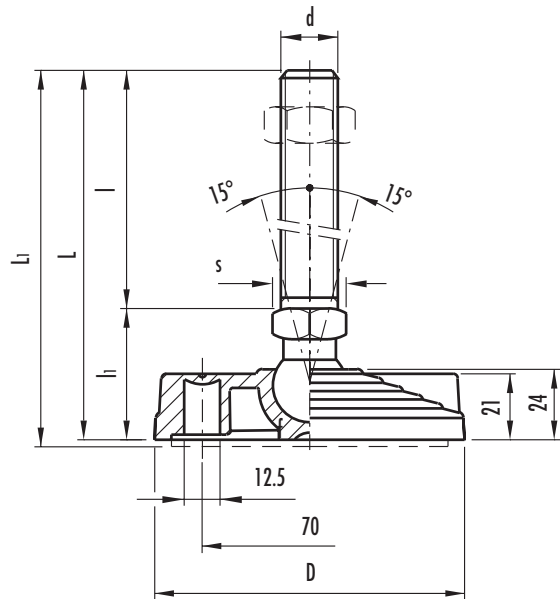
Levelling elements for ground mounting

- **Glass-fibre reinforced polyamide-based (PA) technopolymer base.**
Resistant to solvents, oils, greases and other chemical agents.
- **Black** standard colour with matte finish.
- Zinc-plated steel **articulated and threaded stem.**
- **LV.F type: levelling element without no-slip disk.**
- **LV.F-AS type: levelling element with NBR rubber no-slip disk hardness 70 Shore A supplied assembled.**
The particular configuration of bases and no-slip disks assures a strong assembly, preventing separation in case of strong impact or adhesion with the floor.
- **Two holes** at 180° for ground mounting, covered by breakable plastic diaphragms which can be removed easily by a metal tool. They avoid all unhealthy deposit of dirt and dust when the ground mounting is not required (see assembly instructions on page 501).
The levelling elements are **supplied disassembled** in separated packing: less taken volume and best protection from scratches, dirt and corrosion.
- Zinc-plated steel **nut** (to be ordered separately see page 512).



To order bases and stems separately, see codes on page 512.

The light V knurling under the lower lip of the levelling element provides excellent **stability and grip** when using the levelling element without the no-slip disk even on surfaces that are not perfectly flat.



without no-slip disk		with no-slip disk		Main dimensions			Threaded stem		Articulation	Wrench	Max limit static load*	Weight		
Code	Description	Code	Description	D	L	L1#	l1	d	l	Ø	s	[N]	g	g#
312521	LV.F-100-24-M16x58	315521	LV.F-100-24-AS-M16x58	100	101	104	43	M16	58	24	24	25000	257	311
312525	LV.F-100-24-M16x98	315525	LV.F-100-24-AS-M16x98		141	144		M16	98				308	362
312541	LV.F-100-24-M16x138	315541	LV.F-100-24-AS-M16x138		181	184		M16	138				358	412
312561	LV.F-100-24-M16x158	315561	LV.F-100-24-AS-M16x158		201	204		M16	158				385	439
312625	LV.F-100-24-M20x98	315625	LV.F-100-24-AS-M20x98	100	141	144	43	M20	98	24	24	25000	378	432
312641	LV.F-100-24-M20x138	315641	LV.F-100-24-AS-M20x138		181	184		M20	138				457	511
312661	LV.F-100-24-M20x158	315661	LV.F-100-24-AS-M20x158		201	204		M20	158				496	550
312681	LV.F-100-24-M20x198	315681	LV.F-100-24-AS-M20x198		241	244		M20	198				579	633
312725	LV.F-100-24-M24x98	315725	LV.F-100-24-AS-M24x98	100	141	144	43	M24	98	24	24	25000	476	530
312761	LV.F-100-24-M24x158	315761	LV.F-100-24-AS-M24x158		201	204		M24	158				648	702
312781	LV.F-100-24-M24x198	315781	LV.F-100-24-AS-M24x198		241	244		M24	198				766	820

* "Max. limit static load" means the value over which the applied load to the element, in certain conditions of use, may cause plastic material deformation.

Data with no-slip disk mounted.



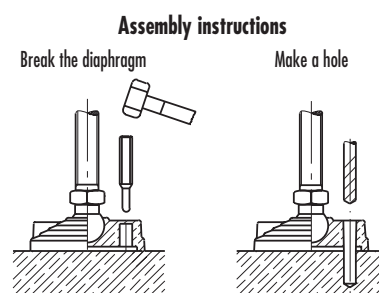
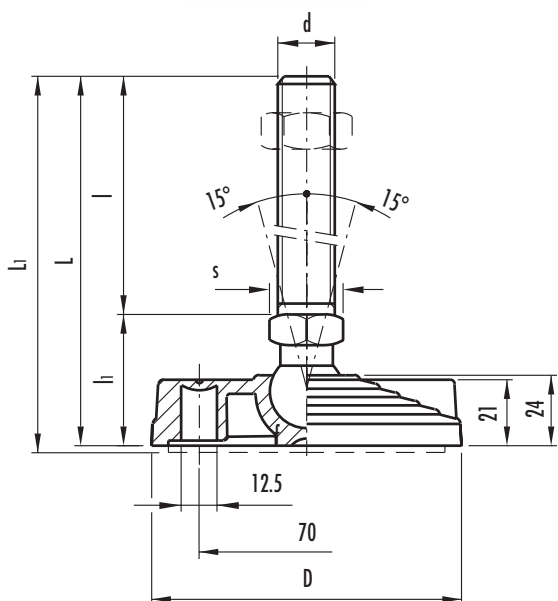
Levelling elements for ground mounting

- **Glass-fibre reinforced polyamide-based (PA) technopolymer base.**
Resistant to solvents, oils, greases and other chemical agents.
- **Black** standard colour with matte finish.
- **AISI 304 stainless steel articulated and threaded stem.**
- **LV.F type: levelling element without no-slip disk.**
- **LV.F-AS type: levelling element with NBR rubber no-slip disk hardness 70 Shore A supplied assembled.**
The particular configuration of bases and no-slip disks assures a strong assembly, preventing separation in case of strong impact or adhesion with the floor.
- **Two holes** at 180° for ground mounting, covered by breakable plastic diaphragms which can be removed easily by a metal tool. They avoid all unhealthy deposit of dirt and dust when the ground mounting is not required (see assembly instructions).
The levelling elements are **supplied disassembled** in separated packing: less taken volume and best protection from scratches, dirt and corrosion.
- AISI 304 stainless steel **nut** (to be ordered separately see page 512).

To order bases and stems separately, see codes on page 512.

The light V knurling under the lower lip of the levelling element provides excellent **stability and grip** when using the levelling element without the no-slip disk even on surfaces that are not perfectly flat.

The metal parts built with stainless steel AISI 304, thanks to its low sulphur contents (less than 0.030%) make these elements suitable for use on medical machines, equipment for the food and pharmaceutical industry and wherever hygienic, climatic and environmental factors or laws make it mandatory to use corrosion resistant materials.



without no-slip disk		with no-slip disk		Main dimensions				Threaded stem	Articulation	Wrench	Max limit static load*	Weight		
Code	Description	Code	Description	D	L	L1#	l1	d	l	Ø	s	[N]	g	g#
332521	LV.F-100-24-SST-M16x58	335521	LV.F-100-24-AS-SST-M16x58	100	101	104	43	M16	58	24	24	25000	260	314
332525	LV.F-100-24-SST-M16x98	335525	LV.F-100-24-AS-SST-M16x98		141	144		M16	98				312	366
332541	LV.F-100-24-SST-M16x138	335541	LV.F-100-24-AS-SST-M16x138		181	184		M16	138				363	417
332561	LV.F-100-24-SST-M16x158	335561	LV.F-100-24-AS-SST-M16x158		201	204		M16	158				391	445
332625	LV.F-100-24-SST-M20x98	335625	LV.F-100-24-AS-SST-M20x98	100	141	144	43	M20	98	24	24	25000	384	438
332641	LV.F-100-24-SST-M20x138	335641	LV.F-100-24-AS-SST-M20x138		181	184		M20	138				464	518
332661	LV.F-100-24-SST-M20x158	335661	LV.F-100-24-AS-SST-M20x158		201	204		M20	158				504	558
332681	LV.F-100-24-SST-M20x198	335681	LV.F-100-24-AS-SST-M20x198		241	244		M20	198				589	643
332725	LV.F-100-24-SST-M24x98	335725	LV.F-100-24-AS-SST-M24x98	100	141	144	43	M24	98	24	24	25000	484	538
332761	LV.F-100-24-SST-M24x158	335761	LV.F-100-24-AS-SST-M24x158		201	204		M24	158				659	713
332781	LV.F-100-24-SST-M24x198	335781	LV.F-100-24-AS-SST-M24x198		241	244		M24	198				780	834

* "Max. limit static load" means the value over which the applied load to the element, in certain conditions of use, may cause plastic material deformation.

Data with no-slip disk mounted.

LV.F-125

LV.F-125-AS

ELESA original design

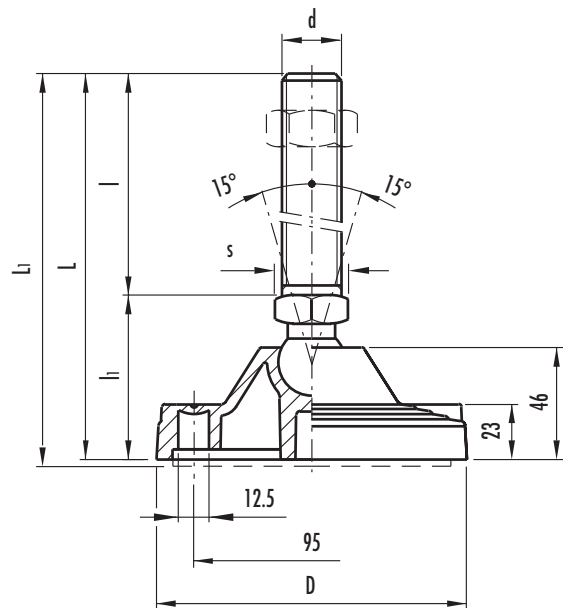
Levelling elements for ground mounting

- **Glass-fibre reinforced polyamide-based (PA) technopolymer base.**
Resistant to solvents, oils, greases and other chemical agents.
- **Black** standard colour with matte finish.
- Zinc-plated steel **articulated and threaded stem.**
- **LV.F type: levelling element without no-slip disk.**
- **LV.F-AS type: levelling element with NBR rubber no-slip disk hardness 70 Shore A supplied assembled.**
The particular configuration of bases and no-slip disks assures a strong assembly, preventing separation in case of strong impact or adhesion with the floor.
- **Two holes** at 180° for ground mounting, covered by breakable plastic diaphragms which can be removed easily by a metal tool. They avoid all unhealthy deposit of dirt and dust when the ground mounting is not required (see assembly instructions on page 505).
The levelling elements are **supplied disassembled** in separated packing: less taken volume and best protection from scratches, dirt and corrosion.
- Zinc-plated steel **nut** (to be ordered separately see page 512).



To order bases and stems separately, see codes on page 512.

The light V knurling under the lower lip of the levelling element provides excellent **stability and grip** when using the levelling element without the no-slip disk even on surfaces that are not perfectly flat.



without no-slip disk		with no-slip disk		Main dimensions				Threaded stem		Articulation	Wrench	Max limit static load*	Weight	
Code	Description	Code	Description	D	L	L1#	l1	d	l	Ø	s	[N]	g	g#
313521	LV.F-125-24-M16x58	316221	LV.F-125-24-AS-M16x58	125	125	128	67	M16	58	24	24	28000	396	521
313525	LV.F-125-24-M16x98	316225	LV.F-125-24-AS-M16x98		165	168		M16	98				447	572
313541	LV.F-125-24-M16x138	316241	LV.F-125-24-AS-M16x138		205	208		M16	138				497	622
313561	LV.F-125-24-M16x158	316261	LV.F-125-24-AS-M16x158		225	228		M16	158				524	649
313625	LV.F-125-24-M20x98	316325	LV.F-125-24-AS-M20x98	125	165	168	67	M20	98	24	24	28000	517	642
313641	LV.F-125-24-M20x138	316341	LV.F-125-24-AS-M20x138		205	208		M20	138				596	721
313661	LV.F-125-24-M20x158	316361	LV.F-125-24-AS-M20x158		225	228		M20	158				635	760
313681	LV.F-125-24-M20x198	316381	LV.F-125-24-AS-M20x198		265	268		M20	198				718	843
313725	LV.F-125-24-M24x98	316425	LV.F-125-24-AS-M24x98	125	165	168	67	M24	98	24	24	28000	615	740
313761	LV.F-125-24-M24x158	316461	LV.F-125-24-AS-M24x158		225	228		M24	158				787	912
313781	LV.F-125-24-M24x198	316481	LV.F-125-24-AS-M24x198		265	268		M24	198				905	1030

* "Max. limit static load" means the value over which the applied load to the element, in certain conditions of use, may cause plastic material deformation.

Data with no-slip disk mounted.



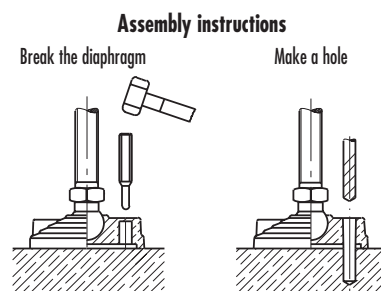
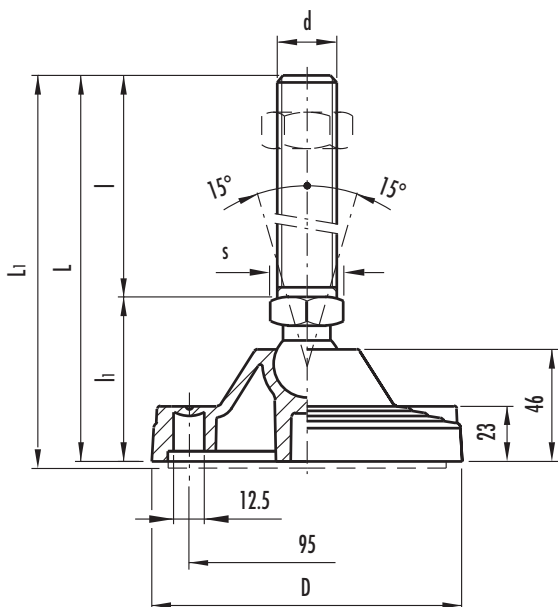
Levelling elements for ground mounting

- **Glass-fibre reinforced polyamide-based (PA) technopolymer base.**
Resistant to solvents, oils, greases and other chemical agents.
- **Black** standard colour with matte finish.
- **AISI 304 stainless steel articulated and threaded stem.**
- **LV.F type: levelling element without no-slip disk.**
- **LV.F-AS type: levelling element with NBR rubber no-slip disk hardness 70 Shore A supplied assembled.**
The particular configuration of bases and no-slip disks assures a strong assembly, preventing separation in case of strong impact or adhesion with the floor.
- **Two holes** at 180° for ground mounting, covered by breakable plastic diaphragms which can be removed easily by a metal tool. They avoid all unhealthy deposit of dirt and dust when the ground mounting is not required (see assembly instructions).
The levelling elements are **supplied disassembled** in separated packing: less taken volume and best protection from scratches, dirt and corrosion.
- AISI 304 stainless steel **nut** (to be ordered separately see page 512).

To order bases and stems separately, see codes on page 512.

The light V knurling under the lower lip of the levelling element provides excellent **stability and grip** when using the levelling element without the no-slip disk even on surfaces that are not perfectly flat.

The metal parts built with stainless steel AISI 304, thanks to its low sulphur contents (less than 0.030%) make these elements suitable for use on medical machines, equipment for the food and pharmaceutical industry and wherever hygienic, climatic and environmental factors or laws make it mandatory to use corrosion resistant materials.



without no-slip disk		with no-slip disk		Main dimensions				Threaded stem	Articulation	Wrench	Max limit static load*	Weight		
Code	Description	Code	Description	D	L	L1#	l1	d	l	Ø	s	[N]	g	g#
333521	LV.F-125-24-SST-M16x58	336221	LV.F-125-24-AS-SST-M16x58	125	125	128	67	M16	58	24	24	28000	399	524
333525	LV.F-125-24-SST-M16x98	336225	LV.F-125-24-AS-SST-M16x98		165	168		M16	98				451	576
333541	LV.F-125-24-SST-M16x138	336241	LV.F-125-24-AS-SST-M16x138		205	208		M16	138				502	627
333561	LV.F-125-24-SST-M16x158	336261	LV.F-125-24-AS-SST-M16x158		225	228		M16	158				530	655
333625	LV.F-125-24-SST-M20x98	336325	LV.F-125-24-AS-SST-M20x98	125	165	168	67	M20	98	24	24	28000	523	648
333641	LV.F-125-24-SST-M20x138	336341	LV.F-125-24-AS-SST-M20x138		205	208		M20	138				603	728
333661	LV.F-125-24-SST-M20x158	336361	LV.F-125-24-AS-SST-M20x158		225	228		M20	158				643	768
333681	LV.F-125-24-SST-M20x198	336381	LV.F-125-24-AS-SST-M20x198		265	268		M20	198				728	853
333725	LV.F-125-24-SST-M24x98	336425	LV.F-125-24-AS-SST-M24x98	125	165	168	67	M24	98	24	24	28000	623	748
333761	LV.F-125-24-SST-M24x158	336461	LV.F-125-24-AS-SST-M24x158		225	228		M24	158				798	923
333781	LV.F-125-24-SST-M24x198	336481	LV.F-125-24-AS-SST-M24x198		265	268		M24	198				919	1044

* "Max. limit static load" means the value over which the applied load to the element, in certain conditions of use, may cause plastic material deformation.

Data with no-slip disk mounted.