

Crank handles

- **Glass-fibre reinforced polyamide based (PA) technopolymer.**
Resistant to solvents, oils, greases and other chemical agents.
- **Black** standard colour with matte finish.
- Black oxide **steel hub** with:
 - H9 tolerance blind hole
 - H7 tolerance reamed through hole.
- Self-adhesive matte anodised **aluminium front plate** for fitting after crank handle assembly.
- Polypropylene based (PP) **revolving handle** type 1.601+x (page 268).
- **Axial retaining washer** (on request) type GN 184 (page 452).

The reticular structure of the crank arm and special technopolymer used make this handle very strong and therefore suitable for heavy duty work.

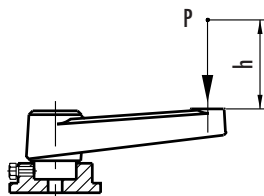


This product has been selected for its design by the international jury of "Die gute Industrieform-Hannover 1979"

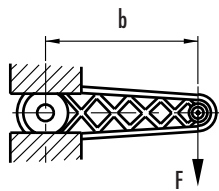
design80



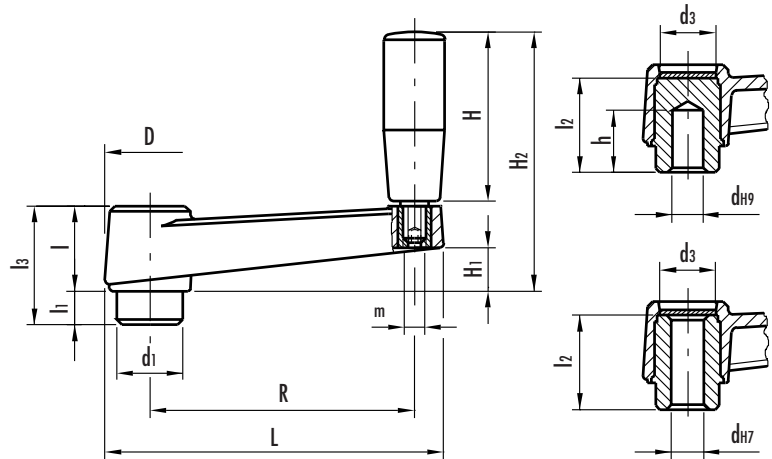
This product has been selected for its design by the international jury of "Design 1980-Stuttgart"



$$L [J] = P [N] \cdot h [m]$$



$$C [N \cdot m] = F [N] \cdot b [m]$$



See Technical Data for maximum applicable torque (C) and impact strength (L).

Standard elements		Main dimensions										Mounting hole				Handle		C	L	Weight
Code	Description	R	L	D	d1	d3	l	l1	l3	H1	H2	d H7	d H9	l2	h	H	m	[N·m]	[J]	grams
44051	MT.50 A-6	50	69	23	16	13	21	10	31	10	49	6	-	28	-	28	-	60	7	65
44091 44101	MT.64 MT.64 A-8	64	86	27	18	16	23	10	33	10	63	- 8	6 -	29 -	18 -	40	M6	120	11	100 95
44191 44201	MT.80 MT.80 A-10	80	105	30	22	17	26	10	36	13	76	- 10	6 -	32 -	26 -	50	M6	180	15	145 130
44291 44301	MT.100 MT.100 A-12	100	128	34	24	21	30	10	40	15	96	- 12	8 -	37 -	28 -	65	M8	200	27	240 225
44391 44401	MT.130 MT.130 A-14	130	162	40	28	25	35	14	49	20	115	- 14	10 -	44 -	30 -	80	M8	350	45	345 310
44491 44501	MT.160 MT.160 A-16	160	198	45	34	27	40	15	55	23	130	- 16	10 -	49 -	30 -	90	M10	450	55	495 435
44601	MT.210	212	252	50	40	31	45	15	60	26	136	-	12	53	30	90	M10	950	80	705