

# MT-AT+IR

ELESA Original design

## Crank handles with fold-away handle



- **Material**

Glass-fibre reinforced polyamide based (PA) technopolymer. Resistant to solvents, oils, greases and other chemical agents.

- **Colour**

Black, matte finish.

- **Assembly**

H7 reamed black-oxide steel boss.

- **Fold-away handle**

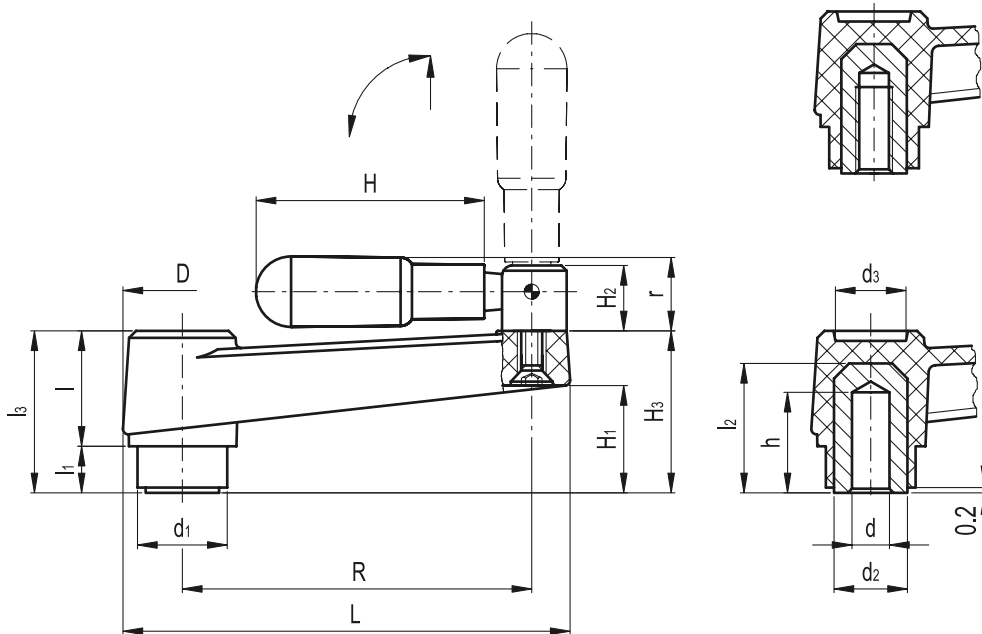
Type IR.620 polyamide based (PA) technopolymer, black colour, matte finish.

### Features and applications

The reticular structure of the crank arm and the technopolymer used make this handle very strong and therefore suitable for transmitting high torque values.

**Special executions on request** (for sufficient quantities)

Threaded brass boss.



Standard Elements		Main dimensions											Mounting hole		Handle			$\Delta$	
Code	Description	R	L	D	d <sub>1</sub>	d <sub>3</sub>	l	l <sub>1</sub>	l <sub>3</sub>	d <sub>2</sub>	l <sub>2</sub>	H <sub>1</sub>	H <sub>3</sub>	d H7	h	H	H <sub>2</sub>	r	g
44117	MT.64-AT+IR	64	86	27	20	16	23	9	32	15	25	18.5	32	8	20	45	14	15	100
44217	MT.80-AT+IR	80	105	30	23.5	17	26	10	36	18	31	23	37	10	25	60	14	16.5	122
44317	MT.100-AT+IR	100	128	34	24	21	30	10	40	18	31	24.5	39	12	24	65	14	16.5	185
44417	MT.130-AT+IR	130	162	40	34	25	35	14	49	26	43	34	49.5	14	30	65	18.5	20.5	240
44517	MT.160-AT+IR	160	197	45	34	27	40	15	55	26	43	38	55.5	16	30	80	18.5	21.5	330