

# MT+IR

ELESA original design

## Crank handles with fold-away handle

- **Glass-fibre reinforced polyamide based (PA) technopolymer.**  
Resistant to solvents, oils, greases and other chemical agents.
- **Black** standard colour with matte finish.
- Black oxide **steel hub** with:
  - H9 tolerance blind hole
  - H7 tolerance reamed through hole.
- Self-adhesive matte anodised **aluminium front plate** for fitting after crank handle assembly.
- Polypropylene based (PP) technopolymer **fold-away handle** type IR.602.
- **Axial retaining washer** (on request) type GN 184 (page 452).



The reticular structure of the crank arm and special technopolymer used make this handle very strong and therefore suitable for heavy duty work.

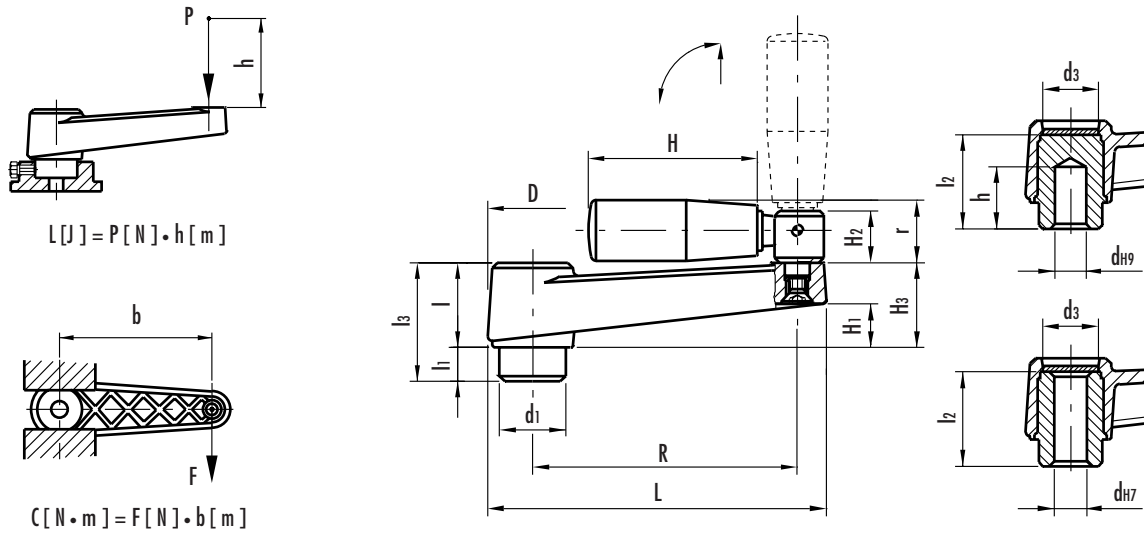


This product has been selected for its design by the international jury of "Die gute Industrieform-Hannover 1979"

design80



This product has been selected for its design by the international jury of "Design 1980-Stuttgart"



See Technical Data for maximum applicable torque (C) and impact strength (L).

Standard elements		Main dimensions											Mounting hole				Handle		C	L	Weight
Code	Description	R	L	D	d1	d3	l	l1	l3	H1	H3	r	d H7	d H9	l2	h	H	H2	[N·m]	[J]	grams
44216 44221	MT.80+IR MT.80+IR A-10	80	105	30	22	17	26	10	36	13	27	19	- 10	6 -	32	26 -	56	15	180	15	177 163
44316 44321	MT.100+IR MT.100+IR A-12	100	128	34	24	21	30	10	40	15	31	22	- 12	8 -	37	28 -	65	20	200	27	285 265
44416 44421	MT.130+IR MT.130+IR A-14	130	162	40	28	25	35	14	49	20	35	22	- 14	10 -	44	30	65	20	350	45	385 340
44516 44521	MT.160+IR MT.160+IR A-16	160	198	45	34	27	40	15	55	23	40	24	- 16	10 -	49	30	80	20	450	55	525 473
44621	MT.210+IR	212	252	50	40	31	45	15	60	26	46	27	-	12	53	30	90	23	950	80	840