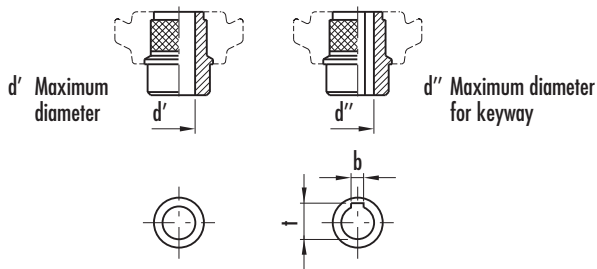


# VD.FP

ELESA original design

## Solid handwheels

- **High strength, reinforced phenolic-based (PF) Duroplast.**  
Resistant to solvents, oils, greases and other chemical agents.
- **Black** standard colour with glossy finish.
- Black oxide **steel hub** with uncovered front end not drilled or with standard H7 tolerance reamed holes.



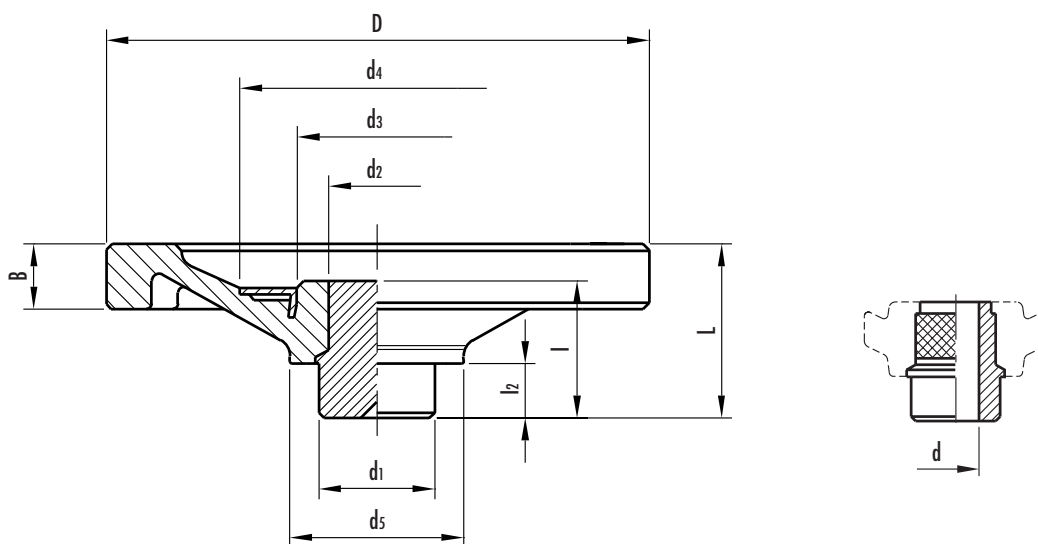
- Matte anodised **aluminium ring** (ELESA original design). Centre disc for  $\varnothing$  50 and  $\varnothing$  63 mm models.
- **Rim** with rear finger grips (from  $\varnothing$  125 to  $\varnothing$  350 mm).
- **Axial retaining washer** (on request) type GN 184 (page 452).



This product has been selected for its design by the international jury of "Die gute Industrieform-Hannover 1977"



Photo Omar srl (Gruppo Braibanti)



See Technical Data for maximum applicable torque (C) and impact strength (L).

Standard elements		Main dimensions										Bore	Boring diameters				C	L	Weight
Code	Description	D	L	B	d1	d2	d3	d4	d5	l	l2	d H7	d'	d''	t	b	[N·m]	[J]	grams
70101 70105	VD.50 FP VD.50 FP-A-10	50	22	12	16	16	-	25	26	19	9	- 10	12	10	11.4	3	55	3	60 50
70201 70205	VD.63 FP VD.63 FP-A-10	63	28	13	20	20	-	31	28	24	10	- 10	13	11	12.8	4	75	4	115 100
70301 70305 70307	VD.80 FP VD.80 FP-A-10 VD.80 FP-A-12	80	31	14	20	16	28	43	30	28	10	- 10 12	13	11	12.8	4	90	8	145 120 115
70401 70405 70407	VD.100 FP VD.100 FP-A-10 VD.100 FP-A-12	100	40	15	24	20	35	54	39	36	12	- 10 12	16	13	15.3	5	150	11	260 230 225
70501 70505 70507	VD.125 FP VD.125 FP-A-12 VD.125 FP-A-14	125	44	15	32	24	44	70	46	38	15	- 12 14	20	16	18.3	5	300	14	380 335 330
70601 70605	VD.140 FP VD.140 FP-A-14	140	46	18	32	24	44	70	48	38	15	- 14	20	16	18.3	5	300	19	465 430
70701 70703 70705	VD.150 FP VD.150 FP-A-14 VD.150 FP-A-16	150	48	18	32	24	44	70	48	38	15	- 14 16	20	16	18.3	5	300	19	510 465 460
70801 70803 70805	VD.175 FP VD.175 FP-A-16 VD.175 FP-A-18	175	53	19	40	31	55	90	56	43	15	- 16 18	26	22	24.8	6	500	27	765 705 700
70901 70905 70907	VD.200 FP VD.200 FP-A-18 VD.200 FP-A-20	200	57	21	40	31	55	90	60	43	15	- 18 20	26	22	24.8	6	700	36	970 935 900
71001	VD.225 FP	225	61	23	49	38	66	110	66	44	15	-	34	27	30.3	8	900	36	1340
71101 71105	VD.250 FP VD.250 FP-A-22	249	65	25	49	38	66	110	70	44	15	- 22	35	27	30.3	8	1300	40	1520 1390
71201 71205	VD.300 FP VD.300 FP-A-26	301	75	25	58	58	94	148	82	56	18	- 26	42	38	41.3	10	1500	48	2920 2685
71301	VD.350 FP	350	92	38	58	58	94	148	90	56	18	-	42	38	41.3	10	1600	65	3960