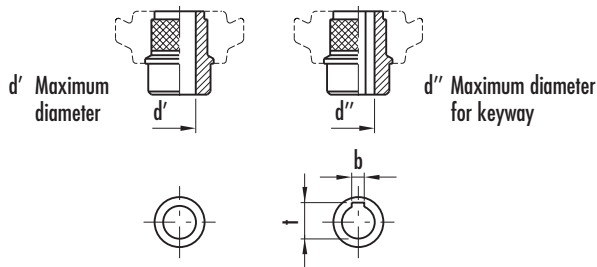


# VD.FP+I

ELESA original design

## Solid handwheels with revolving handle

- **High-strength, reinforced phenolic-based (PF) Duroplast.** Resistant to solvents, oils, greases and other chemical agents.
- **Black** standard colour with glossy finish.
- Black oxide **steel hub** with uncovered front end not drilled or with standard H7 reamed holes.



- Matte anodised **aluminium ring** (ELESA original design). Centre disc for Ø 50 and Ø 63 mm models.
- Duroplast **revolving handle** type I.301+x (page 267).
- **Rim** with rear finger grips (from Ø 125 to Ø 350 mm).
- **Axial retaining washer** (on request) type GN 184 (page 452).

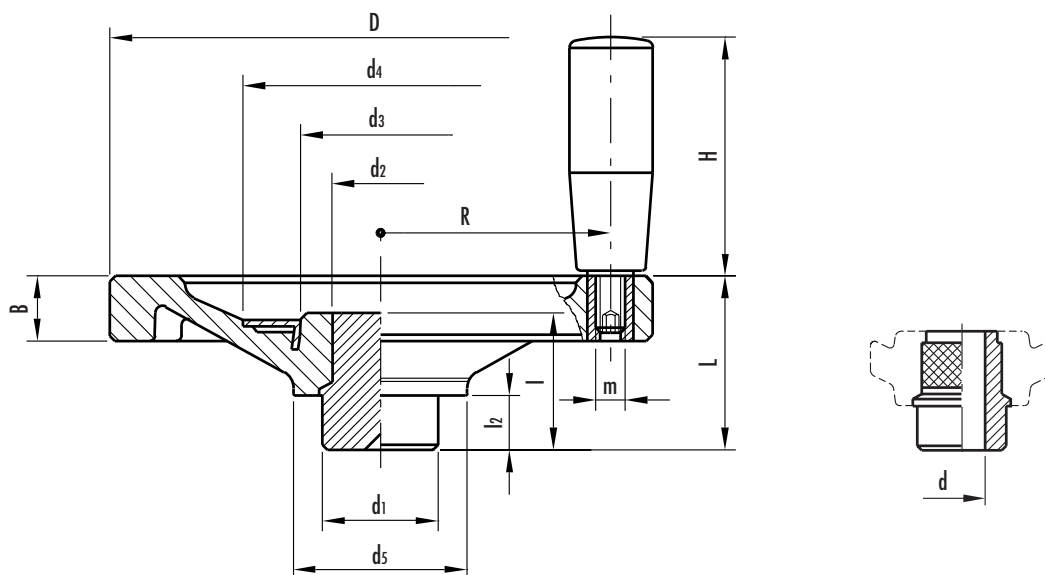
Special type (on request) VD.FP+I+VW with counterweights (for models from Ø 175 to Ø 250 mm).



This product has been selected for its design by the international jury of "Die gute Industrieform-Hannover 1977"



Photo Okamoto Ltd.



See Technical Data for maximum applicable torque (C) and impact strength (L).

Standard elements		Main dimensions										Bore	Handle			Boring diameters				C	L	Weight
Code	Description	D	L	B	d <sub>1</sub>	d <sub>2</sub>	d <sub>3</sub>	d <sub>4</sub>	d <sub>5</sub>	l	l <sub>2</sub>	d H7	H	m	R	d'	d''	t	b	[N·m]	[J]	grams
70111 70115	VD.50 FP+I VD.50 FP+I-A-10	50	22	12	16	16	-	25	26	19	9	- 10	28	M6	19	12	10	11.4	3	55	3	75 65
70211 70215	VD.63 FP+I VD.63 FP+I-A-10	63	28	13	20	20	-	31	28	24	10	- 10	40	M6	24	13	11	12.8	4	75	4	145 130
70321 70325 70327	VD.80 FP+I VD.80 FP+I-A-10 VD.80 FP+I-A-12	80	31	14	20	16	28	43	30	28	10	- 10 12	40	M6	32	13	11	12.8	4	90	8	180 155 145
70421 70425 70427	VD.100 FP+I VD.100 FP+I-A-10 VD.100 FP+I-A-12	100	40	15	24	20	35	54	39	36	12	- 10 12	50	M6	41	16	13	15.3	5	150	11	300 270 260
70521 70525 70527	VD.125 FP+I VD.125 FP+I-A-12 VD.125 FP+I-A-14	125	44	15	32	24	44	70	46	38	15	- 12 14	65	M8	53	20	16	18.3	5	300	14	465 415 405
70621 70625	VD.140 FP+I VD.140 FP+I-A-14	140	46	18	32	24	44	70	48	38	15	- 14	65	M8	60	20	16	18.3	5	300	19	530 500
70711 70713 70715	VD.150 FP+I VD.150 FP+I-A-14 VD.150 FP+I-A-16	150	48	18	32	24	44	70	48	38	15	- 14 16	65	M8	64	20	16	18.3	5	300	19	580 540 530
70821 70823 70825	VD.175 FP+I VD.175 FP+I-A-16 VD.175 FP+I-A-18	175	53	19	40	31	55	90	56	43	15	- 16 18	80	M10	75	26	22	24.8	6	500	27	850 810 800
70921 70925 70927	VD.200 FP+I VD.200 FP+I-A-18 VD.200 FP+I-A-20	200	57	21	40	31	55	90	60	43	15	- 18 20	90	M10	86	26	22	24.8	6	700	36	1080 1045 1020
71021	VD.225 FP+I	225	61	23	49	38	66	110	66	44	15	-	90	M10	99	34	27	30.3	8	900	36	1430
71121 71125	VD.250 FP+I VD.250 FP+I-A-22	249	65	25	49	38	66	110	70	44	15	- 22	90	M10	109	35	27	30.3	8	1300	40	1630 1510
71221 71225	VD.300 FP+I VD.300 FP+I-A-26	301	75	25	58	58	94	148	82	56	18	- 26	90	M10	134	42	38	41.3	10	1500	48	3020 2805
71311	VD.350 FP+I	350	92	38	58	58	94	148	90	56	18	-	100	M10	157	42	38	41.3	10	1600	65	4100