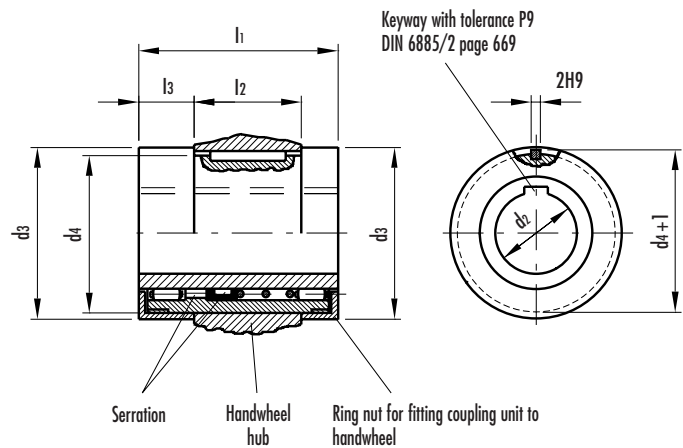
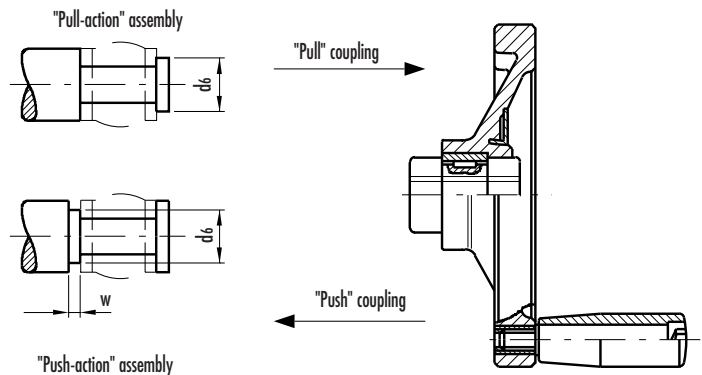
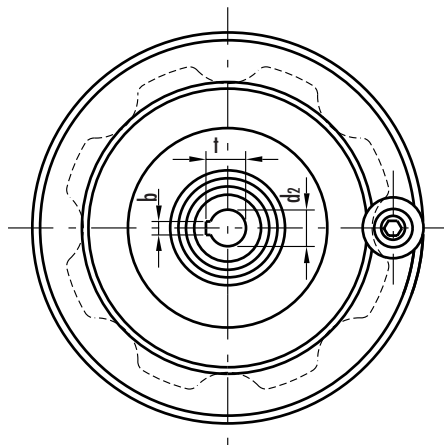
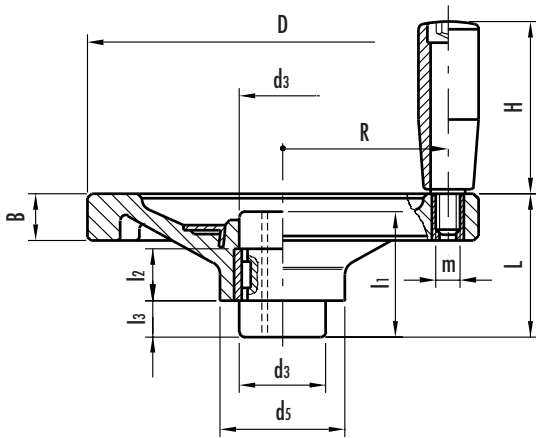


Safety handwheels with revolving handle

- **High strength, reinforced phenolic based (PF) Duroplast.**
Resistant to solvents, oils, greases and other chemical agents.
- **Black** standard colour with glossy finish.
- Hardened steel **safety coupling** unit on needle bearings type GN 000.5 with standard H7 reamed holes and keyway in conformity with DIN6885/2 page 669 and tolerance P9.
- Matte anodised **aluminium ring** (ELESA original design) useful for engraving marks, words, arrows...
- Duroplast **revolving handle** type 1.281+x (page 272).

In accordance with safety regulations ELESA VD.FP+I+ST safety handwheels are disengaged in the rest position to avoid them from being accidentally engaged if pressure is put on the axle; when the handwheel is "pulled" parallel to the axle two serrated locking elements engage so that the handwheel is coupled to the shaft.

The handwheel returns to the rest position automatically after operation. On request and for sufficient quantity, can be supplied with the "Push-action". In this case the locking elements engage when the handwheel is pushed parallel to the axle.



Standard elements		Main dimensions										Bore				Handle			Weight
Code	Description	D	L	B	d3	d4. _{0.03}	d5	d6 max.	l2 ±0.2	l3	w min.	d2 H7	t	b	l1	H	m	R	grams
70551	VD.125 FP+I+ST 12	125	45	15	29	25	46	17	18	12	4	12	13.1	4	42	65	M8	53	465
70751	VD.150 FP+I+ST 14	150	55	18	33	29	48	21	20	14	4	14	15.3	5	48	65	M8	64	650
70851	VD.175 FP+I+ST 14	175	56	19	33	29	56	21	20	14	4	14	15.3	5	48	80	M10	75	810
70951	VD.200 FP+I+ST 18	200	61	21	39	35	60	26	24	13	4	18	19.7	6	50	90	M10	86	1220
71151	VD.250 FP+I+ST 22	249	71	25	46	41	70	30	28	13	4	22	23.7	6	54	90	M10	109	1670