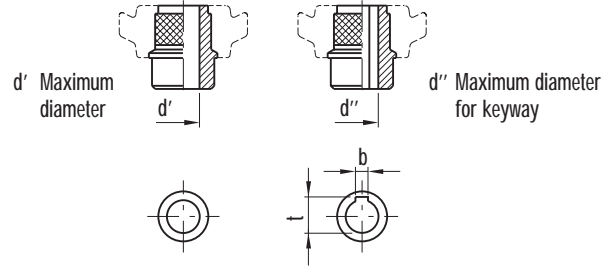


Solid handwheels



- **High strength, reinforced phenolic-based (PF) Duroplast.** Resistant to solvents, oils, greases and other chemical agents.
- **Black** standard colour with glossy finish.
- Black oxide **steel hub** with uncovered front end not drilled. See table for maximum permissible boring diameters d' and d'' .

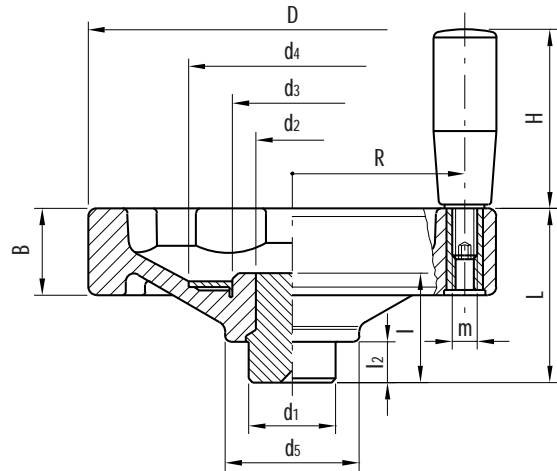
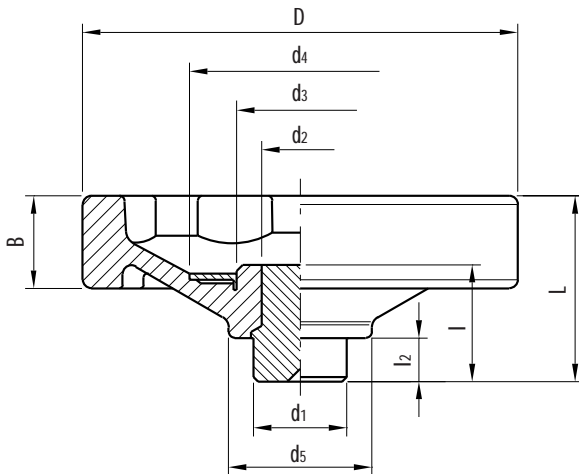


- Matte anodised **aluminium ring** (ELESA original design) useful for engraving marks, words, arrows...
- **Revolving handle** type I.301+x (page 267) for VDO.FP+I.
- **Rim** with front and rear finger grips to grip and turn handwheel more easily even from side positions.
- **Axial retaining washer** (on request) type GN 184 (page 452).

On request only for handwheels with revolving handle (type VDO.FP+I) special type with counterweights VDO.FP+I+W is available for diameters from \varnothing 175 to \varnothing 250 mm.



This product has been selected for its design by the international jury of "Die gute Industrieform-Hannover 1980"



See Technical Data for maximum applicable torque (C) and impact strength (L).

Standard elements		Main dimensions										Boring diameters				C	L	Weight
Code	Description	D	L	B	d1	d2	d3	d4	d5	l	l2	d'	d''	t	b	[N·m]	[J]	grams
72001	VDO.125 FP	125	60	30	32	24	44	70	46	38	15	20	16	18.3	5	450	28	490
72101	VDO.150 FP	150	63	32	32	24	44	70	48	38	15	20	16	18.3	5	480	30	630
72201	VDO.175 FP	178	65	32	40	31	55	90	56	43	15	26	22	24.8	6	730	40	930
72301	VDO.200 FP	201	70	34	40	31	55	90	60	43	15	26	22	24.8	6	1060	42	1160
72401	VDO.225 FP	227	74	35	49	38	66	110	66	44	15	34	27	30.3	8	1340	45	1540
72501	VDO.250 FP	249	77	36	49	38	66	110	70	44	15	34	27	30.3	8	1700	46	1740

Standard elements		Main dimensions										Handle			Boring diameters				C	L	Weight
Code	Description	D	L	B	d1	d2	d3	d4	d5	l	l2	H	m	R	d'	d''	t	b	[N·m]	[J]	grams
72011	VDO.125 FP+I	125	60	30	32	24	44	70	46	38	15	65	M8	47	20	16	18.3	5	450	28	555
72111	VDO.150 FP+I	150	63	32	32	24	44	70	48	38	15	65	M8	58	20	16	18.3	5	480	30	695
72211	VDO.175 FP+I	178	65	32	40	31	55	90	56	43	15	80	M10	66	26	22	24.8	6	730	40	1015
72311	VDO.200 FP+I	201	70	34	40	31	55	90	60	43	15	90	M10	77	26	22	24.8	6	1060	42	1275
72411	VDO.225 FP+I	227	74	35	49	38	66	110	66	44	15	90	M10	99	34	27	30.3	8	1340	45	1655
72511	VDO.250 FP+I	249	77	36	49	38	66	110	70	44	15	90	M10	101	34	27	30.3	8	1700	46	1845