

## Solid handwheels

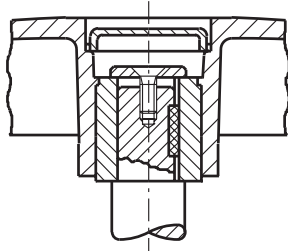
- **High-impact strength polypropylene-based (PP) technopolymer.**  
Resistant to solvents, oils, greases and other chemical agents.
- **Black** standard colour with matte finish.
- Black oxide **steel boss** with standard H7 tolerance reamed holes.
- Light grey acetal-based (POM) technopolymer push-fit **boss cap** removable by pressing on outer edge.
- **Rear finger grips.**
- **Axial retaining washer** (on request) type GN 184 (page 452).



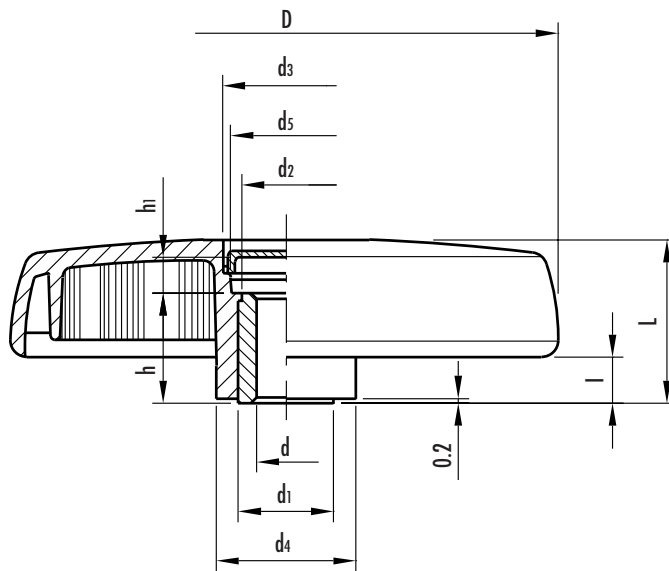
This product has been selected for its design by the international jury of "Die gute Industrieform-Hannover 1985"



This product has been selected for its design by the international jury of "XIV PREMIO Compasso d'oro-Milano 1987"



Assembly example with key and axial set screw



See Technical Data for maximum applicable torque (C) and impact strength (L).

Standard elements		Main dimensions									Bore		C	L	Weight
Code	Description	D	L	l	d1	d2	d3	d4	d5	h1	d H7	h	[N•m]	[J]	grams
72661	VDS.100 A-10	102	34	10	22	20	27	30	25	9	10	22	60	13	140
72662	VDS.100 A-12										12				
72741	VDS.150 A-14	150	44	12	26	24	34	38	30	10	14	30	180	26	315
72841	VDS.200 A-20	200	53	14	40	38	44	50	40	13	20	36	320	27	590