

VDT+IR

ELESA original design

Solid handwheels with fold-away handle

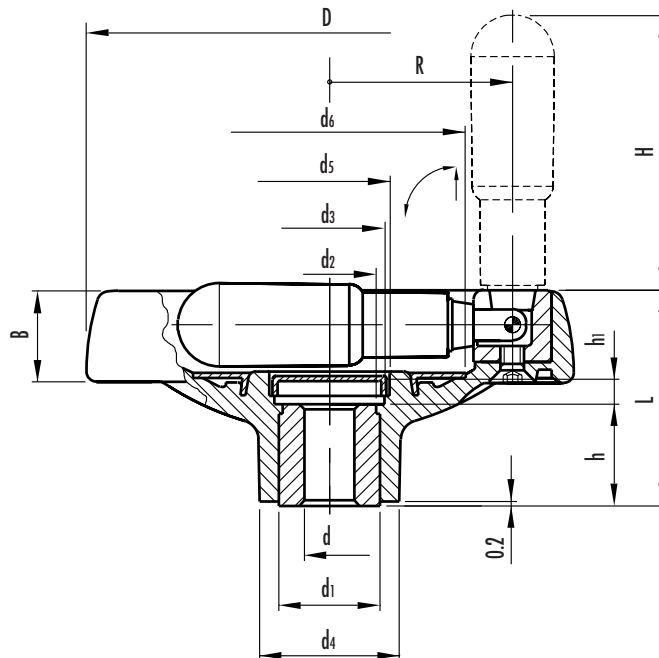
- **Glass-fibre reinforced polyamide based (PA) technopolymer.**
Resistant to solvents, oils, greases and other chemical agents.
- **Black** standard colour with matte finish.
- Black oxide **steel boss** with standard H7 tolerance reamed hole.
- Acetal resin based (POM) black technopolymer press-fit **boss cap** removable by pressing on the out side edge.
- Matte anodised **aluminium ring** (ELESA original design).
- **Rear finger grips.**
- Technopolymer **fold-away handle** type IR.620 (page 279).
- **Axial retaining washer** (on request) type GN 184 (page 452).



This product has been selected for its design by the international jury of "Die gute Industrieform-Hannover 2003"

design award
winner
2003

Operating elements



See Technical Data for maximum applicable torque (C) and impact strength (L).

Standard elements		Main dimensions										Bore		Handle		C	L	Weight
Code	Description	D	L	B	d1	d2	d3	d4	d5	d6	h1	d H7	h	H	R	[N·m]	[J]	grams
170327	VDT.100+IR A-10	100	49	22	22	20	26	32	28	54	5.5	10	22	60	37	180	21	195
170525	VDT.125+IR A-12	125	57	24	26	24	28	36	31	70	7	12	27	65	47	200	23	365
170727	VDT.160+IR A-14	160	64	27	35	33	38	46	40	90	11	14	28	80	62	400	25	600
170927	VDT.200+IR A-20	200	68	30	40	36	50	51	52	110	9	20	31	90	78	600	35	875



"ELESA" and "GANTERGRIF" models all rights reserved in accordance with the law. Always mention the source when reproducing our drawings.