

LV.F-125-APS LV.F-125-APS-AS

ELESA original design



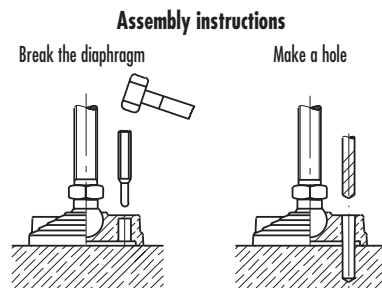
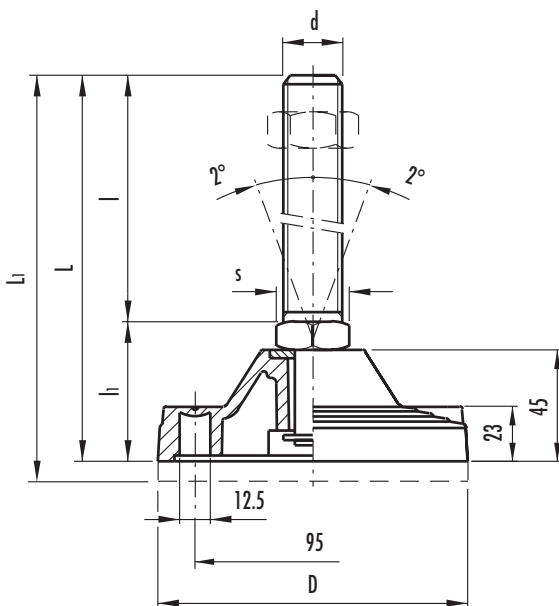
Levelling elements for ground mounting

- **Glass-fibre reinforced polyamide-based (PA) technopolymer base.**
Resistant to solvents, oils, greases and other chemical agents.
- **Black** standard colour with matte finish.
- Zinc-plated steel **threaded through stem.**
- Steel stem retaining **ring** and zinc-plated steel supporting plain washer.
- **LV.F type: levelling element without no-slip disk.**
- **LV.F-AS type: levelling element with NBR rubber no-slip disk hardness 90 Shore A supplied assembled reinforced with a zinc-plated steel disk and fastened by means of two self-tapping screws.**
The particular configuration of bases and no-slip disks assures a strong assembly, preventing separation in case of strong impact or adhesion with the floor.
- **Two holes** at 180° for ground mounting, covered by breakable plastic diaphragms which can be removed easily by a metal tool. They avoid all unhealthy deposit of dirt and dust when the ground mounting is not required (see assembly instructions).
The levelling element is **supplied assembled**. To prevent them from disengagement in case of shocks, the stem is fixed to the base by means of a retaining ring.

- Zinc-plated steel **nut** (to be ordered separately).

On request and for sufficient quantities they are available with AISI 304 stainless steel stems.

The light V knurling under the lower lip of the levelling element provides excellent **stability and grip** when using the levelling element without the no-slip disk even on surfaces that are not perfectly flat.



without no-slip disk		with no-slip disk		Main dimensions				Threaded stem	Wrench	Max limit static load*	Weight		
Code	Description	Code	Description	D	L	L1#	l1	d	l	s	[N]	g	g#
313961	LV.F-125-APS-M20x95	316961	LV.F-125-APS-AS-M20x95	125	150	160	55	M20	95	24	40000	470	720
313965	LV.F-125-APS-M20x155	316965	LV.F-125-APS-AS-M20x155		210	220		M20	155			590	840
313971	LV.F-125-APS-M24x95	316971	LV.F-125-APS-AS-M24x95	125	150	160	55	M24	95	24	40000	625	875
313975	LV.F-125-APS-M24x155	316975	LV.F-125-APS-AS-M24x155		210	220		M24	155			740	990
313985	LV.F-125-APS-M30x155	316985	LV.F-125-APS-AS-M30x155	125	210	220	55	M30	155	30	40000	930	1180

* "Max. limit static load" means the value over which the applied load to the element, in certain conditions of use, may cause plastic material deformation.

Data with no-slip disk mounted.