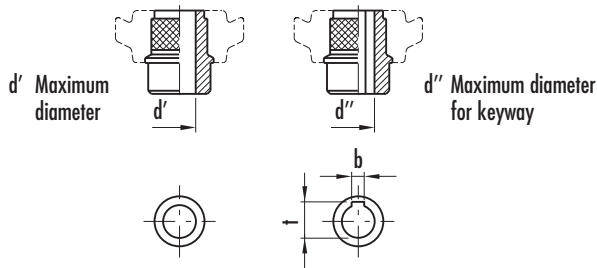
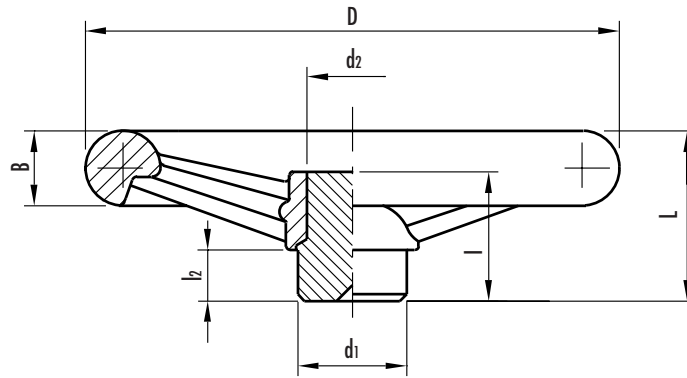


Three-spoke handwheels

- **High strength, reinforced, phenolic-based (PF) Duroplast.**
Resistant to solvents, oils, greases and other chemical agents.
- **Black** standard colour with glossy finish.
- Black oxide **steel hub** with uncovered front end not drilled. See table for maximum permissible boring diameter d' and d'' .



- **Conform** to UNI 6963-71 Form A type 2.
- **Axial retaining washer** (on request) type GN 184 (page 452).



See Technical Data for maximum applicable torque (C) and impact strength (L).

Standard elements		Main dimensions							Boring diameters				C	L	Weight
Code	Description	D	L	B	d_1	d_2	l	l_2	d'	d''	t	b	[N•m]	[J]	grams
77111	VR.100 FP	98	40	14	24	20	36	12	16	13	15.3	5	67	5	175
77211	VR.125 FP	124	45	18	24	20	36	12	16	13	15.3	5	120	8	240
77311	VR.140 FP	139	47	20	32	24	38	15	20	16	18.3	5	165	12	390
77411	VR.160 FP	157	50	22	32	24	38	15	20	16	18.3	5	165	12	455
77511	VR.180 FP	180	56	24	40	31	43	15	26	22	24.8	6	280	15	700
77611	VR.200 FP	198	56	24	40	31	43	15	26	22	24.8	6	300	16	750
77711	VR.250 FP	247	66	30	49	38	44	15	34	27	30.3	8	405	19	1235
77811	VR.300 FP	288	78	32	58	47	56	18	42	34	37.3	10	800	33	2060
77901	VR.375 FP	375	108	40	58	58	77	26	45	40	43.3	12	1450	70	3900