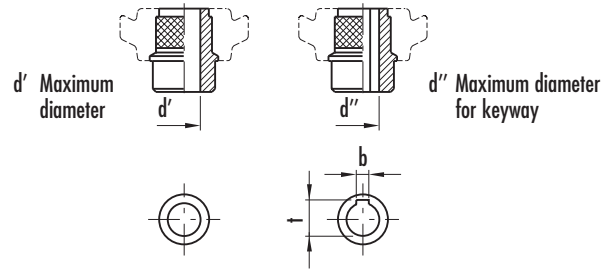
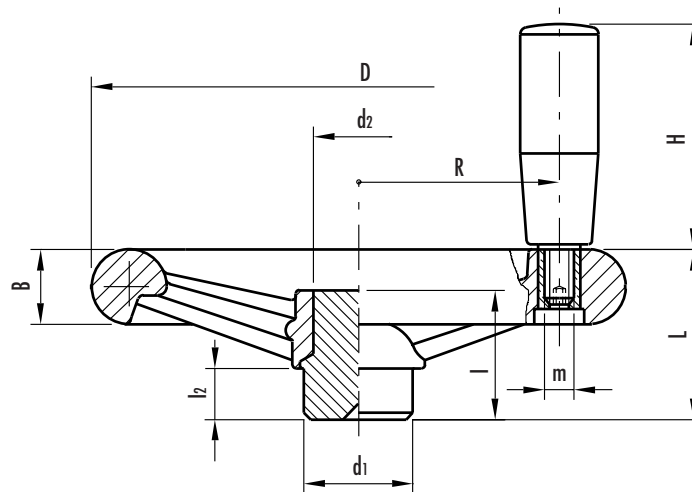


Three-spoke handwheels with revolving handle

- **High strength, reinforced, phenolic-based (PF) Duroplast.** Resistant to solvents, oils, greases and other chemical agents.
- **Black** standard colour with glossy finish.
- Black oxide **steel hub** with uncovered front end not drilled. See table for maximum permissible boring diameter d' and d'' .



- Duroplast **revolving handle** type I.301+x (page 267).
- **Conform** to UNI 6963-71 Form B type 2.
- **Axial retaining washer** (on request) type GN 184 (page 452).



See Technical Data for maximum applicable torque (C) and impact strength (L).

Standard elements		Main dimensions							Handle			Boring diameters				C	L	Weight
Code	Description	D	L	B	d ₁	d ₂	l	l ₂	H	m	R	d'	d''	t	b	[N•m]	[J]	grams
77121	VR.100 FP+I	98	40	14	24	20	36	12	40	M6	37	16	13	15.3	5	67	5	205
77221	VR.125 FP+I	124	45	18	24	20	36	12	50	M8	47	16	13	15.3	5	120	8	300
77321	VR.140 FP+I	139	47	20	32	24	38	15	65	M8	53	20	16	18.3	5	165	12	475
77421	VR.160 FP+I	157	50	22	32	24	38	15	65	M8	59	20	16	18.3	5	165	12	540
77521	VR.180 FP+I	180	56	24	40	31	43	15	80	M10	68	26	22	24.8	6	280	15	830
77621	VR.200 FP+I	198	56	24	40	31	43	15	80	M10	76	26	22	24.8	6	300	16	880
77721	VR.250 FP+I	247	66	30	49	38	44	15	90	M10	98	34	27	30.3	8	405	19	1420
77821	VR.300 FP+I	288	78	32	58	47	56	18	100	M12	113	42	34	37.3	10	800	33	2335
77911	VR.375 FP+I	375	108	40	58	58	77	26	100	M12	160	45	40	43.3	12	1450	70	4170