

## Two-spoke handwheels

- **High-impact strength polypropylene-based (PP) technopolymer.**  
Resistant to solvents, oils, greases and other chemical agents.
- **Black** standard colour with matte finish.
- Black oxide **steel boss** with standard H7 tolerance reamed holes.
- Self-adhesive, matte anodised **aluminium central plate** for fitting after handwheel assembly.
- **Ergonomically shaped rim** for a safer and more comfortable grip.
- **Axial retaining washer** (on request) type GN 184 (page 452).



Operating elements

1  
40

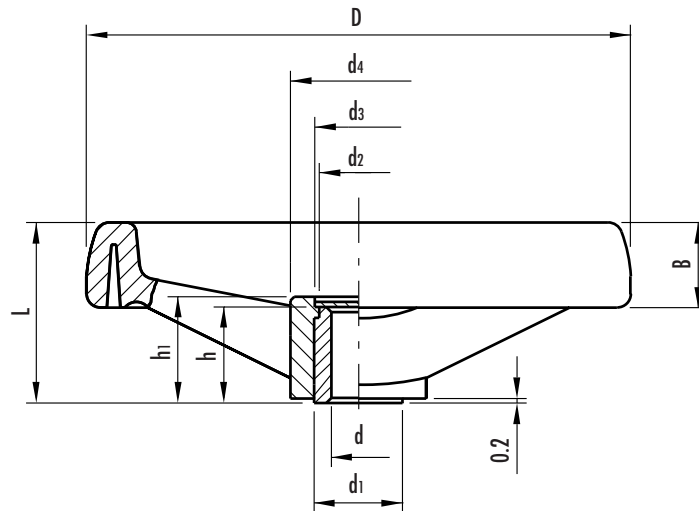


This product has been selected for its design by the international jury of "Die gute Industrieform-Hannover 1981"

design81



This product has been selected for its design by the international jury of "Design 1981-Stuttgart"



See Technical Data for maximum applicable torque (C) and impact strength (L).

Standard elements		Main dimensions								Bore		C	L	Weight
Code	Description	D	L	B	d1	d2	d3	d4	h1	d H7	h	[N•m]	[J]	grams
78411 78412	VRTP.80 A-8 VRTP.80 A-10	80	35	18	18	16	17	23	19	8 10	17	32	5	74 70
78511 78512	VRTP.100 A-10 VRTP.100 A-12	99	37	20	18	16	17	25	19	10 12	17	54	7	100 95
78611 78612	VRTP.125 A-12 VRTP.125 A-14	124	44	22	22	20	21	31	25	12 14	22	94	10	160 155
78711 78712	VRTP.160 A-14 VRTP.160 A-16	160	51	25	26	24	25	40	29	14 16	27	185	15	275 263
78811 78813	VRTP.200 A-16 VRTP.200 A-20	200	61	28	30	28	31	50	36	16 20	34	300	24	460 430
78911 78913	VRTP.250 A-20 VRTP.250 A-24	249	70	32	35	33	34	59	40	20 24	38	420	28	730 710
78948 78951	VRTP.300 A-20 VRTP.300 A-26	298	78	36	40	37	42	66	46	20 26	43	480	36	940 970
79011	VRTP.375 A-26	373	82	38	40	37	42	69	46	26	43	480	40	1185