

Two-spoke handwheels with revolving handle

- **High-impact strength polypropylene-based (PP) technopolymer.**
Resistant to solvents, oils, greases and other chemical agents.
- **Black** standard colour with matte finish.
- Black oxide **steel boss** with standard H7 tolerance reamed holes.
- Self-adhesive, matte anodised **aluminium central plate** for fitting after handwheel assembly.
- Technopolymer **revolving handle** type 1.601+x (page 268).
- **Ergonomically shaped rim** for a safer and more comfortable grip.
- **Axial retaining washer** (on request) type GN 184 (page 452).

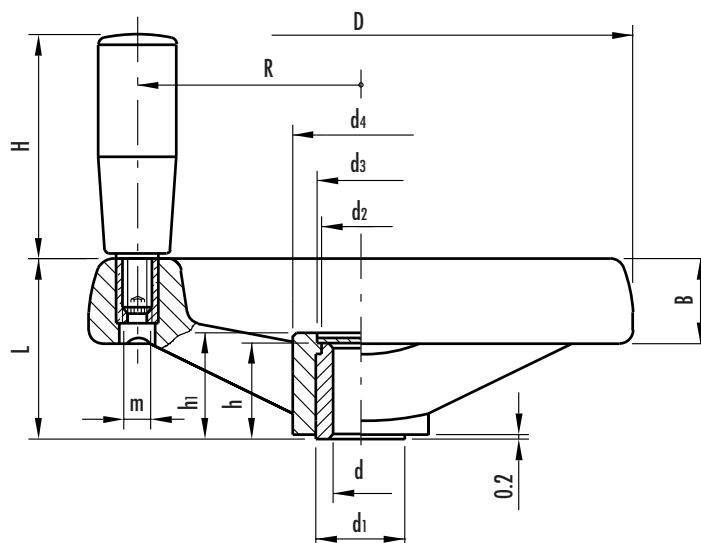


This product has been selected for its design by the international jury of "Die gute Industrieform-Hannover 1981"

design81



This product has been selected for its design by the international jury of "Design 1981-Stuttgart"



See Technical Data for maximum applicable torque (C) and impact strength (L).

Standard elements		Main dimensions								Bore		Handle			C	L	Weight
Code	Description	D	L	B	d1	d2	d3	d4	h1	d H7	h	H	m	R	[N•m]	[J]	grams
78421 78422	VRTP.80+I A-8 VRTP.80+I A-10	80	35	18	18	16	17	23	19	8 10	17	40	M6	29	32	5	104 100
78521 78522	VRTP.100+I A-10 VRTP.100+I A-12	99	37	20	18	16	17	25	19	10 12	17	56	M6	37	54	7	145 140
78621 78622	VRTP.125+I A-12 VRTP.125+I A-14	124	44	22	22	20	21	31	25	12 14	22	65	M8	48	94	10	245 240
78721 78722	VRTP.160+I A-14 VRTP.160+I A-16	160	51	25	26	24	25	40	29	14 16	27	65	M8	65	185	15	356 339
78821 78823	VRTP.200+I A-16 VRTP.200+I A-20	200	61	28	30	28	31	50	36	16 20	34	80	M8	84	300	24	552 525
78921 78923	VRTP.250+I A-20 VRTP.250+I A-24	249	70	32	35	33	34	59	40	20 24	38	90	M10	105	420	28	904 888
78958 78961	VRTP.300+I A-20 VRTP.300+I A-26	298	78	36	40	37	42	66	46	20 26	43	90	M10	127	480	36	1050 1111
79021	VRTP.375+I A-26	373	82	38	40	37	42	69	46	26	43	90	M10	162	480	40	1345