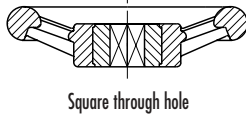


Three-spoke handwheels

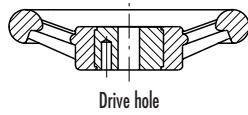
- **High strength, reinforced, phenolic-based (PF) Duroplast.**
Resistant to solvents, oils, greases and other chemical agents.
- **Black** standard colour with glossy finish.
- **Large diameter black oxide steel boss** with uncovered front end and blind hole.
- **Axial retaining washer** (on request) type GN 184 (page 452).



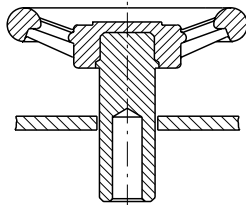
Special types and applications



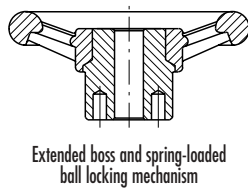
Square through hole



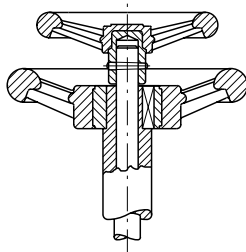
Drive hole



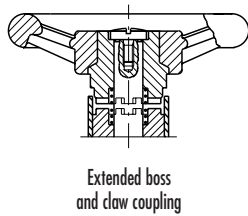
Extended boss for bulkhead assembly



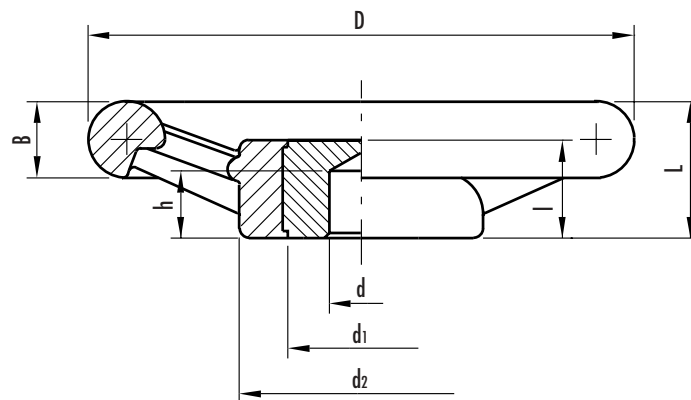
Extended boss and spring-loaded ball locking mechanism



Controlling coaxial shafts



Extended boss and claw coupling



See Technical Data for maximum applicable torque (C) and impact strength (L).

Standard elements		Main dimensions						Hole dimensions		C	L	Weight
Code	Description	D	L	B	d ₁	d ₂	l	d H9	h	[N•m]	[J]	grams
80001	VRU.125	125	28	18	32	55	22	10	15	220	9	315
80101	VRU.160	160	35	22	42	70	26	10	17	350	13	615
80201	VRU.200	199	40	26	53	85	27	12	20	450	20	990
80301	VRU.250	249	49	30	68	105	30	12	22	650	25	1770