

GN 115

Locks

- **Lock housing**

Chromium-plated zinc-pressure die cast.

- **Metal elements**

Zinc-plated steel.

- **Standard executions available**

- Execution **DK**: with triangular spindle.
- Execution **VK**: with square spindle.
- Execution **VDE**: with double bit.
- Execution **SG**: with DIN 6336 polyamide-based (PA) technopolymer star knob with tapped blind hole.
- Execution **SK**: with wrench.
- Execution **ST**: with T-handle.

- **Keys (to be ordered separately)**

Zinc-plated steel.

- GN 119.1-DK: for triangular spindle.
- GN 119.1-VK: for square spindle.
- GN 119.1-VDE: with double bit.

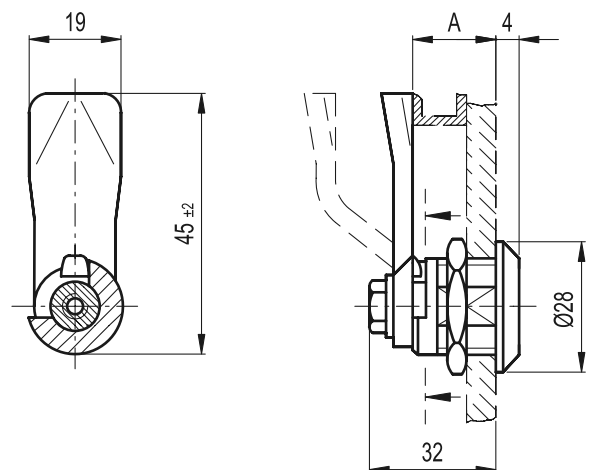


Assembly instructions

By turning the lock, by max 90°, the latch is moved behind the frame preventing the opening of the door or shutter. The latch is slightly included towards the outside. The sketch on the right shows the hole required through which the lock is installed. The mechanism is inserted through the hole from the front and the hexagon nut can be fitted from the back.

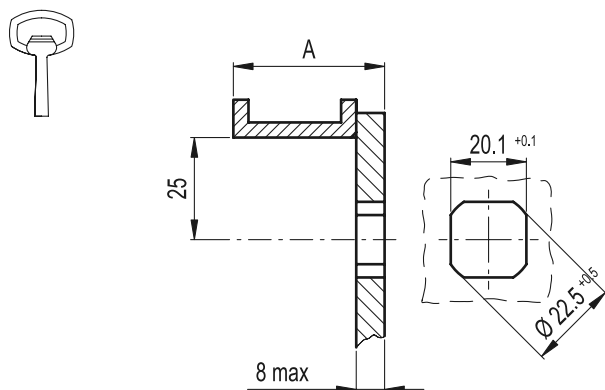
Features and applications

GN 115 locks are low cost. They offer a straightforward locking action rather than a locking and clamping action. The choice of 22 differently shaped catch plates gives a range A (see table on the following page) from 4 to 50 mm.

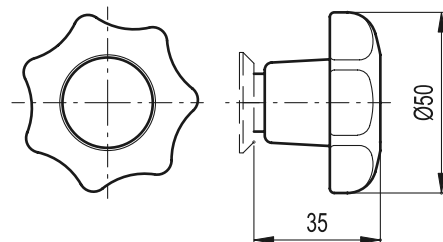


GN 119.1

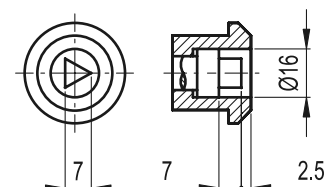
Mounting hole



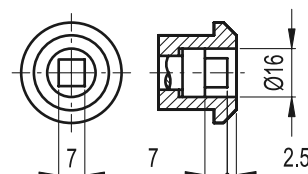
GN 115-SG



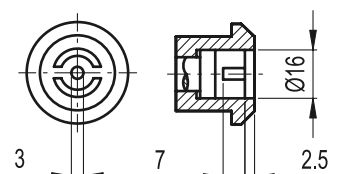
GN 115-DK

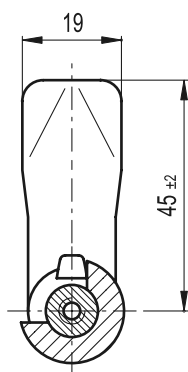


GN 115-VK

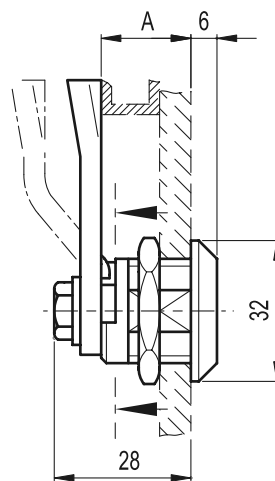


GN 115-VDE

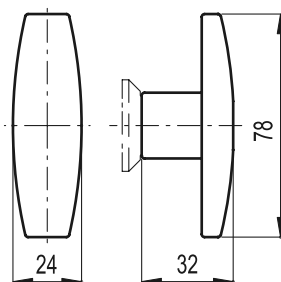
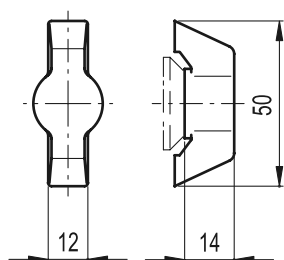




GN 115-SK



GN 115-ST



Standard Elements	Main dimension	Weight #
Description	A	g
GN 115*-4	4	50
GN 115*-6	6	80
GN 115*-8	8	80
GN 115*-10	10	130
GN 115*-13	13	130
GN 115*-14	14	130
GN 115*-16	16	130
GN 115*-18	18	130
GN 115*-20	20	130
GN 115*-22	22	130
GN 115*-24	24	130
GN 115*-26	26	130
GN 115*-28	28	130
GN 115*-30	30	130
GN 115*-32	32	135
GN 115*-34	34	135
GN 115*-36	36	135
GN 115*-38	38	135
GN 115*-40	40	140
GN 115*-42	42	140
GN 115*-45	45	140
GN 115*-50	50	145

*Complete the description of the standard item needed by adding SG (with star knob), DK (with triangular spindle), VK (with square spindle), VDE (with double bit).

#SG execution weight

Standard Elements	Main dimension	△△
Description	A	g
GN 115*-4	4	40
GN 115*-6	6	30
GN 115*-8	8	28
GN 115*-10	10	27
GN 115*-13	13	27
GN 115*-14	14	28
GN 115*-16	16	27
GN 115*-18	18	27
GN 115*-20	20	27
GN 115*-22	22	26
GN 115*-24	24	27
GN 115*-26	26	28
GN 115*-28	28	29
GN 115*-30	30	30
GN 115*-32	32	29
GN 115*-34	34	32
GN 115*-36	36	30
GN 115*-38	38	35
GN 115*-40	40	38
GN 115*-42	42	37
GN 115*-45	45	39
GN 115*-50	50	42

*Complete the description of the standard item needed by adding SK (with wrench), ST (with T-Handle).

GN 115-SC

Locks with key

- **Lock housing**

Chromium-plated zinc-pressure die cast.

- **Metal elements**

Zinc-plated steel.

- **Standard executions available**

- Execution **SC**: with key, lockable, always supplied with two keys.
- Execution **SCK**: with wrench and key.
- Execution **SCT**: with T-Handle and key.

Assembly instructions

By turning the lock, by max 90°, the latch is moved behind the frame preventing the opening of the door or shutter. The latch is slightly included towards the outside. The sketch on the right shows the hole required through which the lock is installed. The mechanism is inserted through the hole from the front and the hexagon nut can be fitted from the back.

Features and applications

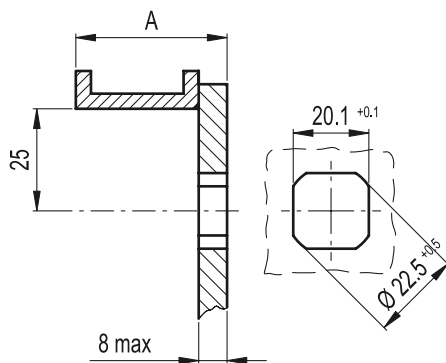
GN 115 locks are low cost. They offer a straightforward locking action rather than a locking and clamping action. The choice of 22 differently shaped catch plates gives a range A (see table the following page) from 4 to 50 mm. In standard form all locks can work with identical key.

Other executions available on request

Locks requiring different keys.



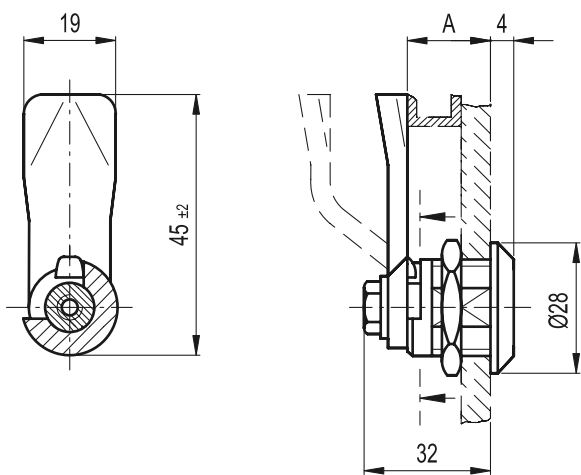
Mounting hole



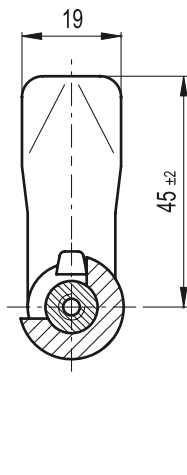
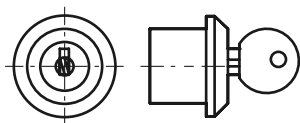
10

202

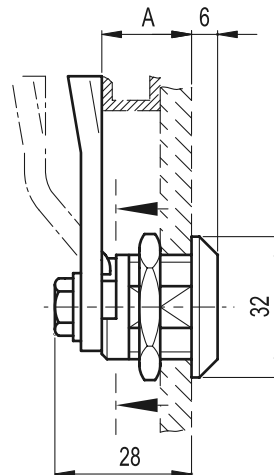
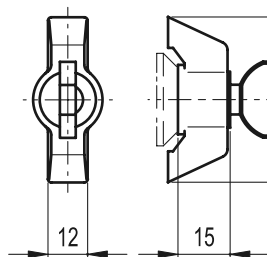
Technical components



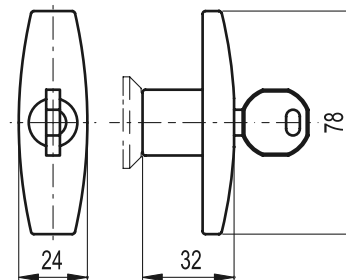
GN 115-SC



GN 115-SCK



GN 115-SCT



Standard Elements	Main dimension	\triangle
Description	A	g
GN 115-*-4	4	40
GN 115-*-6	6	30
GN 115-*-8	8	28
GN 115-*-10	10	27
GN 115-*-13	13	27
GN 115-*-14	14	28
GN 115-*-16	16	27
GN 115-*-18	18	27
GN 115-*-20	20	27
GN 115-*-22	22	26
GN 115-*-24	24	27
GN 115-*-26	26	28
GN 115-*-28	28	29
GN 115-*-30	30	30
GN 115-*-32	32	29
GN 115-*-34	34	32
GN 115-*-36	36	30
GN 115-*-38	38	35
GN 115-*-40	40	38
GN 115-*-42	42	37
GN 115-*-45	45	39
GN 115-*-50	50	42

*Complete the description of the standard item needed by adding SC (with key), SCK (with wrench and key), SCT (with T-Handle and key).