

Locks

- **Material**
AISI 303 stainless steel.
- **Lobe knob**
Type GN 5334: AISI 304 stainless steel.
- **Standard executions available**
 - Execution **SG**: with stainless steel lobe knob.
 - Execution **VK**: with square spindle.
 - Execution **DK**: with triangular spindle.
 - Execution **VDE**: with double bit.
- **Keys (to be ordered separately)**
Stainless steel.
 - GN 119.1-DK: for triangular spindle.
 - GN 119.1-VK: for square spindle.
 - GN 119.1-VDE: with double bit.



Assembly instructions

By turning the lock by max. 90°, the latch is moved behind the frame preventing the opening of the door or shutter. The latch is slightly included towards the outside. The sketch on the right shows the hole required through which the lock is installed. The mechanism is inserted through the hole from the front and the hexagon nut can be fitted from the back.

Features and applications

Stainless Steel-Locks GN 115-NI are low cost.

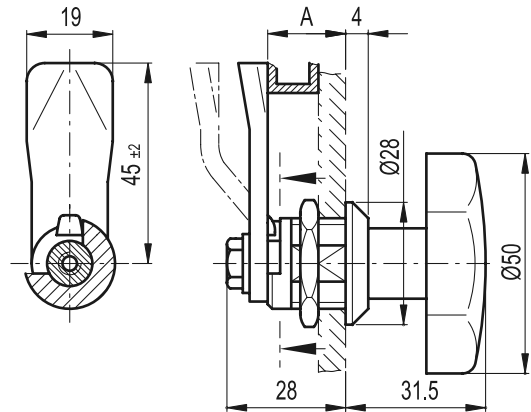
They offer a straightforward locking action rather than a locking and clamping action.

The choice of 9 differently shaped catch plates gives a range A of 6 to 28 mm.

10
200

Technical components

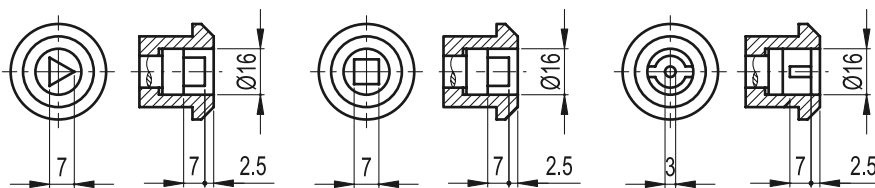
GN 115-SG



GN 115-DK

GN 115-VK

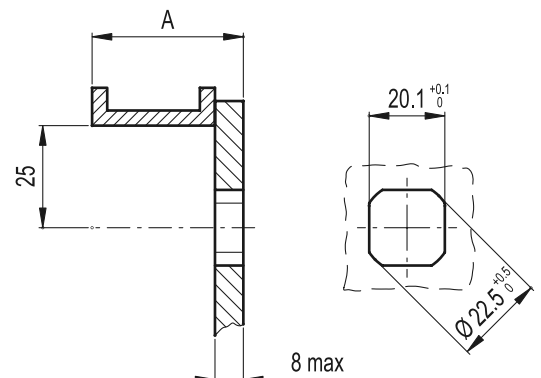
GN 115-VDE



Standard Elements	Main dimension	Weight #
Description	A	g
GN 115*-6-NI	6	80
GN 115*-10-NI	10	130
GN 115*-14-NI	14	130
GN 115*-18-NI	18	130
GN 115*-20-NI	20	130
GN 115*-22-NI	22	130
GN 115*-24-NI	24	130
GN 115*-26-NI	26	130
GN 115*-28-NI	28	130

Mounting hole

GN 119.1



*Complete the description of the standard item needed by adding SG (with star knob), DK (with triangular spindle), VK (with square spindle), VDE (with double bit).

#SG execution weight