

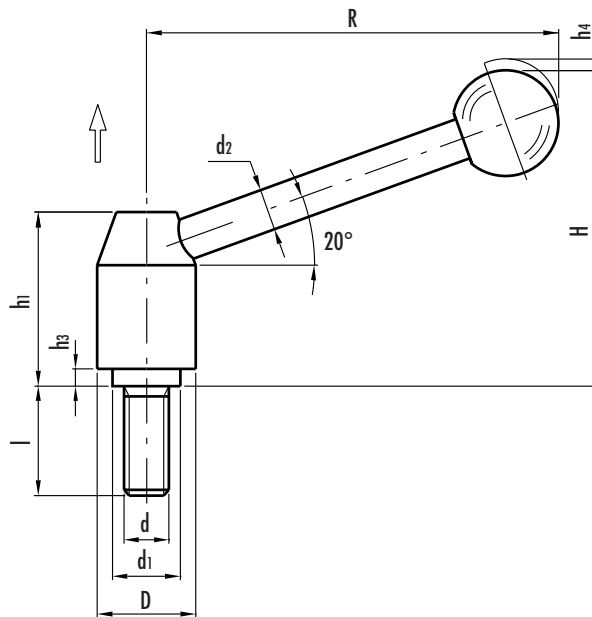


Adjustable handles with threaded stud

- **Matte shot-blasted AISI 303 stainless steel** body.
- **Matte shot-blasted AISI 303 stainless steel** arm inclined by a 20° angle (type E) with DIN 319 black phenolic based (PF) Duroplast ball knob.
- AISI 303 stainless steel threaded **stud**.
- Treated steel **spring**.

GN 212.5 adjustable handles are used for applications having a limited space or where a particular handle position is required. The threaded stud is connected to the handle via serrations and can be easily disengaged. By pulling the handle, the internal mechanism disengages the serrations and allows the handle to swivel to the ideal clamping position. By releasing the handle, the mechanism automatically re-engages serrations.

AISI 303 stainless steel makes these handles particularly suitable for applications on machines and equipment in the food, chemical or pharmaceutical industry and wherever hygienic or environmental factors make it mandatory the use of corrosion-resistant materials.



Standard elements	Main dimensions								Threaded stud		Weight
Description	D	R	H	h1	h3	h4	d1	d2	d 6g	h	grams
GN 212.5-21-M8-16-E	21	75	59	33.5	1	4	13.5	8	M8	16	104
GN 212.5-21-M8-20-E										20	105
GN 212.5-21-M8-25-E										25	107
GN 212.5-21-M8-32-E										32	109
GN 212.5-21-M8-40-E										40	112
GN 212.5-21-M8-50-E										50	114
GN 212.5-21-M8-63-E										63	119
GN 212.5-24-M10-20-E	24	101	75	40	2.5	4.5	16	10	M10	20	173
GN 212.5-24-M10-25-E										25	175
GN 212.5-24-M10-32-E										32	178
GN 212.5-24-M10-40-E										40	182
GN 212.5-24-M10-50-E										50	188
GN 212.5-24-M10-63-E										63	195
GN 212.5-24-M10-80-E										80	202
GN 212.5-28-M12-25-E	28	116	88	48.5	4.5	4.5	19	12	M12	25	295
GN 212.5-28-M12-32-E										32	300
GN 212.5-28-M12-40-E										40	305
GN 212.5-28-M12-50-E										50	312
GN 212.5-28-M12-63-E										63	322
GN 212.5-28-M12-80-E										80	333