

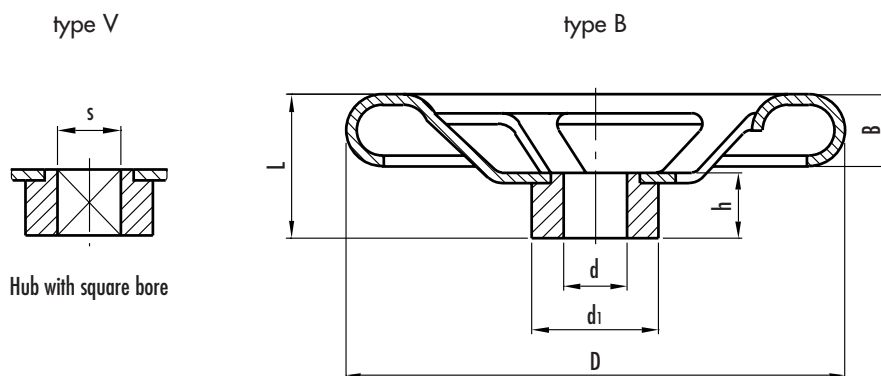
## Pressed steel spoked handwheels

- **AISI 304 pressed stainless steel** with sandblasted matte finish surfaces.
- **Welded hub** with:
  - B** = standard H9 tolerance plain bore
  - K** = standard H9 tolerance reamed bore with DIN 6885/1 P9 keyway (see table on page 669)
  - V** = H11 tolerance square bore.
- Axial and radial runout lower than IT 12.



Pressed steel handwheels GN 227.2 are renowned for their high mechanical strength and their resistance to shocks and knocks.

For fixing GN 227.2 on shafts by a grub screw see GN 110 drilling technical information on page 668.



Standard elements	Main dimensions				Bore				Spokes nr.	Thickness of pressed steel	Weight grams
	D	L	B	d1	d H9	s H11	h	Keyway			
GN 227.2-160-B12-A	160	39	22	30	12	-	20		4	2	430
GN 227.2-160-K12-A					12	-	20	•	2	425	
GN 227.2-160-V12-A					-	12	20		2	428	
GN 227.2-200-B14-A	200	44	22	40	14	-	24		4	2.5	824
GN 227.2-200-K14-A					14	-	24	•	2.5	824	
GN 227.2-200-V14-A					-	14	24		2.5	824	
GN 227.2-250-B17-A	250	52	30	45	17	-	28		5	3	1477
GN 227.2-250-K17-A					17	-	28	•	3	1465	
GN 227.2-250-V17-A					-	17	28		3	1465	

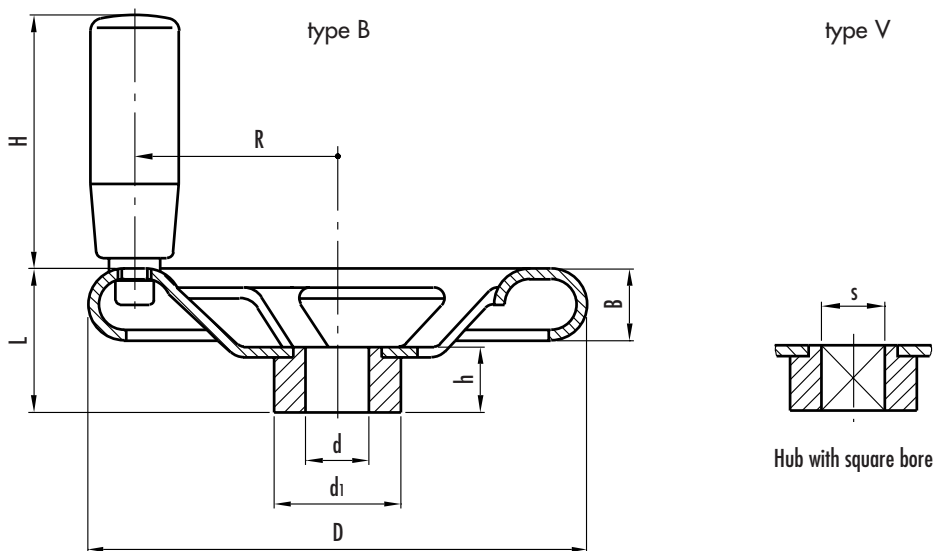


## Pressed steel spoked handwheels with revolving handle

- **AISI 304 pressed stainless steel** with sandblasted matte finish surfaces.
- **Welded hub** with:
  - B** = standard H9 tolerance plain bore
  - K** = standard H9 tolerance reamed bore with DIN 6885/1 P9 keyway (see table on page 669)
  - V** = H11 tolerance square bore.
- Black phenolic-based (PF) Duroplast **revolving handle**. Resistant to solvents, oils, greases and other chemical agents.
- Axial and radial runout lower than IT 12.

Pressed steel handwheels GN 227.2 are renowned for their high mechanical strength and their resistance to shocks and knocks.

For fixing GN 227.2 on shafts by a grub screw see GN 110 drilling technical information on page 668.



Standard elements	Main dimensions				Bore				Handle			Spokes	Thickness of pressed steel	Weight	
	D	L	B	d <sub>1</sub>	d H9	s H11	h	keyway	H	Ø	R				nr.
GN 227.2-160-B12-D	160	39	22	30	12	-	20	•	83	26	68	4	2	530	
GN 227.2-160-K12-D					12	-	20	•				4			528
GN 227.2-160-V12-D					-	12	20	-				4			528
GN 227.2-200-B14-D	200	44	22	40	14	-	24	•	83	26	88	4	2.5	924	
GN 227.2-200-K14-D					14	-	24	•				4	924		
GN 227.2-200-V14-D					-	14	24	-				4	924		
GN 227.2-250-B17-D	250	52	30	45	17	-	28	•	93	28	108	5	3	1565	
GN 227.2-250-K17-D					17	-	28	•				5	1565		
GN 227.2-250-V17-D					-	17	28	-				5	1565		