

Adjustable handles

- **Lever body**

Stainless steel, sandblasted matte finish.

- **Clamping element**

AISI 303 stainless steel with threaded hole and toothed element for coupling to the lever body, stainless steel screw and return spring.

Features and applications

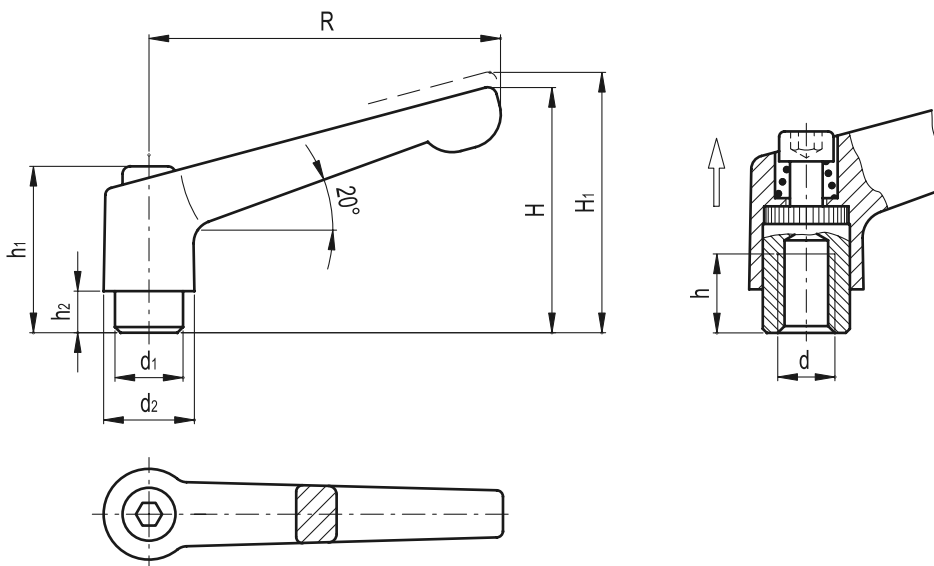
Particularly suitable when the lever turning angle is limited owing to lack of space.

Stainless steel, thanks to its high resistance to corrosion, allows the application of these adjustable handles on machines and equipment in those sectors where laws or particular hygienic, climatic and environmental factors make it mandatory to use corrosion resistant materials.

Instructions of use

For clamping, lift the lever to disengage the clamping device tooting and bring it back to start position. By releasing the lever, the return spring automatically engages the tooting.

If the lever cannot make a 360° rotation, the clamping element can be easily screwed by means of the hexagon socket front head screw (after having disengaged the lever).



Standard Elements	Main dimensions							Mounting hole		△△
Description	R	H	H1	h1	h2	d1	d2	d	h	g
GN 300.5-45-M5	45	35	38.5	24.5	4	10	13	M5	9	40
GN 300.5-45-M6	45	35	38.5	24.5	4	10	13	M6	9	39
GN 300.5-63-M6	63	45	49	31	6.5	13.5	17.5	M6	11	90
GN 300.5-63-M8	63	45	49	31	6.5	13.5	17.5	M8	11	88
GN 300.5-78-M8	78	55	59	36	8	16	21	M8	14	147
GN 300.5-78-M10	78	55	59	36	8	16	21	M10	14	143



Adjustable handles

- **Lever body**
Stainless steel, sandblasted matte finish.
- **Clamping element**
AISI 303 stainless steel threaded stud with toothed element for coupling to the lever body, stainless steel screw and return spring.

Features and applications

Particularly suitable when the lever turning angle is limited owing to lack of space.

Stainless steel, thanks to its high resistance to corrosion, allows the application of these adjustable handles on machines and equipment in those sectors where laws or particular hygienic, climatic and environmental factors make it mandatory to use corrosion resistant materials.

Instructions of use

For clamping, lift the lever to disengage the clamping device tooting and bring it back to start position. By releasing the lever, the return spring automatically engages the tooting.

If the lever cannot make a 360° rotation, the clamping element can be easily screwed by means of the hexagon socket front head screw (after having disengaged the lever).



Standard Elements	Main dimensions							Thread		\triangle
Description	R	H	H ₁	h ₁	h ₂	d ₁	d ₂	d	l	g
GN 300.5-45-M5-12	45	35	38.5	24.5	4	10	13	M5	12	41
GN 300.5-45-M5-16	45	35	38.5	24.5	4	10	13	M5	16	42
GN 300.5-45-M5-20	45	35	38.5	24.5	4	10	13	M5	20	43
GN 300.5-45-M5-25	45	35	38.5	24.5	4	10	13	M5	25	43
GN 300.5-45-M5-32	45	35	38.5	24.5	4	10	13	M5	32	44
GN 300.5-45-M5-40	45	35	38.5	24.5	4	10	13	M5	40	45
GN 300.5-45-M5-50	45	35	38.5	24.5	4	10	13	M5	50	49
GN 300.5-45-M6-12	45	35	38.5	24.5	4	10	13	M6	12	42
GN 300.5-45-M6-16	45	35	38.5	24.5	4	10	13	M6	16	43
GN 300.5-45-M6-20	45	35	38.5	24.5	4	10	13	M6	20	43
GN 300.5-45-M6-25	45	35	38.5	24.5	4	10	13	M6	25	44
GN 300.5-45-M6-32	45	35	38.5	24.5	4	10	13	M6	32	46
GN 300.5-45-M6-40	45	35	38.5	24.5	4	10	13	M6	40	47
GN 300.5-45-M6-50	45	35	38.5	24.5	4	10	13	M6	50	47
GN 300.5-63-M6-16	63	45	49	31	6.5	13.5	17.5	M6	16	94
GN 300.5-63-M6-20	63	45	49	31	6.5	13.5	17.5	M6	20	95
GN 300.5-63-M6-25	63	45	49	31	6.5	13.5	17.5	M6	25	96
GN 300.5-63-M6-32	63	45	49	31	6.5	13.5	17.5	M6	32	97
GN 300.5-63-M6-40	63	45	49	31	6.5	13.5	17.5	M6	40	99
GN 300.5-63-M6-50	63	45	49	31	6.5	13.5	17.5	M6	50	100
GN 300.5-63-M6-63	63	45	49	31	6.5	13.5	17.5	M6	63	102
GN 300.5-63-M8-16	63	45	49	31	6.5	13.5	17.5	M8	16	97
GN 300.5-63-M8-20	63	45	49	31	6.5	13.5	17.5	M8	20	98
GN 300.5-63-M8-25	63	45	49	31	6.5	13.5	17.5	M8	25	100
GN 300.5-63-M8-32	63	45	49	31	6.5	13.5	17.5	M8	32	102
GN 300.5-63-M8-40	63	45	49	31	6.5	13.5	17.5	M8	40	105
GN 300.5-63-M8-50	63	45	49	31	6.5	13.5	17.5	M8	50	107
GN 300.5-63-M8-63	63	45	49	31	6.5	13.5	17.5	M8	63	112
GN 300.5-78-M10-20	78	55	59	36	8	16	21	M10	20	163
GN 300.5-78-M10-25	78	55	59	36	8	16	21	M10	25	165
GN 300.5-78-M10-32	78	55	59	36	8	16	21	M10	32	166
GN 300.5-78-M10-40	78	55	59	36	8	16	21	M10	40	170
GN 300.5-78-M10-50	78	55	59	36	8	16	21	M10	50	176
GN 300.5-78-M10-63	78	55	59	36	8	16	21	M10	63	183
GN 300.5-78-M10-80	78	55	59	36	8	16	21	M10	80	190