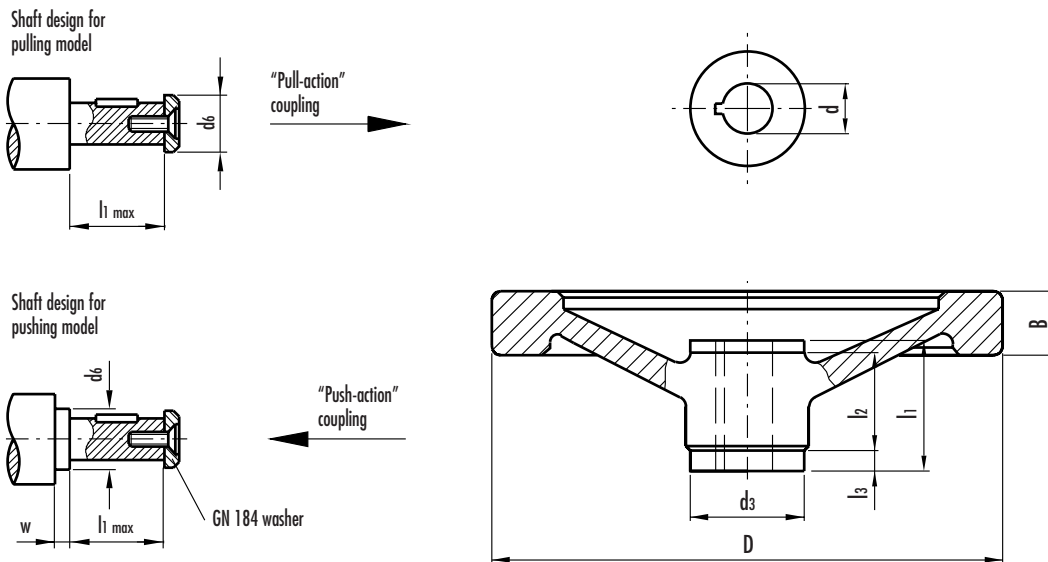


GN 321.5

Solid safety handwheels

- **Cast aluminium.**
- **Turned and mirror-polished rim.** The other surfaces are matte finish fine sandblasted.
- **Hub** with DIN 6885/2 P9 keyway (see table on page 669).
- Hardened steel GN 000.5 **safety coupling bushing** with needle bearings with engagement system by pulling (type ZI) or by pushing (type DR).
- **Axial retaining washer** (on request) type GN 184 (page 452).
- Axial and radial runout lower than IT 12.

For fixing GN 321.5 on shafts by a grub screw see GN 110 drilling technical information on page 668.

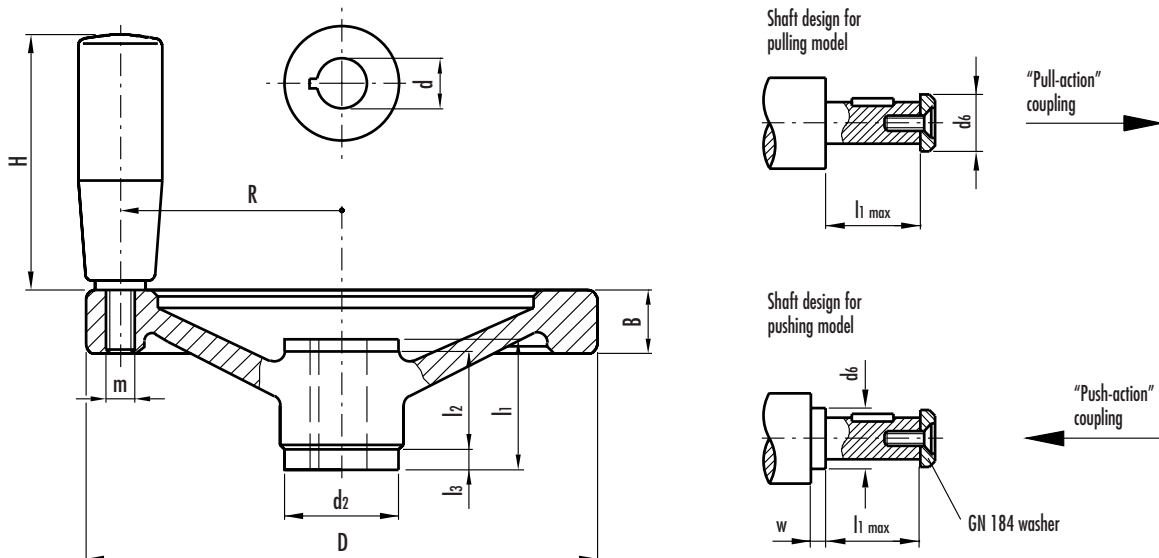


Standard elements	Main dimensions									Mounting hole d H7	Weight grams
	D	B	d3	d6 max.	l1	l2	l3	w min.	Safety coupling bushing GN 000.5		
GN 321.5-125-K12-A-DR GN 321.5-125-K12-A-ZI	125	15	28	17	42	18	12	4	Gr.1	12	423 423
GN 321.5-140-K12-A-DR GN 321.5-140-K12-A-ZI	140	16.5	28	17	42	18	12	4	Gr.1	12	512 512
GN 321.5-140-K14-A-DR GN 321.5-140-K14-A-ZI	140	16.5	32	21	48	20	14	4	Gr.2	14	592 592
GN 321.5-160-K14-A-DR GN 321.5-160-K14-A-ZI	160	18	32	21	48	20	14	4	Gr.2	14	715 715
GN 321.5-200-K18-A-DR GN 321.5-200-K18-A-ZI	200	20.5	38	26	50	24	13	4	Gr.3	18	1127 1127
GN 321.5-250-K22-A-DR GN 321.5-250-K22-A-ZI	250	23	45	30	54	28	13	4	Gr.4	22	1840 1840

Solid safety handwheels with revolving handle

- **Cast aluminium.**
- **Turned and mirror polished rim.** The other surfaces are matte finish fine sandblasted.
- **Hub** with DIN 6885/2 P9 keyway (see table on page 669).
- Hardened steel GN 000.5 **safety coupling bushing** with needle bearings with engagement system by pulling (type ZI) or by pushing (type DR).
- GN 598 steel **revolving handle** with black epoxy resin coating (see page 270).
- **Axial retaining washer** (on request) type GN 184 (page 452).
- Axial and radial runout lower than IT 12.

For fixing GN 321.5 on shafts by a grub screw see GN 110 drilling technical information on page 668.



Standard elements	Main dimensions									Mounting hole d H7	Handle				Weight grams
	D	B	d2	d6 max.	l1	l2	l3	w min.	Safety coupling bushing GN 000.5		H	Ø	m	R	
GN 321.5-125-K12-D-DR GN 321.5-125-K12-D-ZI	125	15	28	17	42	18	12	4	Gr.1	12	67.5	23	M8	54	562 562
GN 321.5-140-K12-D-DR GN 321.5-140-K12-D-ZI	140	16.5	28	17	42	18	12	4	Gr.1	12	67.5	23	M8	61	651 651
GN 321.5-140-K14-D-DR GN 321.5-140-K14-D-ZI	140	16.5	32	21	48	20	14	4	Gr.2	14	67.5	23	M8	61	706 706
GN 321.5-160-K14-D-DR GN 321.5-160-K14-D-ZI	160	18	32	21	48	20	14	4	Gr.2	14	82.5	26	M10	71	937 937
GN 321.5-200-K18-D-DR GN 321.5-200-K18-D-ZI	200	20.5	38	26	50	24	13	4	Gr.3	18	82.5	26	M10	89	1335 1335
GN 321.5-250-K22-D-DR GN 321.5-250-K22-D-ZI	250	23	45	30	54	28	13	4	Gr.4	22	92.5	28	M10	113	1916 1916