

GN 322

Two-spoke handwheels

- **Cast aluminium.**
- **Turned and mirror-polished rim.** The other surfaces are matte finish fine sandblasted.
- **Hub** with:
 - B** = standard H7 tolerance plain bore
 - K** = standard H7 tolerance reamed bore with DIN 6885/1 P9 keyway (see table on page 669).
- **Axial retaining washer** (on request) type GN 184 (page 452).
- Axial and radial runout lower than IT 12.



GN 322 two-spoke handwheels are available with GN 000.4 or GN 000.5 safety coupling bushings already assembled (GN 000.4, GN 000.5 see page 90-91).

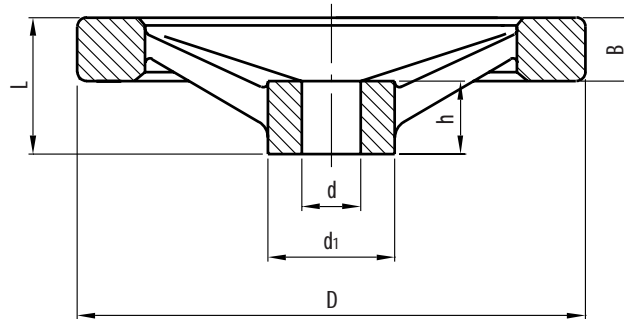
For fixing GN 322 on shafts by a grub screw see GN 110 drilling technical information on page 668.



This product has been selected for its design by the international jury of "Die gute Industrieform-Hannover 1980"



This product has been selected for its design by the international jury of "Design 1980-Stuttgart"



Standard elements	Main dimensions				Bore			Weight
Description	D	L	B	d1	d H7	h	keyway	grams
GN 322-125-B12-A	125	33	15	31	12	18	•	311
GN 322-125-B14-A					14			
GN 322-125-K12-A					12			
GN 322-125-K14-A					14			
GN 322-140-B14-A	140	36	16.5	36	14	19	•	411
GN 322-140-B16-A					16			
GN 322-140-K14-A					14			
GN 322-140-K16-A					16			
GN 322-160-B14-A	160	38	18	36	14	20	•	539
GN 322-160-B16-A					16			
GN 322-160-K14-A					14			
GN 322-160-K16-A					16			
GN 322-200-B18-A	200	45	20.5	42	18	24	•	892
GN 322-200-B20-A					20			
GN 322-200-K18-A					18			
GN 322-200-K20-A					20			
GN 322-250-B22-A	250	51	23	48	22	28	•	1478
GN 322-250-B26-A					26			
GN 322-250-K22-A					22			
GN 322-250-K26-A					26			

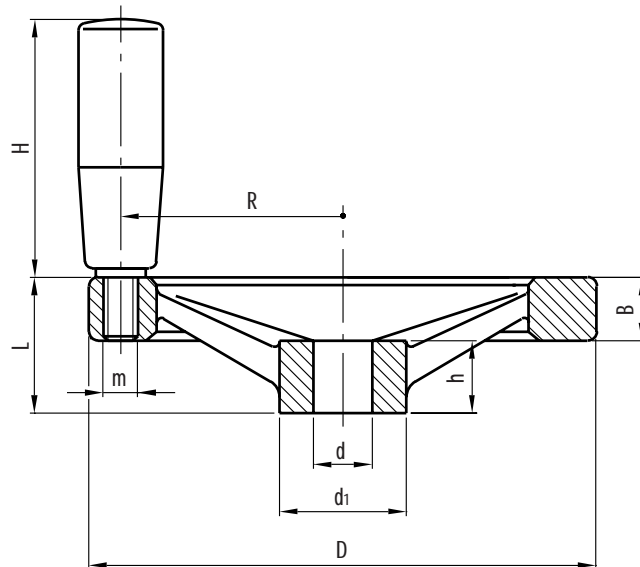


Two-spoke handwheels with revolving handle

- **Cast aluminium.**
- **Turned and mirror-polished rim.** The other surfaces are matte finish fine sandblasted.
- **Hub with:**
 - B** = standard H7 tolerance plain bore
 - K** = standard H7 tolerance reamed bore with DIN 6885/1 P9 keyway (see table on page 669).
- **Axial retaining washer** (on request) type GN 184 (page 452).
- Axial and radial runout lower than IT 12.
- Black phenolic-based (PF) Duroplast **revolving handle.** Resistant to solvents, oils, greases and other chemical agents.

GN 322 two-spoke handwheels are available with GN 000.4 or GN 000.5 safety coupling bushings already assembled (GN 000.4, GN 000.5 see page 90-91).

For fixing GN 322 on shafts by a grub screw see GN 110 drilling technical information on page 668.



This product has been selected for its design by the international jury of "Die gute Industrieform-Hannover 1980"



This product has been selected for its design by the international jury of "Design 1980-Stuttgart"

Standard elements	Main dimensions				Bore			Handle				Weight
Description	D	L	B	d1	d H7	h	keyway	H	Ø	m	R	grams
GN 322-125-B12-D	125	33	15	31	12	18	.	67.5	23	M8	54	383
GN 322-125-B14-D					14							386
GN 322-125-K12-D					12							381
GN 322-125-K14-D					14							384
GN 322-140-B14-D	140	36	16.5	36	14	19	.	67.5	23	M8	61	486
GN 322-140-B16-D					16							469
GN 322-140-K14-D					14							484
GN 322-140-K16-D					16							467
GN 322-160-B14-D	160	38	18	36	14	20	.	82.5	26	M10	71	643
GN 322-160-B16-D					16							634
GN 322-160-K14-D					14							640
GN 322-160-K16-D					16							631
GN 322-200-B18-D	200	45	20.5	42	18	24	.	82.5	26	M10	89	996
GN 322-200-B20-D					20							989
GN 322-200-K18-D					18							985
GN 322-200-K20-D					20							992
GN 322-250-B22-D	250	51	23	48	22	28	.	92.5	28	M10	113	1598
GN 322-250-B26-D					26							1574
GN 322-250-K22-D					22							1593
GN 322-250-K26-D					26							1568