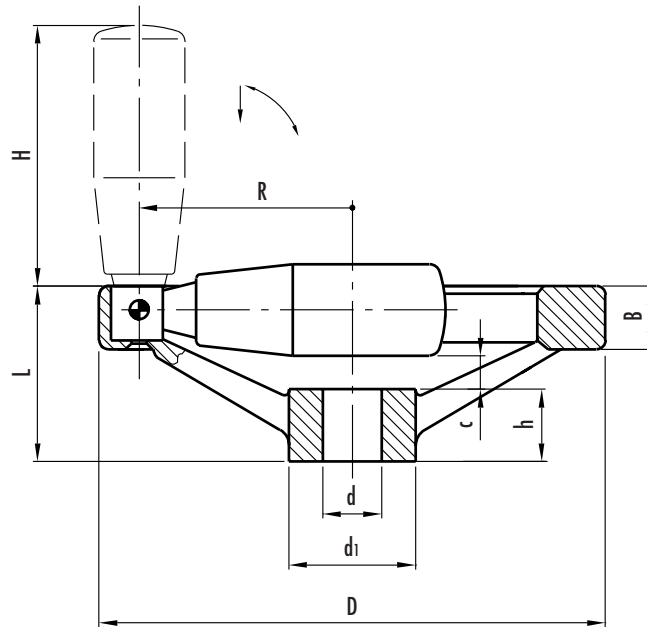


## Two-spoke handwheels with safety fold-away handle

- **Cast aluminium.**
- **Turned and mirror-polished rim.** The other surfaces are matte finish fine sandblasted.
- **Hub** with:
  - B** = standard H7 tolerance plain bore
  - K** = standard H7 tolerance reamed bore with DIN 6885/1 P9 keyway (see table on page 669).
- **Axial retaining washer** (on request) type GN 184 (page 452).
- Axial and radial runout lower than IT 12.
- GN 598.7 phenolic-based (PF) black Duroplast **safety fold-away handle** (type KU - see page 278).  
Resistant to solvents, oils, greases and other chemical agents.

For fixing GN 322.7 on shafts by a grub screw see GN 110 drilling technical information on page 668.



Standard elements	Main dimensions					Bore			Handle			Weight grams
	Description	D	L	B	d1	c	d H7	h	keyway	H	Ø	
GN 322.7-125-B12-D GN 322.7-125-K12-D	125	44	24.5	31	6.5	12	18	•	65	23	50	456 454
GN 322.7-140-B14-D GN 322.7-140-K14-D	140	45.5	24.5	36	7	14	19	•	65	23	57.5	540 538
GN 322.7-160-B14-D GN 322.7-160-K14-D	160	47	25	36	6	14	20	•	80	26	67.5	671 669
GN 322.7-160-B16-D GN 322.7-160-K16-D	160	47	25	36	6	16	20	•	80	26	67.5	667 665
GN 322.7-200-B18-D GN 322.7-200-K18-D	200	52.5	25	42	7.5	18	24	•	80	26	84	952 949
GN 322.7-200-B20-D GN 322.7-200-K20-D	200	52.5	25	42	7.5	20	24	•	80	26	84	947 944
GN 322.7-250-B22-D GN 322.7-250-K22-D	250	61	26.5	48	12	22	28	•	80	26	111	1362 1358