

GN 340 GN 340.5

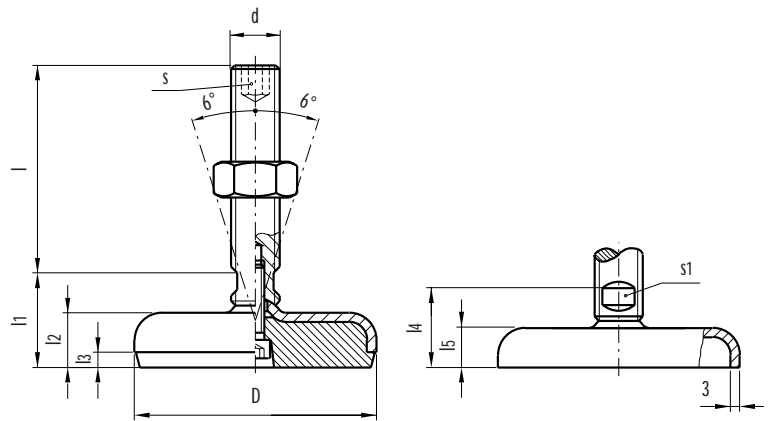
INOX
Stainless
Steel

Levelling elements

- **GN 340:** zinc-plated steel base and stem.
- **GN 340.5:** matte shot-blasted AISI 304 stainless steel base and stem.
- Steel nut (for GN 340) and **AISI 304 stainless steel** nut (for GN 340.5).
- Black **NBR rubber (PERBUNAN)** underlay, hardness from 80 to 85 shore.
- Loctited assembly screw.
- GN 340 and GN 340.5 levelling elements can be provided in different executions:
 - **type A:** without nut and without rubber underlay
 - **type B:** with nut and without rubber underlay
 - **type AG:** without nut and with rubber underlay
 - **type BG:** with nut and with rubber underlay.

A particular characteristic of GN 340 and GN 340.5 levelling elements (types AG and BG) is the solid rubber underlay being firmly embedded in the sheet metal base and additionally fixed by a loctited screw. Types without rubber underlay (A and B) offer low price alternatives for minor applications. The stem can be adjusted in two positions: either from the hexagon of the upper end and or from the spanner flats at the lower end.

The load values reported in the table are based on a series of tests where a vertical load is applied to the horizontal plane of the foot. If these values are exceeded a deformation of the foot can occur first on the metal sheet (3 mm) and eventually on the rubber material.



Static load [N]*

D	GN 340		GN 340.5	
	with rubber	without rubber	with rubber	without rubber
50	14000	18000	26000	30000
60	12000	15000	25000	28000
80	11000	13000	16000	19000
100	7000	11000	15000	18000

10
522

Technical components

Standard elements		Main dimensions							Threaded stem		Wrench		Weight *
Zinc-plated steel ▲	AISI 304 stainless steel ▲	D	l1	l2	l3	l4	l5	d 6g	l	s	s1	grams	
GN 340-50-M16-75- GN 340-50-M16-100- GN 340-50-M16-125- GN 340-50-M16-150-	GN 340.5-50-M16-75- GN 340.5-50-M16-100- GN 340.5-50-M16-125- GN 340.5-50-M16-150-	50	29	14.5	3.5	25.5	11	M16	75 100 125 150	8	12	232 268 304 341	
GN 340-60-M16-75- GN 340-60-M16-100- GN 340-60-M16-125- GN 340-60-M16-150-	GN 340.5-60-M16-75- GN 340.5-60-M16-100- GN 340.5-60-M16-125- GN 340.5-60-M16-150-	60	30	16	4	26	12	M16	75 100 125 150	8	12	282 317 353 389	
GN 340-80-M16-75- GN 340-80-M16-100- GN 340-80-M16-125- GN 340-80-M16-150-	GN 340.5-80-M16-75- GN 340.5-80-M16-100- GN 340.5-80-M16-125- GN 340.5-80-M16-150-	80	32	18	5	27	13	M16	75 100 125 150	8	12	365 431 467 503	
GN 340-80-M20-75- GN 340-80-M20-100- GN 340-80-M20-125- GN 340-80-M20-150-	GN 340.5-80-M20-75- GN 340.5-80-M20-100- GN 340.5-80-M20-125- GN 340.5-80-M20-150-	80	33	18	5	28	13	M20	75 100 125 150	10	15	485 541 597 653	
GN 340-80-M24-100- GN 340-80-M24-125- GN 340-80-M24-150-	GN 340.5-80-M24-100- GN 340.5-80-M24-125- GN 340.5-80-M24-150-	80	36	18	5	31	13	M24	100 125 150	12	19	700 784 865	
GN 340-100-M16-75- GN 340-100-M16-100- GN 340-100-M16-125- GN 340-100-M16-150-	GN 340.5-100-M16-75- GN 340.5-100-M16-100- GN 340.5-100-M16-125- GN 340.5-100-M16-150-	100	34	20	6	28	14	M16	75 100 125 150	8	12	502 568 605 641	
GN 340-100-M20-75- GN 340-100-M20-100- GN 340-100-M20-125- GN 340-100-M20-150-	GN 340.5-100-M20-75- GN 340.5-100-M20-100- GN 340.5-100-M20-125- GN 340.5-100-M20-150-	100	35	20	6	29	14	M20	75 100 125 150	10	15	622 678 734 790	
GN 340-100-M24-100- GN 340-100-M24-125- GN 340-100-M24-150-	GN 340.5-100-M24-100- GN 340.5-100-M24-125- GN 340.5-100-M24-150-	100	38	20	6	32	14	M24	100 125 150	12	19	839 921 1003	

▲ Complete the description of the standard item needed adding A (execution without nut, without rubber underlay), B (execution with nut, without rubber underlay), AG (execution without nut, with rubber underlay) or BG (execution with nut, with rubber underlay).

* The weight values reported in the table refer to the heaviest execution (GN 340.5-BG).