

GN 471 GN 471.1



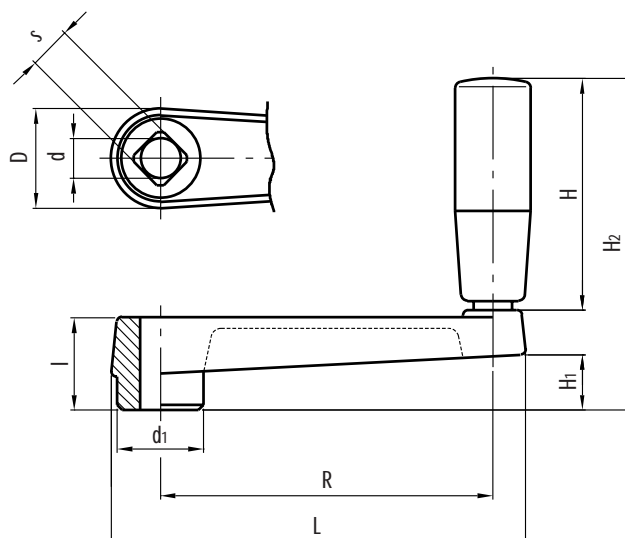
Crank handles

- **Cast aluminium** body with RAL 9005 black epoxy resin coating with matte finish (type GN 471).
- **Zinc die cast** body with RAL 9005 black epoxy resin coating with matte finish (type GN 471.1).
- **Hub** with:
 - B** = plain bore standard H7 tolerance
 - V** = H11 tolerance square bore.
- Black polyamide based (PA) technopolymer **revolving handle**. Resistant to solvents, oils, greases and other chemical agents.

For fixing GN 471 and GN 471.1 on shafts by a grub screw see GN 110 drilling technical information on page 668.



This product has been selected for its design by the international jury of "Die gute Industrieform-Hannover 1980"



Standard elements	Main dimensions					Mounting hole			Handle			Weight
	L	D	d1	H1	H2	d H7	s H11	l	H	Ø	R	grams
GN 471-80-B10 GN 471-80-V10	102	26	23	14	80.5	10 -	- 10	24 24	52.5	21	80	101 98
GN 471-100-B12 GN 471-100-V12	125	30	27	17	99.5	12 -	- 12	28 28	67.5	23	100	170 167
GN 471-125-B14 GN 471-125-V14	154	35	32	22	122.5	14 -	- 14	34 34	82.5	26	125	255 251
GN 471-160-B17 GN 471-160-V17	191	39	35	26	126.5	17 -	- 17	38 38	82.5	26	160	319 313
GN 471.1-50-B8 GN 471.1-50-V8	65	18	16	10	48.5	8 -	- 8	18 8	28.5	14	50	60 58
GN 471.1-64-B10 GN 471.1-64-V10	82	22	19	11	65.5	10 -	- 10	20 10	42.5	18	64	100 97
GN 471.1-80-B10 GN 471.1-80-V10	101	26	23	14	80.5	10 -	- 10	24 10	52.5	21	80	101 98
GN 471.1-100-B12 GN 471.1-100-V12	124	30	27	17	99.5	12 -	- 12	28 12	67.5	23	100	170 167