

Crank handles with fold-away handle



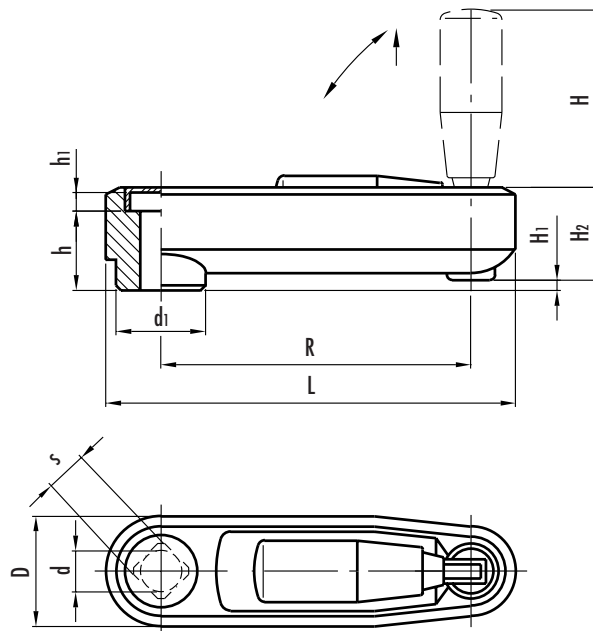
- **Cast aluminium** coated with matte finish RAL 9005 black epoxy resin.
- **Hub** with:
 - B** = standard H7 tolerance plain bore
 - V** = H11 tolerance square bore.
- Light grey acetal resin based (POM) technopolymer **hub cap**.
- GN 598.3 black phenolic based (PF) Duroplast **fold-away handle** (type KU - see page 280). Resistant to solvents, oils, greases and other chemical agents.

For fixing GN 472.3 on shafts by a grub screw see GN 110 drilling technical information on page 668.



This product has been selected for its design by the international jury of "Die gute Industrieform-Hannover 1992"

1
101
Operating elements



Standard elements	Main dimensions						Mounting hole			Handle			Weight
	L	D	d1	h1	H1	H2	d H7	s H11	h	H	Ø	R	grams
GN 472.3-80-B10 GN 472.3-80-V10	107	29	23	4.3	2.5	26	10 -	- 10	20	40	18	80	145 142
GN 472.3-100-B12 GN 472.3-100-V12	131	34	26	4.2	4	30	12 -	- 12	24	54	22	100	213 210
GN 472.3-125-B14 GN 472.3-125-V14	158	36	28	4.2	9	37	14 -	- 14	31	68	23	125	305 301