

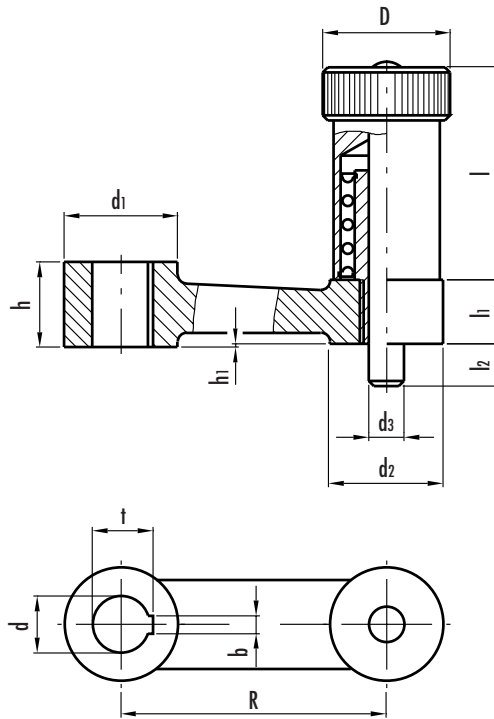
## Indexing control levers

- Sand-blasted and **deburred nodular cast iron**, matte finish.
- **Hub** with:
  - **B** standard H7 tolerance plain bore
  - **K** standard H7 tolerance reamed bore with DIN 6885/1 P9 keyway (see table on page 669).
- Black oxide cylindrical **handle**.
- Hardened steel **pin**.

GN 558 indexing control levers are normally used for rotating or positioning shafts.

They can also be supplied not assembled.

In this case, the holes for the pin can be made directly by the handle itself.



Standard elements	Main dimensions									Mounting hole				Weight grams
	R	D	h <sub>1</sub>	d <sub>1</sub>	d <sub>2</sub>	d <sub>3</sub> <sup>-0.02/-0.04</sup>	l	l <sub>1</sub>	l <sub>2</sub>	d H7	b P9	t	h	
GN 558-75-B16 GN 558-75-K16	75	32	1	32	28	10	60	18	12	16 16	- 5	- 17.3	24 24	544 537
GN 558-90-B18 GN 558-90-K18	90	32	1	34	28	10	60	18	12	18 18	- 6	- 19.7	26 26	588 583
GN 558-110-B20 GN 558-110-K20	110	32	1	36	28	10	60	18	12	20 20	- 6	- 21.7	30 30	694 689
GN 558-135-B22 GN 558-135-K22	135	32	1	42	28	10	60	18	12	22 22	- 6	- 23.7	32 32	823 818
GN 558-165-B24 GN 558-165-K24	165	32	1	44	28	10	60	18	12	24 24	- 8	- 25.7	36 36	994 988